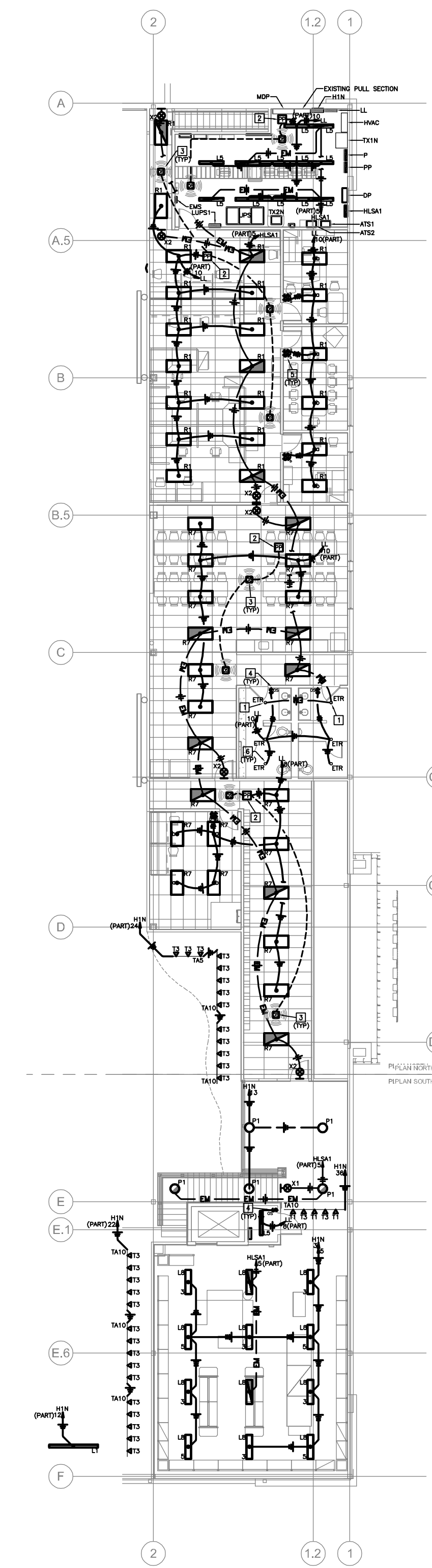


1 ELECTRICAL LIGHTING
 PLAN - OVERALL PLAN
 SCALE: 1/16"=1'-0"



2 ELECTRICAL LIGHTING
 MEZZANINE PLAN
 SCALE: 1/16"=1'-0"

GENERAL NOTES:

1. THESE GENERAL NOTES SHALL APPLY TO ALL ELECTRICAL DRAWINGS CONTAINED WITHIN THE SET OF DRAWINGS.
2. THE CONTRACTOR SHALL READ AND UNDERSTAND THE SPECIFICATIONS AND DRAWINGS OF ALL DIVISIONS OF WORK AND IS RESPONSIBLE FOR THE COORDINATION OF THIS WORK IN THEIR RELATED FIELD. THE FAILURE TO ACCOUNT ONES SELF WITH THE SPECIFICATIONS AND DRAWINGS DOES NOT RELIEVE THE RESPONSIBILITY OF PERFORMING THEIR WORK PROPERLY. NO ADDITIONAL COMPENSATION SHALL BE ALLOWED BECAUSE OF CONDITIONS THAT OCCUR DUE TO FAILURE TO FAMILIARIZE WORKERS WITH THE SPECIFICATIONS AND DRAWINGS.
3. FURNISH AND INSTALL ALL MATERIALS REQUIRED FOR A COMPLETE INSTALLATION IN ALL RESPECTS READY FOR INTENDED USE AND IN STRICT ACCORDANCE WITH NEC, STATE AND LOCAL CODES, AND MANUFACTURER'S RECOMMENDATIONS. CONTRACTOR SHALL PAY FOR ALL NECESSARY FEES AND PERMITS.
4. ALL LIGHTING CIRCUITS DESIGNATED AS EMERGENCY "EM" SHALL BE ROUTED THROUGH THE LIFE SAFETY PANEL AS DESIGNATED. ALL EM LIGHTING SHALL BE ALWAYS ON AS NIGHT LIGHTS. PROVIDE ALL LIFE SAFETY LIGHTING CIRCUITS IN SEPARATE CONDUITS THAN NORMAL POWER AND DESIGNATE LIFE SAFETY CONDUITS AS EMERGENCY PER NEC CODE.
5. CONTRACTOR SHALL PROVIDE COMPLETE TYPEWRITTEN PANELBOARD IDENTIFICATION SCHEDULES FOR TENANT SPACE PANELBOARDS.
6. PROVIDE GREEN INSULATED GROUND IN ALL LINE VOLTAGE CIRCUITS.
7. REFER TO ARCHITECTURAL SHEETS FOR ADDITIONAL INFORMATION.
8. REFER TO SHEET E001 FOR SYMBOLS AND ABBREVIATIONS LEGEND.

Seal:

Revisions:

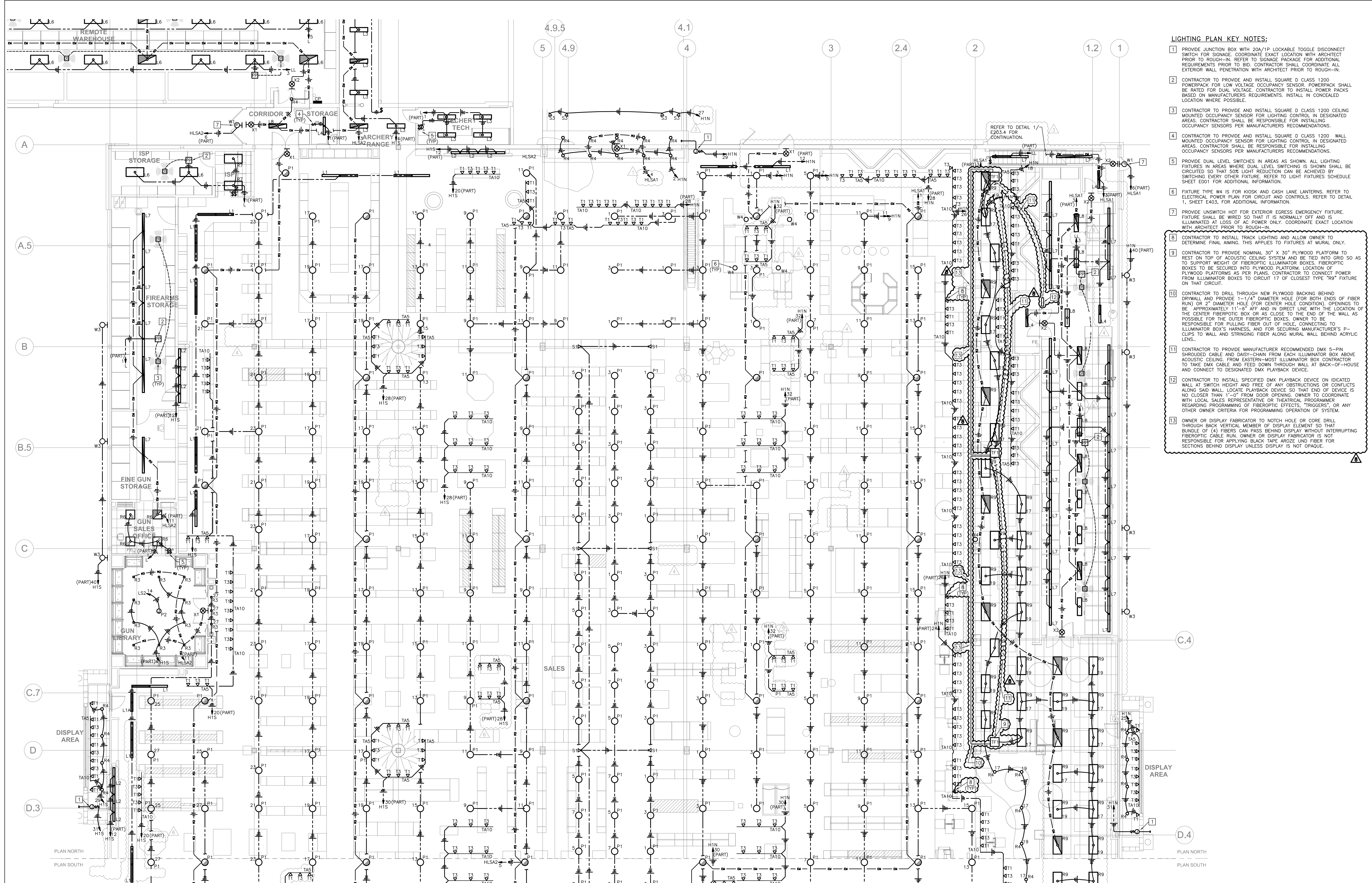
Drawing Set:
 BID AND PERMIT SET

Drawing Type:
 ELECTRICAL LIGHTING
 PLAN - OVERALL PLAN

Drawn By: KJH
 Date: 09.03.10

Sheet Number:

E203.1



- LIGHTING PLAN KEY NOTES:**
- 1 PROVIDE JUNCTION BOX WITH 20A/1P LOCKABLE TOGGLE DISCONNECT SWITCH FOR SIGNAGE. COORDINATE EXACT LOCATION WITH ARCHITECT PRIOR TO ROUGH-IN. REFER TO SIGNAGE PACKAGE FOR ADDITIONAL REQUIREMENTS PRIOR TO BID. CONTRACTOR SHALL COORDINATE ALL EXTERIOR WALL PENETRATION WITH ARCHITECT PRIOR TO ROUGH-IN.
 - 2 CONTRACTOR TO PROVIDE AND INSTALL SQUARE D CLASS 1200 POWERPACK FOR LOW VOLTAGE OCCUPANCY SENSOR. POWERPACK SHALL BE RATED FOR DUAL VOLTAGE. CONTRACTOR TO INSTALL POWER PACKS BASED ON MANUFACTURER'S REQUIREMENTS. INSTALL IN CONCEALED LOCATION WHERE POSSIBLE.
 - 3 CONTRACTOR TO PROVIDE AND INSTALL SQUARE D CLASS 1200 CEILING MOUNTED OCCUPANCY SENSOR FOR LIGHTING CONTROL IN DESIGNATED AREAS. CONTRACTOR SHALL BE RESPONSIBLE FOR INSTALLING OCCUPANCY SENSORS PER MANUFACTURER'S RECOMMENDATIONS.
 - 4 CONTRACTOR TO PROVIDE AND INSTALL SQUARE D CLASS 1200 WALL MOUNTED OCCUPANCY SENSOR FOR LIGHTING CONTROL IN DESIGNATED AREAS. CONTRACTOR SHALL BE RESPONSIBLE FOR INSTALLING OCCUPANCY SENSORS PER MANUFACTURER'S RECOMMENDATIONS.
 - 5 PROVIDE DUAL LEVEL SWITCHES IN AREAS AS SHOWN. ALL LIGHTING FIXTURES IN AREAS WHERE DUAL LEVEL SWITCHING IS SHOWN SHALL BE CIRCUITED SO THAT 50% LIGHT REDUCTION CAN BE ACHIEVED BY SWITCHING EVERY OTHER FIXTURE. REFER TO LIGHT FIXTURES SCHEDULE SHEET E001 FOR ADDITIONAL INFORMATION.
 - 6 FIXTURE TYPE W4 IS FOR KIOSK AND CASH LANE LANTERNS. REFER TO ELECTRICAL POWER PLAN FOR CIRCUIT AND CONTROLS. REFER TO DETAIL 1, SHEET E403, FOR ADDITIONAL INFORMATION.
 - 7 PROVIDE UNSWITCH HOT FOR EXTERIOR EGRESS EMERGENCY FIXTURE. FIXTURE SHALL BE WIRED SO THAT IT IS NORMALLY OFF AND IS ILLUMINATED AT LOSS OF AC POWER ONLY. COORDINATE EXACT LOCATION WITH ARCHITECT PRIOR TO ROUGH-IN.
 - 8 CONTRACTOR TO INSTALL TRACK LIGHTING AND ALLOW OWNER TO DETERMINE FINAL AIMING. THIS APPLIES TO FIXTURES AT MURAL ONLY.
 - 9 CONTRACTOR TO PROVIDE NOMINAL 30" X 30" PLYWOOD PLATFORM TO REST ON TOP OF ACoustic CEILING SYSTEM AND BE TIED INTO GRID SO AS TO SUPPORT WEIGHT OF FIBEROPTIC ILLUMINATOR BOXES. FIBEROPTIC BOXES TO BE SECURED INTO PLYWOOD PLATFORM. LOCATION OF PLYWOOD PLATFORMS AS PER PLANS. CONTRACTOR TO CONNECT POWER FROM ILLUMINATOR BOXES TO CIRCUIT 17 OF CLOSEST TYPE "R9" FIXTURE ON THAT CIRCUIT.
 - 10 CONTRACTOR TO DRILL THROUGH NEW PLYWOOD BACKING BEHIND DRYWALL AND PROVIDE 1-1/4" DIAMETER HOLE (FOR BOTH ENDS OF FIBER RUN) OR 2" DIAMETER HOLE (FOR CENTER HOLE CONDITION). OPENINGS TO BE APPROXIMATELY 11"-8" AFF AND IN DIRECT LINE WITH THE LOCATION OF THE CENTER FIBEROPTIC BOX OR AS CLOSE TO THE END OF THE WALL AS POSSIBLE FOR THE OUTER FIBEROPTIC BOXES. OWNER TO BE RESPONSIBLE FOR PULLING FIBER OUT OF HOLE, CONNECTING TO ILLUMINATOR BOX'S HARNESS, AND FOR SECURING MANUFACTURER'S P-CUPS TO WALL AND STRINGING FIBER ALONG MURAL WALL BEHIND ACRYLIC LENS.
 - 11 CONTRACTOR TO PROVIDE MANUFACTURER RECOMMENDED DMX 5-PIN SHROUDED CABLE AND DASHY-CHAIN FROM EACH ILLUMINATOR BOX ABOVE ACOUSTIC CEILING. FROM EASTERN-MOST ILLUMINATOR BOX CONTRACTOR TO TAKE DMX CABLE AND FEED DOWN THROUGH WALL AT BACK-OFF-HOUSE AND CONNECT TO DESIGNATED DMX PLAYBACK DEVICE.
 - 12 CONTRACTOR TO INSTALL SPECIFIED DMX PLAYBACK DEVICE ON INDICATED WALL AT SWITCH HEIGHT AND FREE OF ANY OBSTRUCTIONS OR CONFLICTS ALONG SAID WALL. LOCATE PLAYBACK DEVICE SO THAT END OF DEVICE IS NO CLOSER THAN 1'-0" FROM DOOR OPENING. OWNER TO COORDINATE WITH LOCAL SALES REPRESENTATIVE OR THEATRICAL PROGRAMMER REGARDING PROGRAMMING OF FIBEROPTIC EFFECTS, "TRIGGERS", OR ANY OTHER OWNER CRITERIA FOR PROGRAMMING OF SYSTEM.
 - 13 OWNER OR DISPLAY FABRICATOR TO NOTCH HOLE OR CORE DRILL THROUGH BACK VERTICAL MEMBER OF DISPLAY ELEMENT SO THAT BUNDLE OF (4) FIBERS CAN PASS BEHIND DISPLAY WITHOUT INTERRUPTING FIBEROPTIC CABLE RUN. OWNER OR DISPLAY FABRICATOR IS NOT RESPONSIBLE FOR APPLYING BLACK TAPE AROUND LENS AND FIBER FOR SECTIONS BEHIND DISPLAY UNLESS DISPLAY IS NOT GRAVUE.

1 ELECTRICAL LIGHTING PLAN - PLAN NORTH
SCALE: 1/8"=1'-0"

Seal:

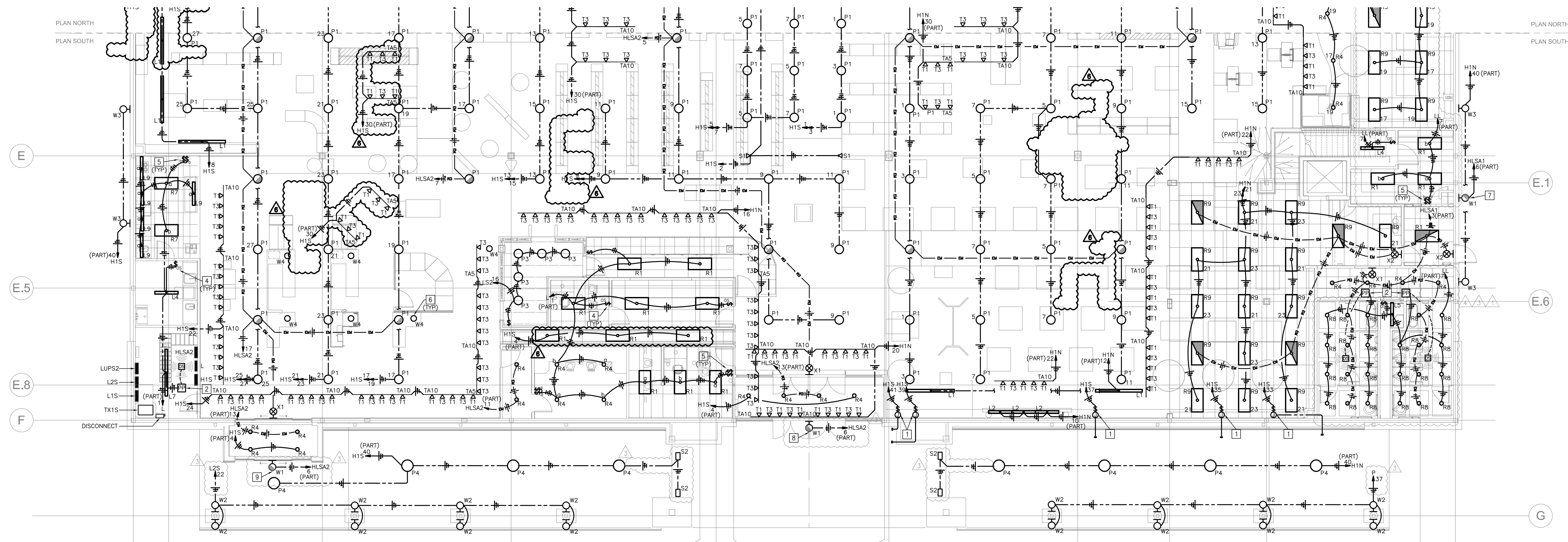
Revisions:

- 09.17.10 ADDENDUM 1
- 10.21.10 Bulletin #1
- 11.10.10 Bulletin #2
- 12.16.10 Bulletin #4
- 01.17.11 Bulletin #6

Drawing Set:
OUT TO BID/LL/PERMIT

Drawing Type:
ELECTRICAL LIGHTING
PLAN - PLAN NORTH

Drawn By: KJH
Date: 09.03.10
Sheet Number:



1 ELECTRICAL LIGHTING PLAN - PLAN SOUTH SCALE: 1/8"=1'-0"

- LIGHTING PLAN KEY NOTES:**
- 1 PROVIDE JUNCTION BOX WITH 20A/1P LOCKABLE TOGGLE DISCONNECT SWITCH FOR SIGNAGE. COORDINATE EXACT LOCATION WITH ARCHITECT PRIOR TO ROUGH-IN. REFER TO SIGNAGE PACKAGE FOR ADDITIONAL REQUIREMENTS PRIOR TO BID. CONTRACTOR SHALL COORDINATE ALL EXTERIOR WALL PENETRATION WITH ARCHITECT PRIOR TO ROUGH-IN.
 - 2 CONTRACTOR TO PROVIDE AND INSTALL SQUARE D CLASS 1200 POWERPACK FOR LOW VOLTAGE OCCUPANCY SENSOR. POWERPACK SHALL BE RATED FOR DUAL VOLTAGE. CONTRACTOR TO INSTALL POWER PACKS BASED ON MANUFACTURERS' REQUIREMENTS. INSTALL IN CONCEALED LOCATION WHERE POSSIBLE.
 - 3 CONTRACTOR TO PROVIDE AND INSTALL SQUARE D CLASS 1200 CEILING MOUNTED OCCUPANCY SENSOR FOR LIGHTING CONTROL IN DESIGNATED AREAS. CONTRACTOR SHALL BE RESPONSIBLE FOR INSTALLING OCCUPANCY SENSORS PER MANUFACTURERS' RECOMMENDATIONS.
 - 4 CONTRACTOR TO PROVIDE AND INSTALL SQUARE D CLASS 1200 WALL MOUNTED OCCUPANCY SENSOR FOR LIGHTING CONTROL IN DESIGNATED AREAS. CONTRACTOR SHALL BE RESPONSIBLE FOR INSTALLING OCCUPANCY SENSORS PER MANUFACTURERS' RECOMMENDATIONS.
 - 5 PROVIDE DUAL LEVEL SWITCHES IN AREAS AS SHOWN. ALL LIGHTING FIXTURES IN AREAS WHERE DUAL LEVEL SWITCHING IS SHOWN SHALL BE CIRCUITED SO THAT 50% LIGHT REDUCTION CAN BE ACHIEVED BY SWITCHING EVERY OTHER FIXTURE. REFER TO LIGHT FIXTURES SCHEDULE SHEET E001 FOR ADDITIONAL INFORMATION.
 - 6 FIXTURE TYPE W4 IS FOR KIOSK AND CASH LANE LANTERNS. REFER TO ELECTRICAL POWER PLAN FOR CIRCUIT AND CONTROLS. REFER TO DETAIL 1, SHEET E403, FOR ADDITIONAL INFORMATION.
 - 7 PROVIDE UNSWITCH HOT FOR EXTERIOR EGRESS EMERGENCY FIXTURE. FIXTURE SHALL BE WIRED SO THAT IT IS NORMALLY OFF AND IS ILLUMINATED AT LOSS OF AC POWER ONLY. COORDINATE EXACT LOCATION WITH ARCHITECT PRIOR TO ROUGH-IN.
 - 8 PROVIDE EXTERIOR BUILDING MOUNTED LIGHT FIXTURE FOR EMERGENCY EXIT DISCHARGE LIGHTING. FIXTURE SHALL BE MOUNTED AT 20' AFF AND SHALL BE ALWAYS ON. COORDINATE EXACT LOCATION WITH ARCHITECT PRIOR TO ROUGH-IN.
 - 9 PROVIDE EXTERIOR BUILDING MOUNTED LIGHT FIXTURE FOR EMERGENCY EXIT DISCHARGE LIGHTING. FIXTURE SHALL BE MOUNTED AT 7'-4" AFF AND SHALL BE ALWAYS ON. COORDINATE EXACT LOCATION WITH ARCHITECT PRIOR TO ROUGH-IN.

HENDERSON ENGINEERS
 7350 NORTH 16TH STREET, SUITE A10
 PHOENIX, AZ 85020
 TEL: 482.336.5200 FAX: 482.336.5201
 www.hel-eng.com
 105000355

Seal:

Revisions:

- △ 09.17.10 ADDENDUM 1
- △ 10.21.10 Bulletin #1
- △ 11.10.10 Bulletin #2
- △ 12.16.10 Bulletin #4

Drawing Set:
 OUT TO BID/LL/PERMIT

Drawing Type:
 ELECTRICAL LIGHTING
 PLAN - PLAN SOUTH

Drawn By: KJH
 Date: 09.03.10
 Sheet Number:

E203.3

Cabela's
 CABELA'S RETAIL, INCORPORATED
 Springfield
 Oregon

Bergmeyer
 51 Shiner Street
 Boston, MA 02210
 Phone: 617-542-1025
 www.bergmeyer.com

Project # 10019.00
 © Copyright 2010 Bergmeyer Associates P.C.

Seal:

Revisions:
▲ 10.21.10 Bulletin #1
▲ 12.16.10 Bulletin #4

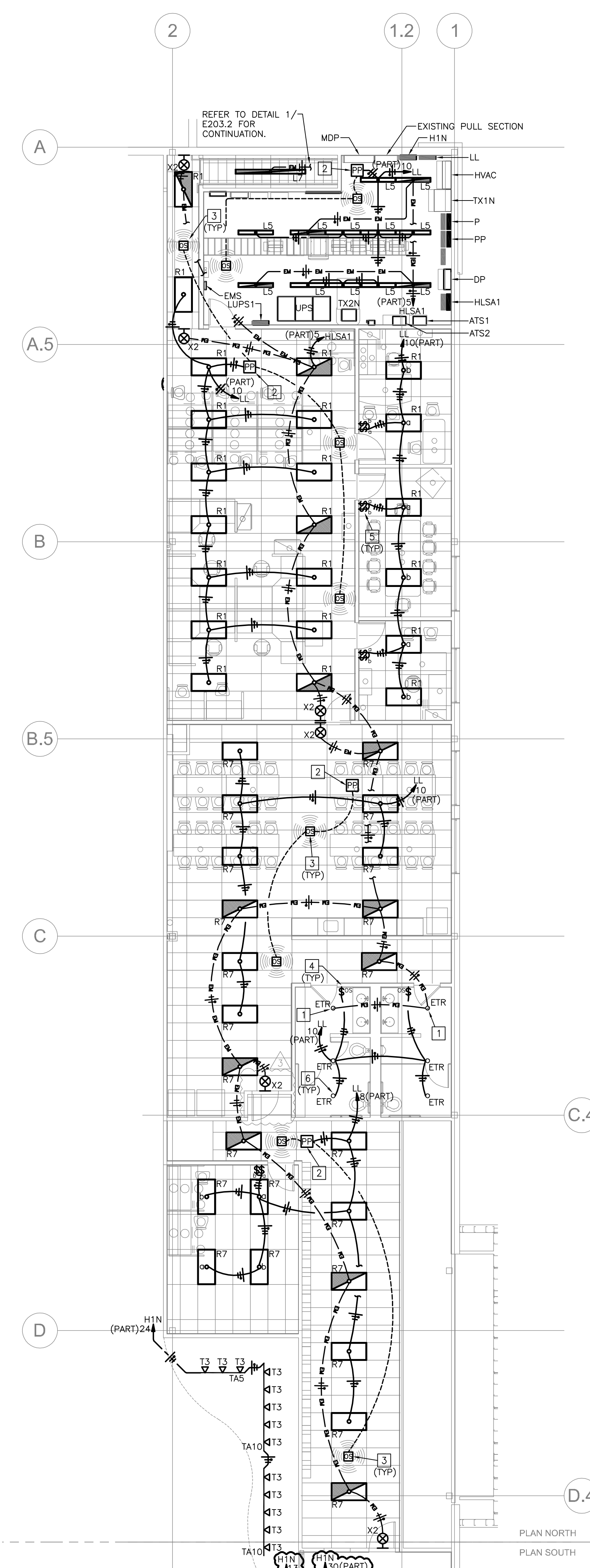
Drawing Set:
OUT TO BID/LL/PERMIT

Drawing Type:
ELECTRICAL LIGHTING PLAN -
REMOTE WAREHOUSE AND
MEZZANINE

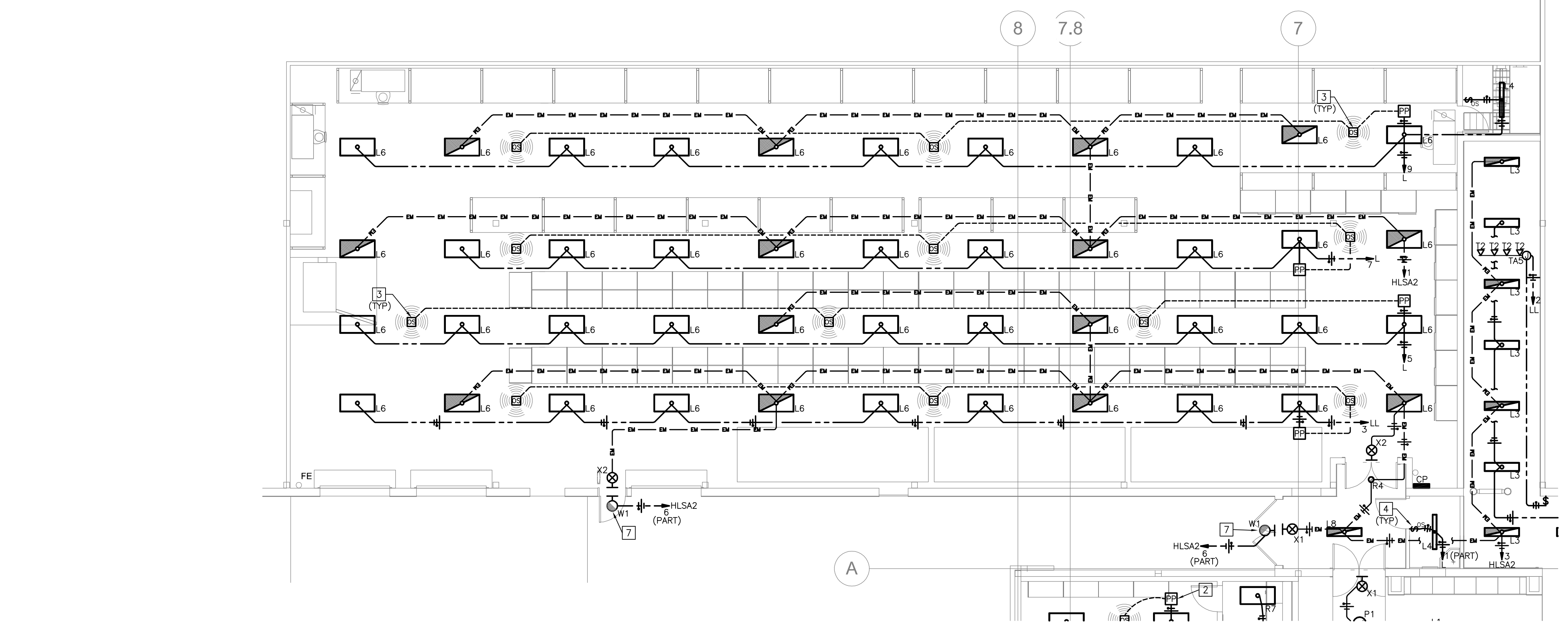
Drawn By: KJH
Date: 09.03.10

Sheet Number:

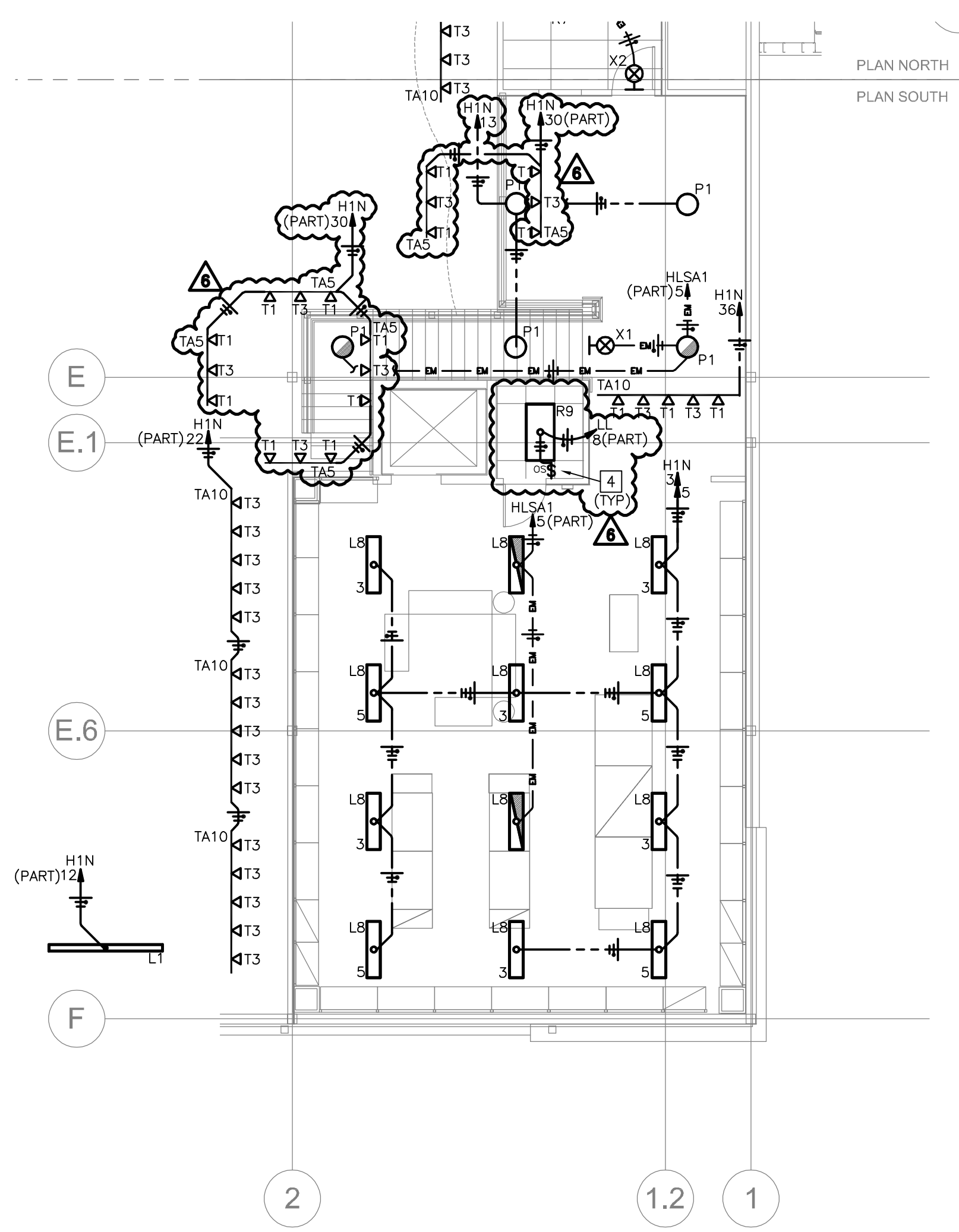
E203.4



1 ELECTRICAL LIGHTING PLAN - MEZZANINE NORTH
SCALE: 1/8"=1'-0"



3 ELECTRICAL LIGHTING PLAN - REMOTE WAREHOUSE
SCALE: 1/8"=1'-0"



2 ELECTRICAL LIGHTING PLAN - MEZZANINE SOUTH
SCALE: 1/8"=1'-0"

LIGHTING PLAN KEY NOTES:

- 1 EXISTING LIGHT FIXTURE TO REMAIN. CONTRACTOR SHALL RELAMP, RELENS AND REBALLAST AS REQUIRED. RECONNECT EXISTING FIXTURE TO NEW EMERGENCY LIGHTING CIRCUIT AS SHOWN ON PLANS.
- 2 CONTRACTOR TO PROVIDE AND INSTALL SQUARE D CLASS 1200 POWERPACK FOR LOW VOLTAGE OCCUPANCY SENSOR. POWERPACK SHALL BE RATED FOR DUAL VOLTAGE. CONTRACTOR TO INSTALL POWER PACKS BASED ON MANUFACTURERS REQUIREMENTS. INSTALL IN CONCEALED LOCATION WHERE POSSIBLE.
- 3 CONTRACTOR TO PROVIDE AND INSTALL SQUARE D CLASS 1200 CEILING MOUNTED OCCUPANCY SENSOR FOR LIGHTING CONTROL IN DESIGNATED AREAS. CONTRACTOR SHALL BE RESPONSIBLE FOR INSTALLING OCCUPANCY SENSORS PER MANUFACTURERS RECOMMENDATIONS.
- 4 CONTRACTOR TO PROVIDE AND INSTALL SQUARE D CLASS 1200 WALL MOUNTED OCCUPANCY SENSOR FOR LIGHTING CONTROL IN DESIGNATED AREAS. CONTRACTOR SHALL BE RESPONSIBLE FOR INSTALLING OCCUPANCY SENSORS PER MANUFACTURERS RECOMMENDATIONS.
- 5 PROVIDE DUAL LEVEL SWITCHES IN AREAS AS SHOWN. ALL LIGHTING FIXTURES IN AREAS WHERE DUAL LEVEL SWITCHING IS SHOWN SHALL BE CIRCUITED SO THAT 50% LIGHT REDUCTION CAN BE ACHIEVED BY SWITCHING EVERY OTHER FIXTURE. REFER TO LIGHT FIXTURES SCHEDULE SHEET E201 FOR ADDITIONAL INFORMATION.
- 6 EXISTING LIGHT FIXTURE TO REMAIN. CONTRACTOR SHALL RELAMP, RELENS AND REBALLAST AS REQUIRED. CONTRACTOR SHALL REWIRE RESTROOM LIGHTING AS SHOWN.
- 7 PROVIDE UNSWITCH HOT FOR EXTERIOR EGRESS EMERGENCY FIXTURE. FIXTURE SHALL BE WIRED SO THAT IT IS NORMALLY OFF AND IS ILLUMINATED AT LOSS OF AC POWER ONLY. COORDINATE EXACT LOCATION WITH ARCHITECT PRIOR TO ROUGH-IN.