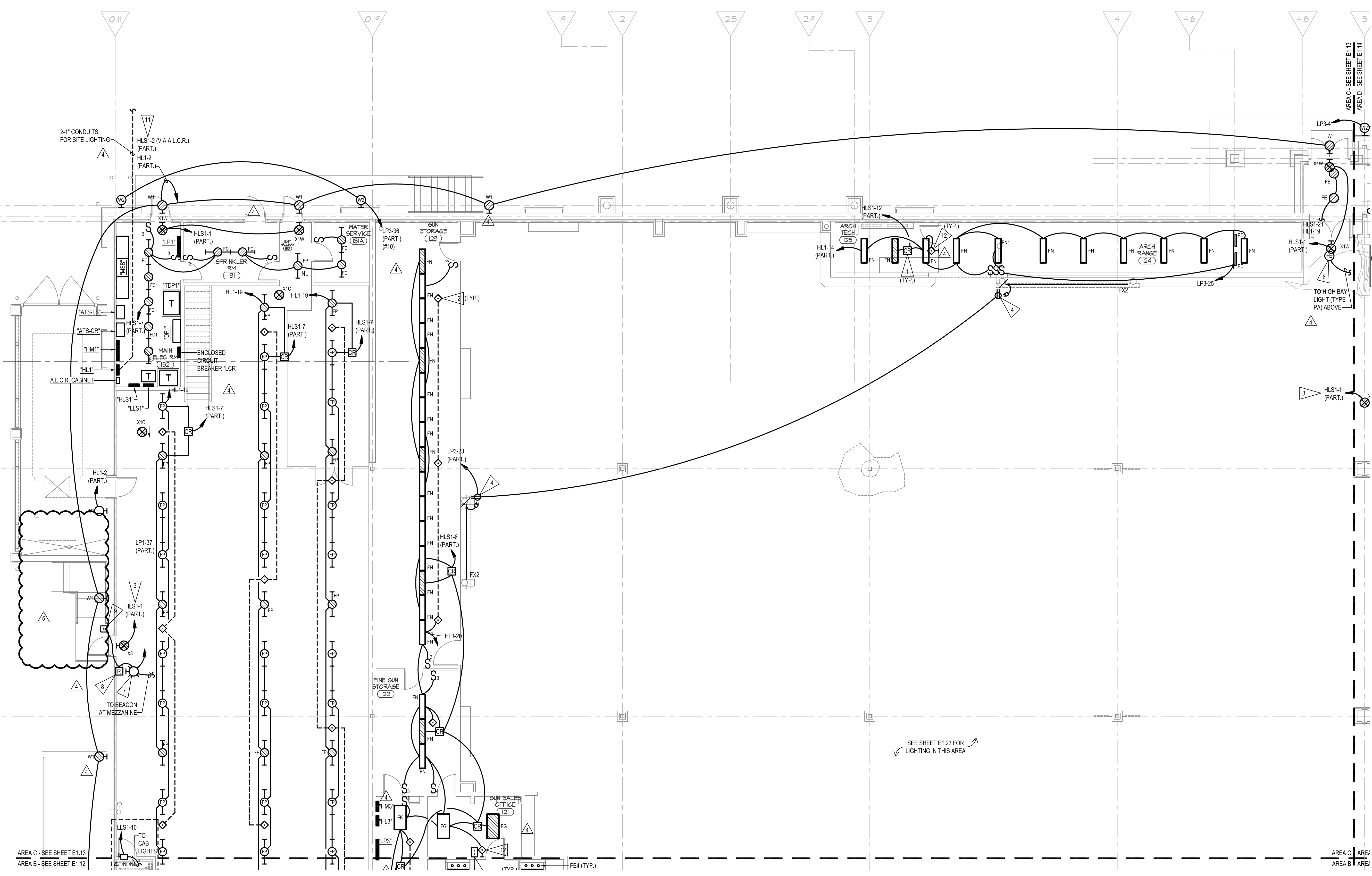


**GENERAL NOTES**

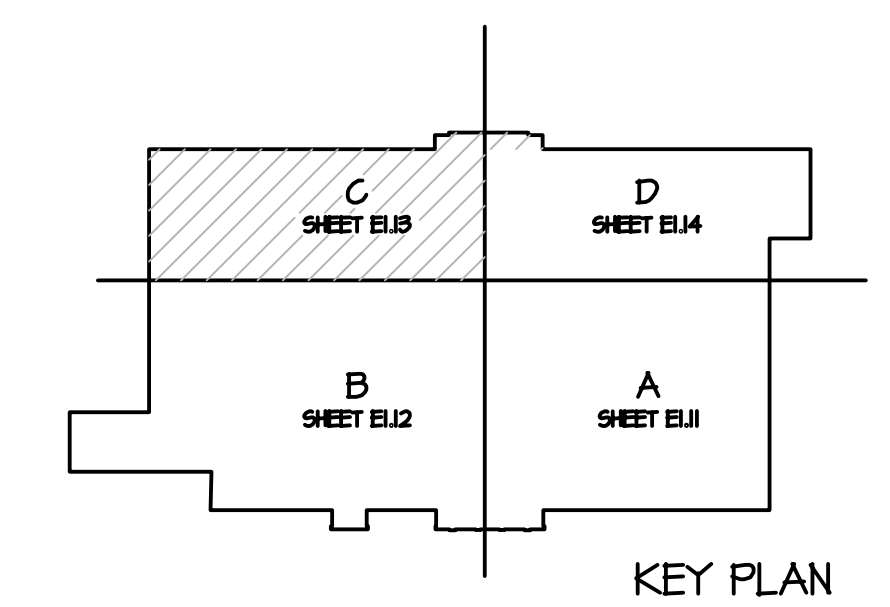
1. ALL LIGHT FIXTURES AND LAMPS ARE OWNER PROVIDED, INSTALLED BY ELECTRICAL CONTRACTOR.
2. ROUTE ALL CONDUIT AND WIRING AS HIGH AS ALLOWABLE AND CONCEAL FROM VIEW WHEN INSTALLED IN AREAS WITH EXPOSED STRUCTURE.
3. MINIMUM WIRE SIZE FOR 277V LIGHTING CIRCUITS SHALL BE #10 AWG.
4. PROVIDE A GREEN INSULATED GROUND WIRE IN ALL LIGHTING AND POWER BRANCH CIRCUITS.
5. PROVIDE A DEDICATED NEUTRAL CONDUCTOR FOR EACH BRANCH CIRCUIT. SHARED NEUTRALS ARE NOT ALLOWED UNLESS NOTED OTHERWISE.
6. SUBSCRIPT "N" INDICATES FIXTURE OR PORTION OF FIXTURE CONNECTED TO UNSWITCHED NIGHT LIGHTING CIRCUIT.
7. DO NOT MOUNT DEVICES BACK-TO-BACK.
8. EXPOSED BOX AND CONDUIT INSTALLATION SCHEDULE SHALL BE COORDINATED FOR PAINTING BY GENERAL CONTRACTOR. BOXES AND CONDUIT INSTALLED AFTER PAINTING BY GENERAL CONTRACTOR SHALL BE PAINTED BY ELECTRICIAN TO MATCH ADJACENT COLOR.

**FLAG NOTES**

- 1 PROVIDE AUTOMATIC LOAD CONTROL RELAY (CLR) NINE 24. INC. CATALOG #BLTC-R-CI-277 (OR EQUAL), MOUNT IN ACCESSIBLE LOCATION CONCEALED FROM VIEW. INSTALL PER MANUFACTURER'S INSTRUCTIONS. EMERGENCY LIGHT FIXTURES INDICATED BY HATCH SHALL TURN "ON/OFF" VIA CONTROLS SERVING THIS AREA UNDER NORMAL OPERATING CONDITIONS. UPON LOSS OF NORMAL POWER EMERGENCY FIXTURES SHALL TURN "ON" AUTOMATICALLY VIA AUTOMATIC LOAD CONTROL RELAY.
- 2 CEILING MOUNTED DUAL TECHNOLOGY OCCUPANCY SENSOR, SQUARE D CATALOG #SLSCDS2000. SET SENSITIVITY AND TIME DELAY ACCORDING TO OWNER'S REQUIREMENTS. SEE TYPICAL OCCUPANCY SENSOR CONNECTION DETAIL (E6.01)
- 3 CONNECT EXT LIGHTS TO DEDICATED LOCKABLE CIRCUIT BREAKER.
- 4 PROVIDE DUPLEX RECEPTACLE CONCEALED BEHIND LOG BEAM. FOR LINEAR LED ACCENT LIGHT LOCATED ON BACKSIDE OF LOG BEAM. COORDINATE FINAL LOCATION WITH ARCHITECTURAL ELEVATIONS AND SECTIONS.
- 5 EXTERIOR LIGHT FIXTURE MOUNTED TO STRUCTURAL LOG. CONCEAL ALL CONDUIT FROM VIEW WITHIN LOG. COORDINATE CONDUIT ROUTING AND FINAL LOCATION WITH ARCHITECTURAL AND STRUCTURAL DRAWINGS.
- 6 INSTALL DOWNLIGHT UNDERNEATH MOUNTAIN "SHELF". COORDINATE LOCATION WITH MOUNTAIN INSTALLER.
- 7 REVOLVING AMBER BEACON EDWARDS CAT. NO. 32A NS 40WH. PROVIDE "NBR" WHERE WALL MOUNTING IS INDICATED. MOUNT AT 10'-0".
- 8 OFF-DELAY RELAY IN A NEMA 1 ENCLOSURE. PROVIDE AN 11 PIN OFF-DELAY RELAY WITH 60-300 SECOND RANGE AND 10 AMP CONTACT RATING.
- 9 FLUSH WEATHER-PROOF PUSH-BUTTON EDWARDS SIGNAL #852.
- 10 NOT USED
- 11 EMERGENCY CIRCUITS INDICATED "VIA A.L.C.R." AT THE A.L.C.R. CABINET IN ELECTRICAL ROOM. PROVIDE A "NORMAL SWITCH-LEG" AND "NORMAL CONSTANT HOT" TO CONTROL THE A.L.C.R. REFER TO "SQUARE D" A.L.C.R. WIRING DIAGRAM FOR ADDITIONAL INFORMATION.
- 12 "AUTO ON/AUTO OFF" WALL SWITCH OCCUPANCY SENSOR, SQUARE D CATALOG #SLSPHS127AW. SET SENSITIVITY AND TIME DELAY ACCORDING TO OWNER'S REQUIREMENTS.



**PARTIAL FIRST FLOOR PLAN - LIGHTING - AREA C**



Revisions:

|              |          |
|--------------|----------|
| Rev 4, CCD 2 | 02-06-14 |
| Rev 5, CCD 3 | 03-31-14 |

Permit Issue 10-03-13

Drawing Name:  
**PARTIAL FIRST FLOOR PLAN - LIGHTING - AREA C**

Project #: 12511  
Drawn By: SMF  
Date: 06 February 2014  
Sheet Number:

**E1.13**

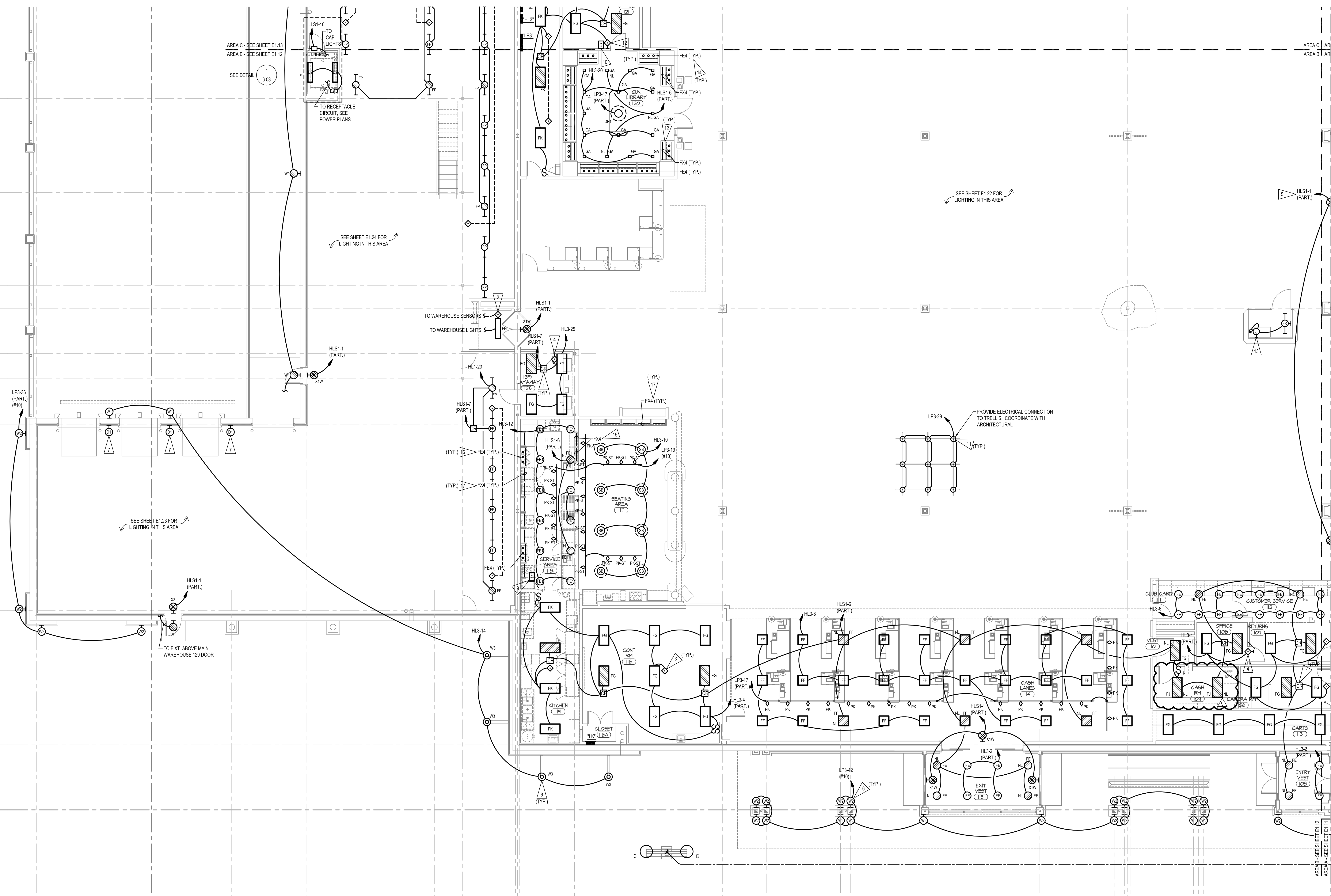


**GENERAL NOTES**

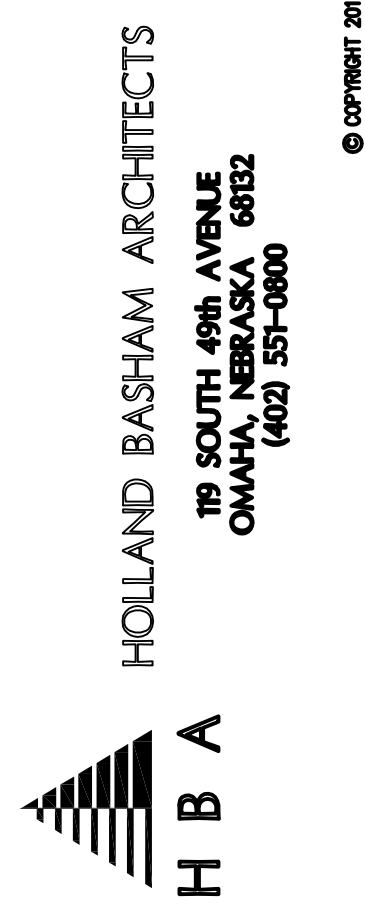
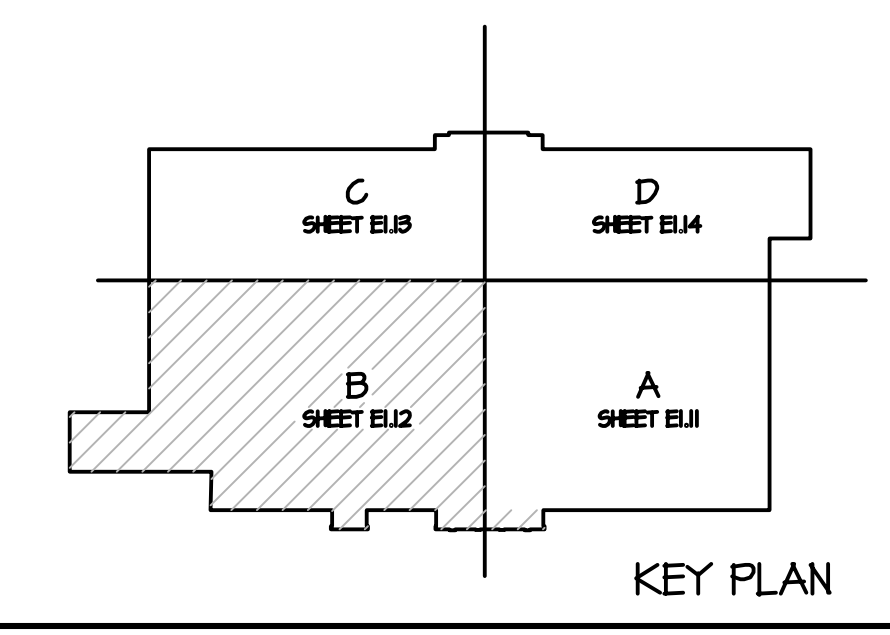
1. ALL LIGHT FIXTURES AND LAMPS ARE OWNER PROVIDED, INSTALLED BY ELECTRICAL CONTRACTOR.
2. ROUTE ALL CONDUIT AND WIRING AS HIGH AS ALLOWABLE AND CONCEAL FROM VIEW WHEN INSTALLED IN AREAS WITH EXPOSED STRUCTURE.
3. MINIMUM WIRE SIZE FOR 277V LIGHTING CIRCUITS SHALL BE #10 AWG.
4. PROVIDE A GREEN INSULATED GROUND WIRE IN ALL LIGHTING AND POWER BRANCH CIRCUITS.
5. PROVIDE A DEDICATED NEUTRAL CONDUCTOR FOR EACH BRANCH CIRCUIT. SHARED NEUTRALS ARE NOT ALLOWED UNLESS NOTED OTHERWISE.
6. SUBSCRIPT 'N' INDICATES FIXTURE OR PORTION OF FIXTURE CONNECTED TO UNSWITCHED NIGHT LIGHTING CIRCUIT.
7. DO NOT MOUNT DEVICES BACK-TO-BACK.
8. EXPOSED BOX AND CONDUIT INSTALLATION SCHEDULE SHALL BE COORDINATED FOR PAINTING BY GENERAL CONTRACTOR. BOXES AND CONDUIT SHALL BE INSTALLED AFTER PAINTING BY GENERAL CONTRACTOR SHALL BE PAINTED BY ELECTRICIAN TO MATCH ADJACENT COLOR.

**FLAG NOTES**

1. PROVIDE AUTOMATIC LOAD CONTROL RELAY (CRL NINE 24 IN. CATALOG #BLTC-R-C1-277 (OR EQUAL), MOUNT IN ACCESSIBLE LOCATION CONCEALED FROM VIEW. INSTALL PER MANUFACTURER'S INSTRUCTIONS. EMERGENCY LIGHT FIXTURES INDICATED BY HATCH SHALL TURN "ON/OFF" VIA CONTROLS SERVING THIS AREA UNDER NORMAL OPERATING CONDITIONS. UPON LOSS OF NORMAL POWER EMERGENCY FIXTURES SHALL TURN "ON" AUTOMATICALLY VIA AUTOMATIC LOAD CONTROL RELAY.
2. CEILING MOUNTED DUAL TECHNOLOGY OCCUPANCY SENSOR, SQUARE D CATALOG #SLSPW5127AW. SET SENSITIVITY AND TIME DELAY ACCORDING TO OWNER'S REQUIREMENTS. SEE TYPICAL OCCUPANCY SENSOR CONNECTION DETAIL (E6.01)
3. NOT USED.
4. \*AUTO ON/AUTO OFF\* WALL SWITCH OCCUPANCY SENSOR, SQUARE D CATALOG #SLSPW5127AW. SET SENSITIVITY AND TIME DELAY ACCORDING TO OWNER'S REQUIREMENTS.
5. CONNECT EXIT LIGHTS TO DEDICATED LOCKABLE CIRCUIT BREAKER.
6. EXTERIOR LIGHT FIXTURE MOUNTED TO STRUCTURAL LOG. CONCEAL ALL CONDUIT FROM VIEW WITHIN LOG. COORDINATE CONDUIT ROUTING AND FINAL LOCATION WITH ARCHITECTURAL AND STRUCTURAL DRAWINGS.
7. COORDINATE DOCK LIGHT INSTALLATION WITH DOCK SYSTEMS INSTALLER.
8. \*SQUARE D\* LOW VOLTAGE SWITCH FOR MANUAL OVERRIDE OF LIGHT FIXTURES IN SEATING AREA 117 AND SERVICE AREA 118. SQUARE D CATALOG #SLSV1. PROVIDE ONE BELDEN 27329 CABLE (OR EQUIVALENT) FROM LOW VOLTAGE SWITCH TO POWERLINK PANEL LOW VOLTAGE BUS. COORDINATE PANEL CONNECTION WITH \*SQUARE D\* LIGHTING CONTROL DRAWINGS.
9. \*SQUARE D\* LOW VOLTAGE SWITCH FOR MANUAL OVERRIDE OF LIGHT FIXTURES IN GUN LIBRARY 120. SQUARE D CATALOG #SLSV1. PROVIDE ONE BELDEN 27329 CABLE (OR EQUIVALENT) FROM LOW VOLTAGE SWITCH TO POWERLINK PANEL LOW VOLTAGE BUS. COORDINATE PANEL CONNECTION WITH \*SQUARE D\* LIGHTING CONTROL DRAWINGS.
10. PROVIDE WIREMOLD SURFACE BOX MOUNTED FACE-UP ON TOP OF TRELLIS AT INTERSECTION WITH WIREMOLD RACEWAY BETWEEN BOXES. FROM BOX THAT IS FACE-UP, DRILL THROUGH FRAMING INTERSECTION AND PROVIDE CONDUIT AND WIRING TO A LIGHTING OUTLET BOX FLUSH MOUNTED IN WOODEN DISK ON BOTTOM OF TRELLIS. CENTER RACEWAY AND BOXES ON FRAMING TO MINIMIZE APPEARANCE. PROVIDE BLACK DUPLEX PLATE AND PAINT RACEWAY/BOXES "BLACK" TO MATCH TRELLIS HARDWARE.
11. COORDINATE THE INSTALLATION OF THE LED STRIP LIGHT CABINET LIGHTS WITH VILLA LIGHTING (SUPPLIER) AND THE CASEWORK CONTRACTOR. THE CASEWORK CONTRACTOR SHALL INSTALL THE LIGHTS. THE ELECTRICAL CONNECTIONS ARE BY THE ELECTRICAL CONTRACTOR. INSTALL STRIP LIGHTS UNDER MIDDLE SHELF. INSTALL STRIP LIGHTS AT TOP AND SIDES OF SHOWCASE. COORDINATE SEGMENT LENGTHS AND ELECTRICAL POWER SUPPLY CONNECTIONS WITH CASEWORK CONTRACTOR. REFER TO ARCHITECTURAL DETAILS FOR ADDITIONAL INFORMATION ON LIGHT FIXTURE AND POWER SUPPLY PLACEMENT. PLUG-IN THE POWER SUPPLIES INTO THE WIREMOLD RECEPTACLE.
12. PROVIDE CONDUIT AND WIRING WITHIN WALLS OF FITTING ROOM FROM LIGHT FIXTURE TO A FLUSH MOUNTED BOX WITH A SINGLE GANG RING. PROVIDE A SINGLE-GANG STAINLESS STEEL PLATE WITH STRAIN-RELIEF, 3" OF 12-3 CORD AND 5-15 PLUG.
13. COORDINATE THE INSTALLATION OF THE PUCK LIGHT CABINET LIGHTING WITH VILLA LIGHTING (SUPPLIER) AND THE CASEWORK CONTRACTOR. THE CASEWORK CONTRACTOR SHALL INSTALL THE LIGHTS. THE ELECTRICAL CONNECTIONS ARE BY THE ELECTRICAL CONTRACTOR. INSTALL PUCK LIGHTS AT THE TOP OF THE CABINETS. COORDINATE ELECTRICAL POWER SUPPLY CONNECTIONS WITH CASEWORK CONTRACTOR. REFER TO ARCHITECTURAL DETAILS FOR ADDITIONAL INFORMATION ON LIGHT FIXTURE AND POWER SUPPLY PLACEMENT. PLUG-IN THE POWER SUPPLIES INTO THE WIREMOLD RECEPTACLE.
14. COORDINATE THE INSTALLATION OF THE STRIP LIGHTS WITHIN THE DISPLAY CASE WITH VILLA LIGHTING (SUPPLIER) AND THE CASEWORK CONTRACTOR. THE CASEWORK CONTRACTOR SHALL INSTALL THE LIGHTS. THE ELECTRICAL CONNECTIONS ARE BY THE ELECTRICAL CONTRACTOR. INSTALL STRIP LIGHTS AT THE TOP AND SIDES OF THE DISPLAY CASE. COORDINATE ELECTRICAL POWER SUPPLY CONNECTIONS WITH CASEWORK CONTRACTOR. REFER TO ARCHITECTURAL DETAILS FOR ADDITIONAL INFORMATION ON LIGHT FIXTURE AND POWER SUPPLY PLACEMENT. PLUG-IN THE POWER SUPPLIES INTO THE RECEPTACLE ABOVE THE CASEWORK.
15. COORDINATE THE INSTALLATION OF THE PUCK LIGHT CABINET LIGHTING WITH VILLA LIGHTING (SUPPLIER) AND THE CASEWORK CONTRACTOR. THE CASEWORK CONTRACTOR SHALL INSTALL THE LIGHTS. THE ELECTRICAL CONNECTIONS ARE BY THE ELECTRICAL CONTRACTOR. INSTALL PUCK LIGHTS AT THE TOP OF THE CABINETS. COORDINATE ELECTRICAL POWER SUPPLY CONNECTIONS WITH CASEWORK CONTRACTOR. REFER TO ARCHITECTURAL DETAILS FOR ADDITIONAL INFORMATION ON LIGHT FIXTURE AND POWER SUPPLY PLACEMENT. PLUG-IN THE POWER SUPPLIES INTO THE RECEPTACLE ABOVE THE CASEWORK.
16. COORDINATE THE INSTALLATION OF THE LED STRIP LIGHT CABINET LIGHTS WITH VILLA LIGHTING (SUPPLIER) AND THE CASEWORK CONTRACTOR. THE CASEWORK CONTRACTOR SHALL INSTALL THE LIGHTS. THE ELECTRICAL CONNECTIONS ARE BY THE ELECTRICAL CONTRACTOR. INSTALL STRIP LIGHTS AT THE TOP SHELF. COORDINATE SEGMENT LENGTHS AND ELECTRICAL POWER SUPPLY CONNECTIONS WITH CASEWORK CONTRACTOR. REFER TO ARCHITECTURAL DETAILS FOR ADDITIONAL INFORMATION ON LIGHT FIXTURE AND POWER SUPPLY PLACEMENT. PLUG-IN THE POWER SUPPLIES INTO THE RECEPTACLE ABOVE THE CASEWORK.



**PARTIAL FIRST FLOOR PLAN - LIGHTING - AREA B**



**Cabela's Retail Center**  
Tualatin, Oregon

Revisions:

|              |          |
|--------------|----------|
| Permit Issue | 10-03-13 |
| Rev 4, CCD 2 | 02-06-14 |
| Rev 9, CCD 7 | 06-20-14 |

Drawing Name:  
**PARTIAL FIRST FLOOR PLAN - LIGHTING - AREA B**

Project #: 12511  
Drawn By: SMF  
Date: 06 February 2014  
Sheet Number:

**E1.12**

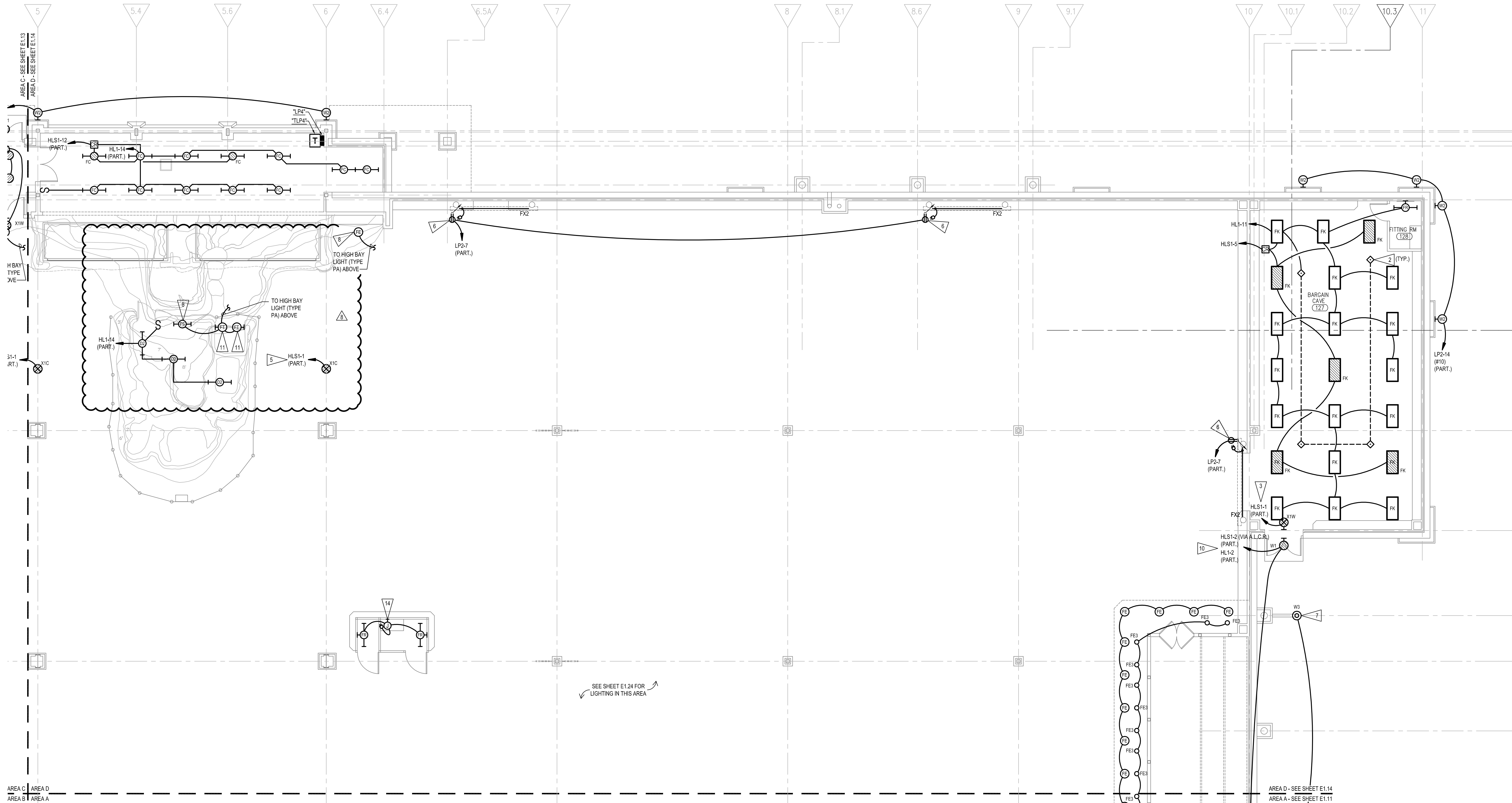


**GENERAL NOTES**

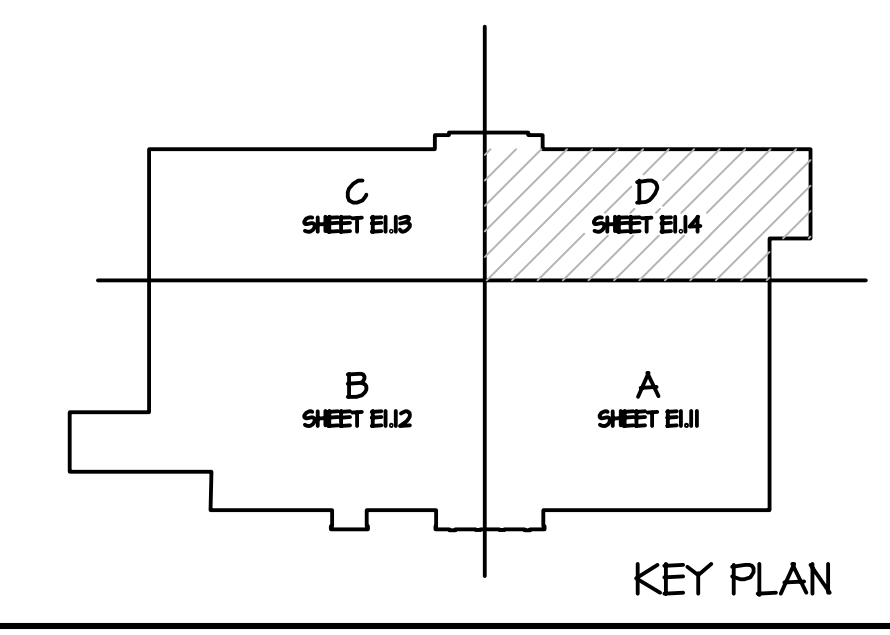
1. ALL LIGHT FIXTURES AND LAMPS ARE OWNER PROVIDED, INSTALLED BY ELECTRICAL CONTRACTOR.
2. ROUTE ALL CONDUIT AND WIRING AS HIGH AS ALLOWABLE AND CONCEAL FROM VIEW WHEN INSTALLED IN AREAS WITH EXPOSED STRUCTURE.
3. MINIMUM WIRE SIZE FOR 277V LIGHTING CIRCUITS SHALL BE #10 AWG.
4. PROVIDE A GREEN INSULATED GROUND WIRE IN ALL LIGHTING AND POWER BRANCH CIRCUITS.
5. PROVIDE A DEDICATED NEUTRAL CONDUCTOR FOR EACH BRANCH CIRCUIT. SHARED NEUTRALS ARE NOT ALLOWED UNLESS NOTED OTHERWISE.
6. SUBSCRIPT "N" INDICATES FIXTURE OR PORTION OF FIXTURE CONNECTED TO UNSWITCHED NIGHT LIGHTING CIRCUIT.
7. DO NOT MOUNT DEVICES BACK-TO-BACK.
8. EXPOSED BOX AND CONDUIT INSTALLATION SCHEDULE SHALL BE COORDINATED FOR PAINTING BY GENERAL CONTRACTOR. BOXES AND CONDUIT INSTALLED AFTER PAINTING BY GENERAL CONTRACTOR SHALL BE PAINTED BY ELECTRICIAN TO MATCH ADJACENT COLOR.

**FLAG NOTES**

1. PROVIDE AUTOMATIC LOAD CONTROL RELAY (CRL NINE 24, INC. CATALOG #BLTC-R-CI-277 (OR EQUAL), MOUNT IN ACCESSIBLE LOCATION CONCEALED FROM VIEW. INSTALL PER MANUFACTURER'S INSTRUCTIONS. EMERGENCY LIGHT FIXTURES INDICATED BY HATCH SHALL TURN "ON/OFF" VIA CONTROLS SERVING THIS AREA UNDER NORMAL OPERATING CONDITIONS. UPON LOSS OF NORMAL POWER EMERGENCY FIXTURES SHALL TURN "ON" AUTOMATICALLY VIA AUTOMATIC LOAD CONTROL RELAY.
2. CEILING MOUNTED DUAL TECHNOLOGY OCCUPANCY SENSOR, SQUARE D CATALOG #SLSD252000. SET SENSITIVITY AND TIME DELAY ACCORDING TO OWNER'S REQUIREMENTS. SEE TYPICAL OCCUPANCY SENSOR CONNECTION DETAIL (E6.01)
3. NOT USED.
4. \*AUTO ON/AUTO OFF\* WALL SWITCH OCCUPANCY SENSOR, SQUARE D CATALOG #SLSPW51277AW. SET SENSITIVITY AND TIME DELAY ACCORDING TO OWNER'S REQUIREMENTS.
5. CONNECT EXLT LIGHTS TO DEDICATED LOCKABLE CIRCUIT BREAKER.
6. PROVIDE DUPLEX RECEPTACLE CONCEALED BEHIND LOG BEAM. FOR LINEAR LED ACCENT LIGHT LOCATED ON BACKSIDE OF LOG BEAM. COORDINATE FINAL LOCATION WITH ARCHITECTURAL ELEVATIONS AND SECTIONS.
7. EXTERIOR LIGHT FIXTURE MOUNTED TO STRUCTURAL LOG. CONCEAL ALL CONDUIT FROM VIEW WITHIN LOG. COORDINATE CONDUIT ROUTING AND FINAL LOCATION WITH ARCHITECTURAL AND STRUCTURAL DRAWINGS.
8. INSTALL LINEAR LED UNDERNEATH WITHIN DISPLAY CABINET. COORDINATE LOCATION WITH MOUNTAIN INSTALLER.
9. PROVIDE CONDUIT AND WIRING WITHIN WALLS OF FITTING ROOM FROM LIGHT FIXTURE TO A FLUSH MOUNTED BOX WITH A SINGLE GANG RING. PROVIDE A SINGLE GANG STAINLESS STEEL PLATE WITH STRAIN-RELIEF. 3" OF 12-3 CORD AND 5-15 PLUG.
10. EMERGENCY CIRCUITS INDICATED (VIA A.L.C.R.'), AT THE A.L.C.R. CABINET IN ELECTRICAL ROOM. PROVIDE A "NORMAL SWITCH-LEG" AND "NORMAL CONSTANT HOT" TO CONTROL THE A.L.C.R. REFER TO SQUARE D A.L.C.R. WIRING DIAGRAM FOR ADDITIONAL INFORMATION.
11. INSTALL LIGHT AT APPROX 24" AFF WITHIN BEAR CAVE. COORDINATE WITH OWNER.



**PARTIAL FIRST FLOOR PLAN - LIGHTING - AREA D**  
 0' 2' 4' 8' 16'



Seat:

|              |          |
|--------------|----------|
| Revisions:   |          |
| Permit Issue | 10-03-13 |
| Rev 4, CCD 2 | 02-06-14 |
| Rev 8, CCD 6 | 06-02-14 |

Drawing Name:  
**PARTIAL FIRST FLOOR PLAN - LIGHTING - AREA D**

Project #: 12511  
 Drawn By: SMF  
 Date: 06 February 2014

Sheet Number:

**E1.14**

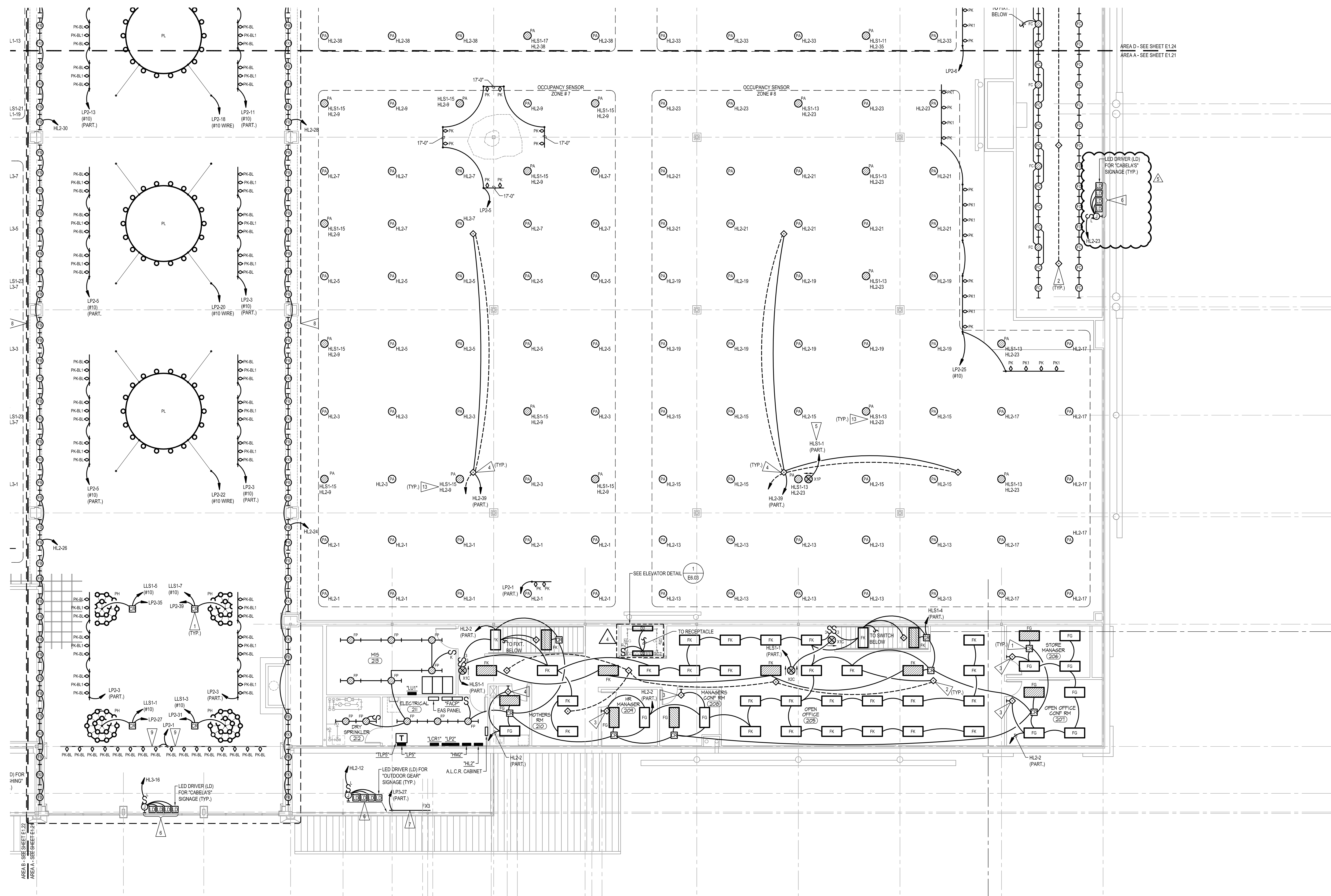


**GENERAL NOTES**

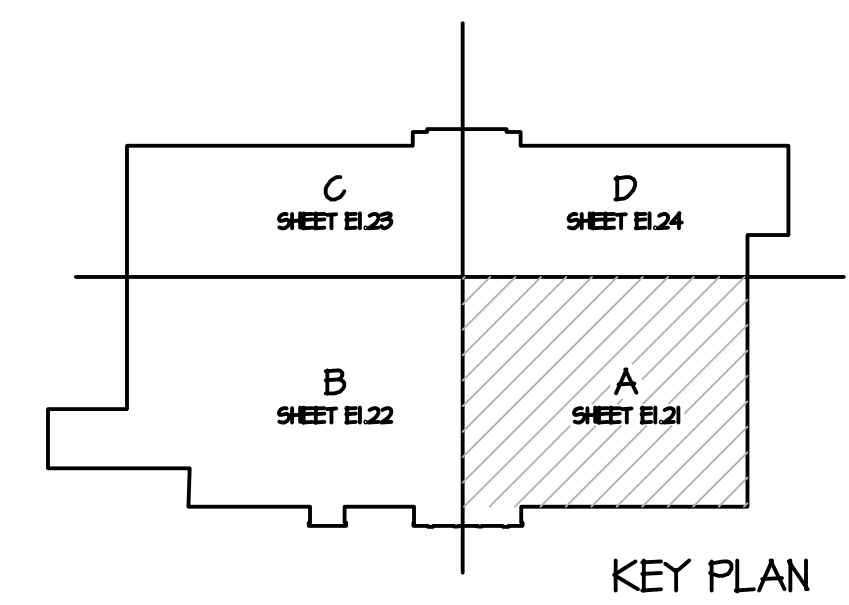
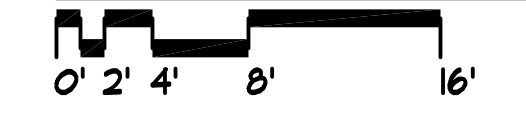
1. ALL LIGHT FIXTURES AND LAMPS ARE OWNER PROVIDED, INSTALLED BY ELECTRICAL CONTRACTOR.
2. ROUTE ALL CONDUIT AND WIRING AS HIGH AS ALLOWABLE AND CONCEAL FROM VIEW WHEN INSTALLED IN AREAS WITH EXPOSED STRUCTURE.
3. MINIMUM WIRE SIZE FOR 277V LIGHTING CIRCUITS SHALL BE #10 AWG.
4. PROVIDE A GREEN INSULATED GROUND WIRE IN ALL LIGHTING AND POWER BRANCH CIRCUITS.
5. PROVIDE A DEDICATED NEUTRAL CONDUCTOR FOR EACH BRANCH CIRCUIT. SHARED NEUTRALS ARE NOT ALLOWED UNLESS NOTED OTHERWISE.
6. SUBSCRIPT "N" INDICATES FIXTURE OR PORTION OF FIXTURE CONNECTED TO UNSWITCHED NIGHT LIGHTING CIRCUIT.
7. DO NOT MOUNT DEVICES BACK-TO-BACK.
8. EXPOSED BOX AND CONDUIT INSTALLATION SCHEDULE SHALL BE COORDINATED FOR PAINTING BY GENERAL CONTRACTOR. BOXES AND CONDUIT INSTALLED AFTER PAINTING BY GENERAL CONTRACTOR SHALL BE PAINTED BY ELECTRICIAN TO MATCH ADJACENT COLOR.

**FLAG NOTES**

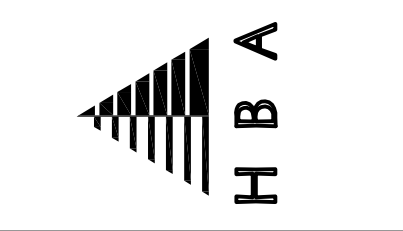
- NOTE: FLAG NOTES ARE COMMON TO SHEETS E1.21, E1.22, E1.23, E1.24. ALL FLAG NOTES MAY NOT BE USED ON EACH SHEET.
1. EMERGENCY LIGHTING TRANSFER SWITCH (CR1, NINE 24, INC. CATALOG #BLTC-R2-277 (OR EQUAL), MOUNT IN ACCESSIBLE LOCATION CONCEALED FROM VIEW. INSTALL PER MANUFACTURER'S INSTRUCTIONS. ASSOCIATED EMERGENCY LIGHT FIXTURES INDICATED BY HATCH SHALL TURN "ON/OFF" VIA CONTROLS SERVING THIS AREA UNDER NORMAL OPERATING CONDITIONS. UPON LOSS OF NORMAL POWER EMERGENCY FIXTURES SHALL TURN "ON" AUTOMATICALLY VIA EMERGENCY LIGHTING TRANSFER SWITCH.
  2. CEILING MOUNTED DUAL TECHNOLOGY OCCUPANCY SENSOR, SQUARE D CATALOG #SLSPWS2000. SET SENSITIVITY AND TIME DELAY ACCORDING TO OWNER'S REQUIREMENTS. SEE TYPICAL OCCUPANCY SENSOR CONNECTION DETAIL.
  3. "AUTO ON/AUTO OFF" WALL SWITCH OCCUPANCY SENSOR, SQUARE D CATALOG #SLSPWS127AW. SET SENSITIVITY AND TIME DELAY ACCORDING TO OWNER'S REQUIREMENTS.
  4. SQUARE D SLSFPS1347 OCCUPANCY SENSOR AND LVSPSU037RRU POWER SUPPLY. CONNECT SENSORS TO UNSWITCHED CIRCUIT INDICATED. PROVIDE SWIRE LOW VOLTAGE CONNECTION BETWEEN SENSORS AND FROM SENSORS TO POWERLINK BUS.
  5. CONNECT EXIT LIGHTS TO DEDICATED LOCKABLE CIRCUIT BREAKER.
  6. COORDINATE FINAL LOCATION OF LED DRIVERS SERVING ILLUMINATED SIGNAGE WITH ARCHITECTURAL PRIOR TO RIGGING. COORDINATE ADDITIONAL CONNECTION REQUIREMENTS WITH SIGN PACKAGE. ROUTE ALL WIRING IN CONDUIT. CONCEAL ALL CONDUIT, WIREWAYS, AND JUNCTION BOXES FROM VIEW.
  7. MOUNT LINEAR LED LIGHT FIXTURE WITHIN STOREFRONT DORMER WINDOW. COORDINATE FINAL LOCATION WITH ARCHITECTURAL ELEVATIONS AND SECTIONS.
  8. EXPOSED BOXES AND CONDUITS ARE NOT PERMITTED WITHIN AREA INDICATED BY DASHED LINE.
  9. MOUNT TRACK TO UNDERSIDE OF TRUSS. COORDINATE FINAL LOCATION WITH ARCHITECTURAL.
  10. PLC SENSORS, CES SERIES OUTDOOR PHOTOSENSOR FOR LC-8 CONTROLLER. PROVIDE A ONE-HUB ALUMINUM FS STYLE BOX WITH A ONE-HUB WEATHER-PROOF COVER. INSTALL PHOTOSENSOR IN COVER. PROVIDE A BELDEN CABLE, 18/3 STRANDED, WIGROUND FROM PHOTOSENSOR TO LC-8 CONTROLLER.
  11. MOUNT BEACON BASE-UP, TO BOTTOM OF BAR JOIST.
  12. REVOLVING AMBER BEACON, EDWARDS CAT. NO. 52A NS 40WH.
  13. FOR EACH OCCUPANCY SENSOR ZONE, WHERE EMERGENCY AND NORMAL CIRCUITS ARE INDICATED TOGETHER, ROUTE EMERGENCY CIRCUIT VIA AN A.L.C.R. IN CABINET IN ELECTRICAL ROOM. NORMAL LIGHTING CIRCUIT INDICATED SHALL PROVIDE THE "REGULAR SWITCH HOT" AND "REGULAR CONSTANT HOT" TO CONTROL THE A.L.C.R. REFER TO "SQUARE D" A.L.C.R. WIRING DIAGRAM FOR ADDITIONAL INFORMATION.



**PARTIAL MEZZANINE FLOOR PLAN - LIGHTING - AREA A**



HOLLAND BASHAM ARCHITECTS  
 78 SOUTH 40th AVENUE  
 OMAHA, NEBRASKA 68132  
 (402) 551-0800



MORRISSEY engineering inc.  
 mechanical | electrical | technology | commissioning  
 4000 West 104th Street  
 Lincoln, NE 68516  
 P: 402.471.4144  
 www.morrisseyengineering.com

**Cabela's Retail Center**  
 Tualatin, Oregon

Seal:

Revisions:  
 Permit Issue 10-03-13

Rev 4, CCD 2 02-06-14  
 Rev 5, CCD 5 03-31-14

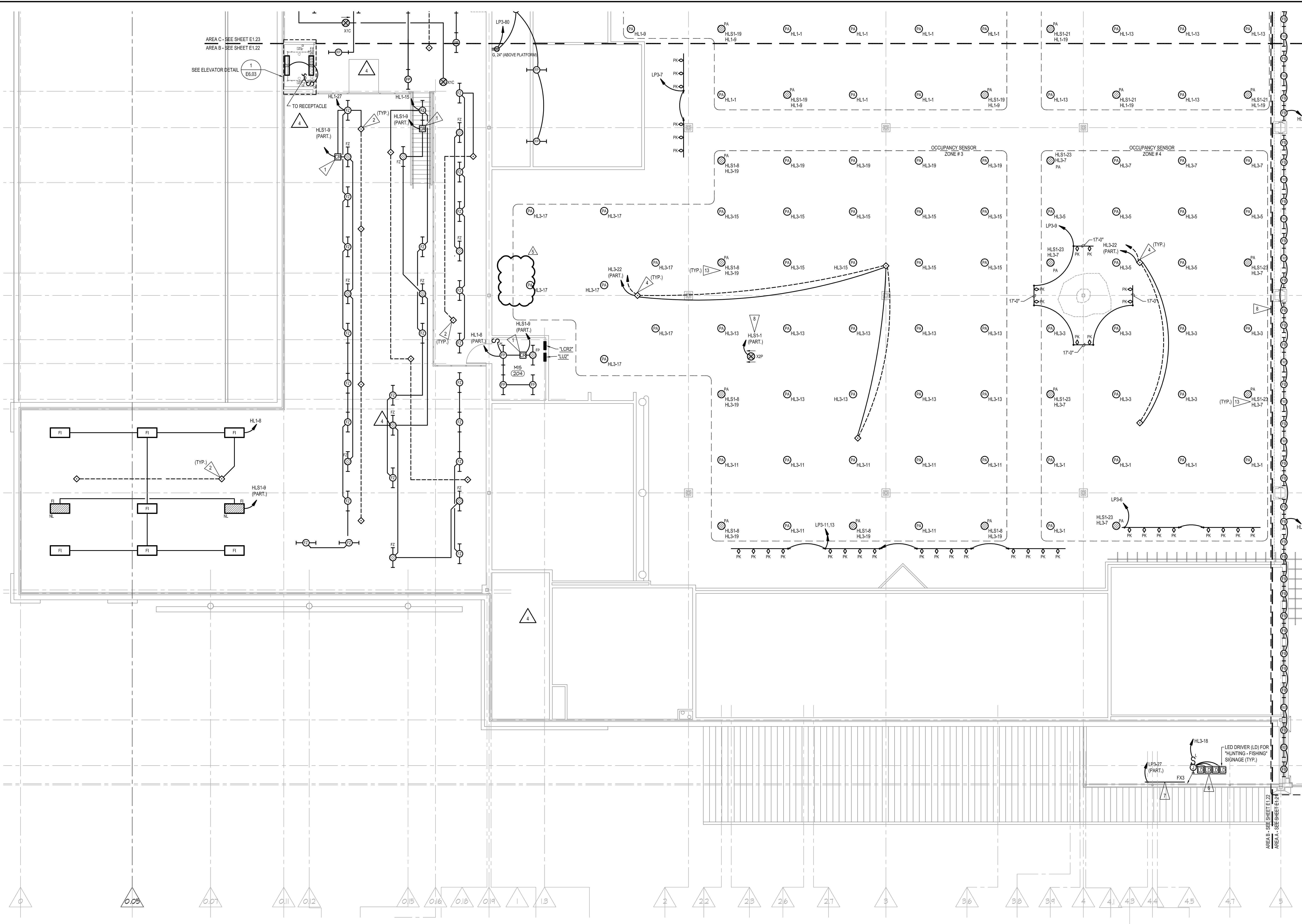
Drawing Name:  
 PARTIAL MEZZANINE FLOOR PLAN - LIGHTING - AREA A

Project #: 12511  
 Drawn By: SMF  
 Date: 06 February 2014

Sheet Number:

**E1.21**





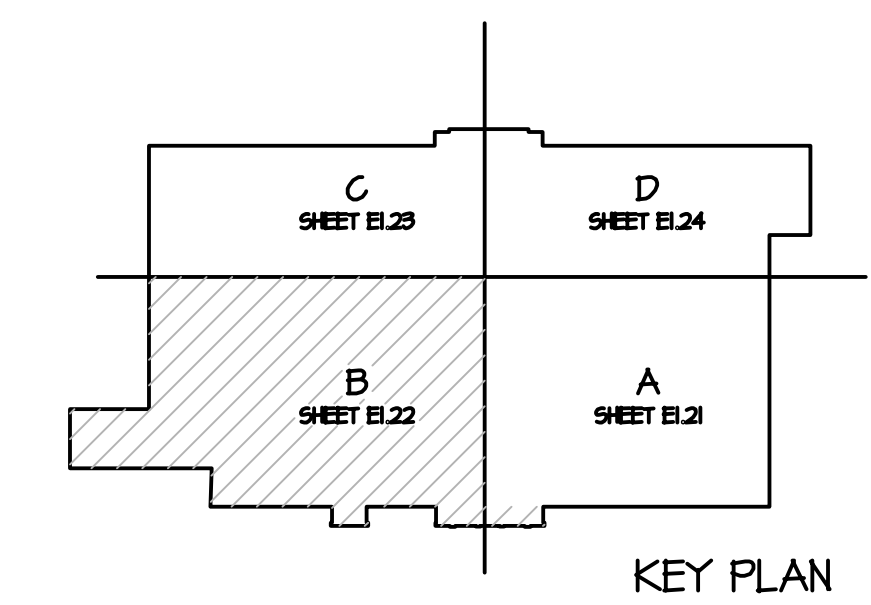
**GENERAL NOTES**

1. ALL LIGHT FIXTURES AND LAMPS ARE OWNER PROVIDED. INSTALLED BY ELECTRICAL CONTRACTOR.
2. ROUTE ALL CONDUIT AND WIRING AS HIGH AS ALLOWABLE AND CONCEAL FROM VIEW WHEN INSTALLED IN AREAS WITH EXPOSED STRUCTURE.
3. MINIMUM WIRE SIZE FOR 277V LIGHTING CIRCUITS SHALL BE #10 AWG.
4. PROVIDE A GREEN INSULATED GROUND WIRE IN ALL LIGHTING AND POWER BRANCH CIRCUITS.
5. PROVIDE A DEDICATED NEUTRAL CONDUCTOR FOR EACH BRANCH CIRCUIT. SHARED NEUTRALS ARE NOT ALLOWED UNLESS NOTED OTHERWISE.
6. SUBSCRIPT "N" INDICATES FIXTURE OR PORTION OF FIXTURE CONNECTED TO UNSWITCHED NIGHT LIGHTING CIRCUIT.
7. DO NOT MOUNT DEVICES BACK-TO-BACK.
8. EXPOSED BOX AND CONDUIT INSTALLATION SCHEDULE SHALL BE COORDINATED FOR PAINTING BY GENERAL CONTRACTOR. BOXES AND CONDUIT INSTALLED AFTER PAINTING BY GENERAL CONTRACTOR SHALL BE PAINTED BY ELECTRICIAN TO MATCH ADJACENT COLOR.

**FLAG NOTES**

- NOTE: FLAG NOTES ARE COMMON TO SHEETS E1.21, E1.22, E1.23, E1.24  
ALL FLAG NOTES MAY NOT BE USED ON EACH SHEET.
1. EMERGENCY LIGHTING TRANSFER SWITCH (CR) NINE 24. INC. CATALOG #BLTC-R-CI-277 (OR EQUAL). MOUNT IN ACCESSIBLE LOCATION CONCEALED FROM VIEW. INSTALL PER MANUFACTURER'S INSTRUCTIONS. ASSOCIATED EMERGENCY LIGHT FIXTURES INDICATED BY HATCH SHALL TURN "ON/OFF" VIA CONTROLS SERVING THIS AREA UNDER NORMAL OPERATING CONDITIONS. UPON LOSS OF NORMAL POWER EMERGENCY FIXTURES SHALL TURN "ON" AUTOMATICALLY VIA EMERGENCY LIGHTING TRANSFER SWITCH.
  2. CEILING MOUNTED DUAL TECHNOLOGY OCCUPANCY SENSOR. SQUARE D CATALOG #SLSCDS2000. SET SENSITIVITY AND TIME DELAY ACCORDING TO OWNER'S REQUIREMENTS. SEE TYPICAL OCCUPANCY SENSOR CONNECTION DETAIL.
  3. "AUTO ON/AUTO OFF" WALL SWITCH OCCUPANCY SENSOR. SQUARE D CATALOG #SLSPWS127AW. SET SENSITIVITY AND TIME DELAY ACCORDING TO OWNER'S REQUIREMENTS.
  4. "SQUARE D" SLSPFS1347 OCCUPANCY SENSOR AND LVSPSU0037RRU POWER SUPPLY. CONNECT SENSORS TO UNSWITCHED CIRCUIT INDICATED. PROVIDE SWIRE LOW VOLTAGE CONNECTION BETWEEN SENSORS AND FROM SENSORS TO POWERLINK BUS.
  5. CONNECT EXIT LIGHTS TO DEDICATED LOCKABLE CIRCUIT BREAKER.
  6. COORDINATE FINAL LOCATION OF LED DRIVERS SERVING ILLUMINATED SIGNAGE WITH ARCHITECTURAL PRIOR TO RIGGING. COORDINATE ADDITIONAL CONNECTION REQUIREMENTS WITH SIGN PACKAGE. ROUTE ALL WIRING IN CONDUIT. CONCEAL ALL CONDUIT, WIREWAYS, AND JUNCTION BOXES FROM VIEW.
  7. MOUNT LINEAR LED LIGHT FIXTURE WITHIN STOREFRONT DORMER WINDOW. COORDINATE FINAL LOCATION WITH ARCHITECTURAL ELEVATIONS AND SECTIONS.
  8. EXPOSED BOXES AND CONDUITS ARE NOT PERMITTED WITHIN AREA INDICATED BY DASHED LINE.
  9. MOUNT TRACK TO UNDERSIDE OF TRUSS. COORDINATE FINAL LOCATION WITH ARCHITECTURAL.
  10. PLC SENSORS. CES SERIES OUTDOOR PHOTOSENSOR FOR LC-8 CONTROLLER. PROVIDE A ONE-HUB ALUMINUM FS STYLE BOX WITH A ONE-HUB WEATHER-PROOF COVER. INSTALL PHOTOSENSOR IN COVER. PROVIDE A BELDEN CABLE 18/3 STRANDED. WIRING FROM PHOTOSENSOR TO LC-8 CONTROLLER.
  11. MOUNT BEACON BASE-UP. TO BOTTOM OF BAR JOIST.
  12. REVOLVING AMBER BEACON, EDWARDS CAT. NO. 52A NS 40WH.
  13. FOR EACH OCCUPANCY SENSOR ZONE, WHERE EMERGENCY AND NORMAL CIRCUITS ARE INDICATED TOGETHER, ROUTE EMERGENCY CIRCUIT VIA AN A.L.C.R. IN CABINET IN ELECTRICAL ROOM. NORMAL LIGHTING CIRCUIT INDICATED SHALL PROVIDE THE "REGULAR SWITCH HOT" AND "REGULAR CONSTANT HOT" TO CONTROL THE A.L.C.R. REFER TO "SQUARE D" A.L.C.R. WIRING DIAGRAM FOR ADDITIONAL INFORMATION.

**PARTIAL MEZZANINE FLOOR PLAN - LIGHTING - AREA B**



Seal:

Revisions:  
Permit Issue 10-03-13

Rev 4, CCD 2 02-06-14  
Rev 5, CCD 2 03-31-14

Drawing Name:  
PARTIAL MEZZANINE FLOOR PLAN - LIGHTING - AREA B

Project #: 12511  
Drawn By: SMF  
Date: 06 February 2014

Sheet Number:

**E1.22**

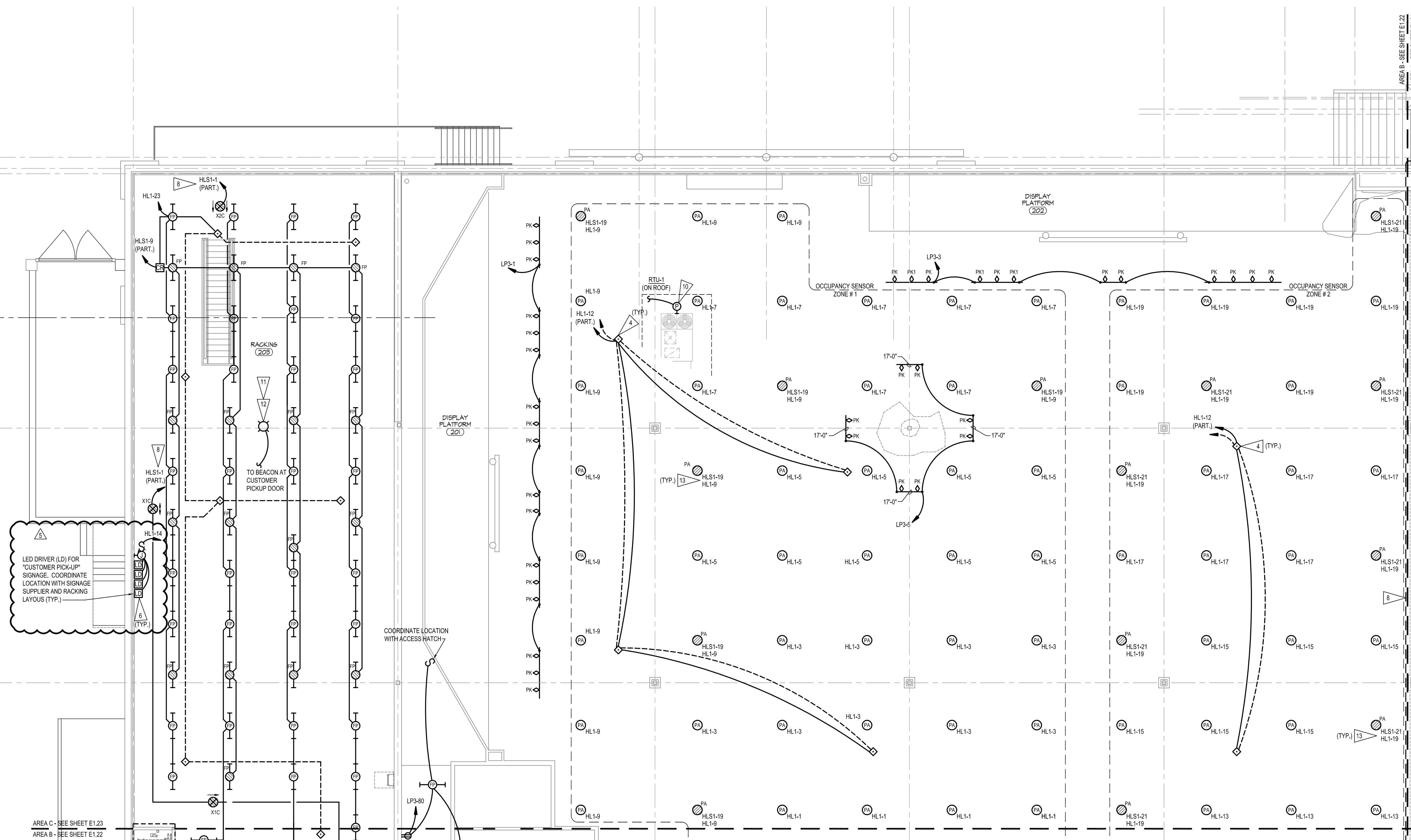


**GENERAL NOTES**

1. ALL LIGHT FIXTURES AND LAMPS ARE OWNER PROVIDED. INSTALLED BY ELECTRICAL CONTRACTOR.
2. ROUTE ALL CONDUIT AND WIRING AS HIGH AS ALLOWABLE AND CONCEAL FROM VIEW WHEN INSTALLED IN AREAS WITH EXPOSED STRUCTURE.
3. MINIMUM WIRE SIZE FOR 277V LIGHTING CIRCUITS SHALL BE #10 AWG.
4. PROVIDE A GREEN INSULATED GROUND WIRE IN ALL LIGHTING AND POWER BRANCH CIRCUITS.
5. PROVIDE A DEDICATED NEUTRAL CONDUCTOR FOR EACH BRANCH CIRCUIT. SHARED NEUTRALS ARE NOT ALLOWED UNLESS NOTED OTHERWISE.
6. SUBSCRIPT "N" INDICATES FIXTURE OR PORTION OF FIXTURE CONNECTED TO UNSWITCHED NIGHT LIGHTING CIRCUIT.
7. DO NOT MOUNT DEVICES BACK-TO-BACK.
8. EXPOSED BOX AND CONDUIT INSTALLATION SCHEDULE SHALL BE COORDINATED FOR PAINTING BY GENERAL CONTRACTOR. BOXES AND CONDUIT INSTALLED AFTER PAINTING BY GENERAL CONTRACTOR SHALL BE PAINTED BY ELECTRICIAN TO MATCH ADJACENT COLOR.

**FLAG NOTES**

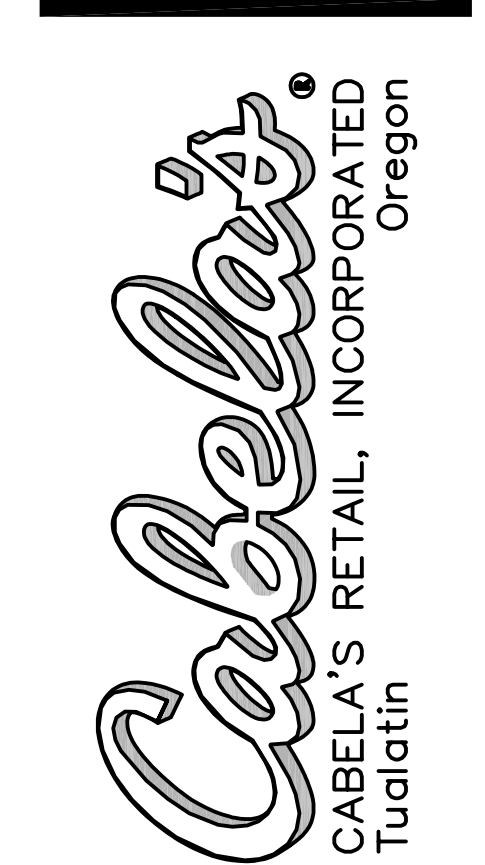
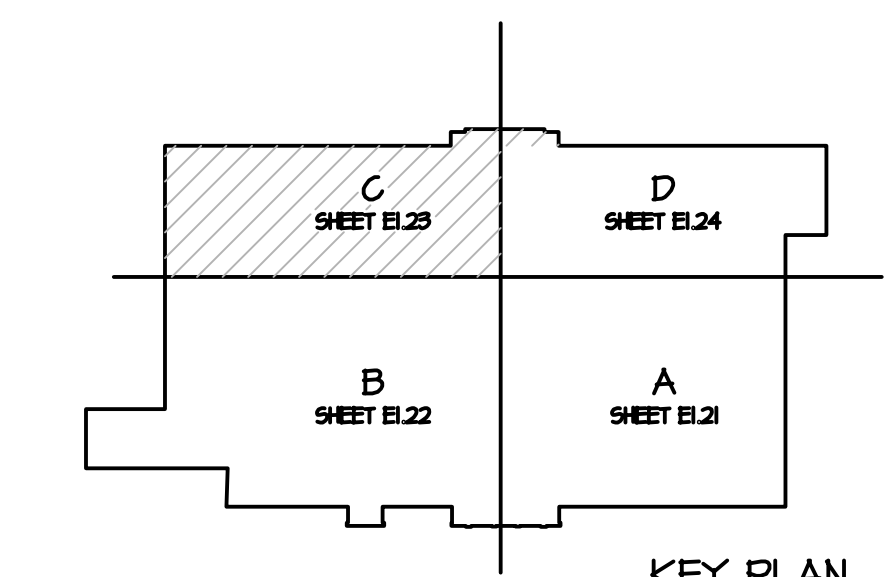
- NOTE: FLAG NOTES ARE COMMON TO SHEETS E1.21, E1.22, E1.23, E1.24  
ALL FLAG NOTES MAY NOT BE USED ON EACH SHEET.
1. EMERGENCY LIGHTING TRANSFER SWITCH (CR), NINE 24, INC. CATALOG #BLTC-RQ-277 (OR EQUAL). MOUNT IN ACCESSIBLE LOCATION CONCEALED FROM VIEW. INSTALL PER MANUFACTURER'S INSTRUCTIONS. ASSOCIATED EMERGENCY LIGHT FIXTURES INDICATED BY HATCH SHALL TURN "ON/OFF" VIA CONTROLS SERVING THIS AREA UNDER NORMAL OPERATING CONDITIONS. UPON LOSS OF NORMAL POWER EMERGENCY FIXTURES SHALL TURN "ON" AUTOMATICALLY VIA EMERGENCY LIGHTING TRANSFER SWITCH.
  2. CEILING MOUNTED DUAL TECHNOLOGY OCCUPANCY SENSOR, SQUARE D CATALOG #SLSCDS2000. SET SENSITIVITY AND TIME DELAY ACCORDING TO OWNER'S REQUIREMENTS. SEE TYPICAL OCCUPANCY SENSOR CONNECTION DETAIL.
  3. "AUTO ON/AUTO OFF" WALL SWITCH OCCUPANCY SENSOR, SQUARE D CATALOG #SLSPWS127AW. SET SENSITIVITY AND TIME DELAY ACCORDING TO OWNER'S REQUIREMENTS.
  4. "SQUARE D" SLSPFS1347 OCCUPANCY SENSOR AND LVSPSU0037RRU POWER SUPPLY. CONNECT SENSORS TO UNSWITCHED CIRCUIT INDICATED. PROVIDE SWIRE LOW VOLTAGE CONNECTION BETWEEN SENSORS AND FROM SENSORS TO POWERLINK BUS.
  5. CONNECT EXIT LIGHTS TO DEDICATED LOCKABLE CIRCUIT BREAKER.
  6. COORDINATE FINAL LOCATION OF LED DRIVERS SERVING ILLUMINATED SIGNAGE WITH ARCHITECTURAL PRIOR TO RIGGING. COORDINATE ADDITIONAL CONNECTION REQUIREMENTS WITH SIGN PACKAGE. ROUTE ALL WIRING IN CONDUIT. CONCEAL ALL CONDUIT, WIREWAYS, AND JUNCTION BOXES FROM VIEW.
  7. MOUNT LINEAR LED LIGHT FIXTURE WITHIN STOREFRONT DORMER WINDOW. COORDINATE FINAL LOCATION WITH ARCHITECTURAL ELEVATIONS AND SECTIONS.
  8. EXPOSED BOXES AND CONDUITS ARE NOT PERMITTED WITHIN AREA INDICATED BY DASHED LINE.
  9. MOUNT TRACK TO UNDERSIDE OF TRUSS. COORDINATE FINAL LOCATION WITH ARCHITECTURAL.
  10. PLC SENSORS, CES SERIES OUTDOOR PHOTOSENSOR FOR LC-8 CONTROLLER. PROVIDE A ONE-HUB ALUMINUM FS STYLE BOX WITH A ONE-HUB WEATHER-PROOF COVER. INSTALL PHOTOSENSOR IN COVER. PROVIDE A BELDEN CABLE, 18/3 STRANDED, W/GROUND FROM PHOTOSENSOR TO LC-8 CONTROLLER.
  11. MOUNT BEACON BASE-UP, TO BOTTOM OF BAR JOIST.
  12. REVOLVING AMBER BEACON, EDWARDS CAT. NO. 52A NS 40WH.
  13. FOR EACH OCCUPANCY SENSOR ZONE, WHERE EMERGENCY AND NORMAL CIRCUITS ARE INDICATED TOGETHER, ROUTE EMERGENCY CIRCUIT VIA AN A.L.C.R. IN CABINET IN ELECTRICAL ROOM. NORMAL LIGHTING CIRCUIT INDICATED SHALL PROVIDE THE "REGULAR SWITCH HOT" AND "REGULAR CONSTANT HOT" TO CONTROL THE A.L.C.R. REFER TO "SQUARE D" A.L.C.R. WIRING DIAGRAM FOR ADDITIONAL INFORMATION.



LED DRIVER (LD) FOR CUSTOMER PICKUP SIGNAGE. COORDINATE LOCATION WITH SIGNAGE SUPPLIER AND RACKING LAYOUTS (TYP.)

AREA C - SEE SHEET E1.23  
AREA B - SEE SHEET E1.22

**PARTIAL MEZZANINE FLOOR PLAN - LIGHTING - AREA C**



HOLLAND BASHAM ARCHITECTS  
100 SOUTH 40th AVENUE  
OMAHA, NEBRASKA 68132  
(402) 551-0800



MORRISSEY engineering inc.  
mechanical | electrical | technology | commissioning  
4400 Westgate Street  
Portland, OR 97221  
P: 503.471.4144  
www.morrisseyengineering.com

**Cabela's Retail Center**  
Tualatin, Oregon

Seal:

Revisions:  
Permit Issue 10-03-13

Rev 4, CCD 2 02-06-14  
Rev 5, CCD 3 03-31-14

Drawing Name:  
**PARTIAL MEZZANINE FLOOR PLAN - LIGHTING - AREA C**

Project #: 12511  
Drawn By: SMF  
Date: 06 February 2014

Sheet Number:

**E1.23**



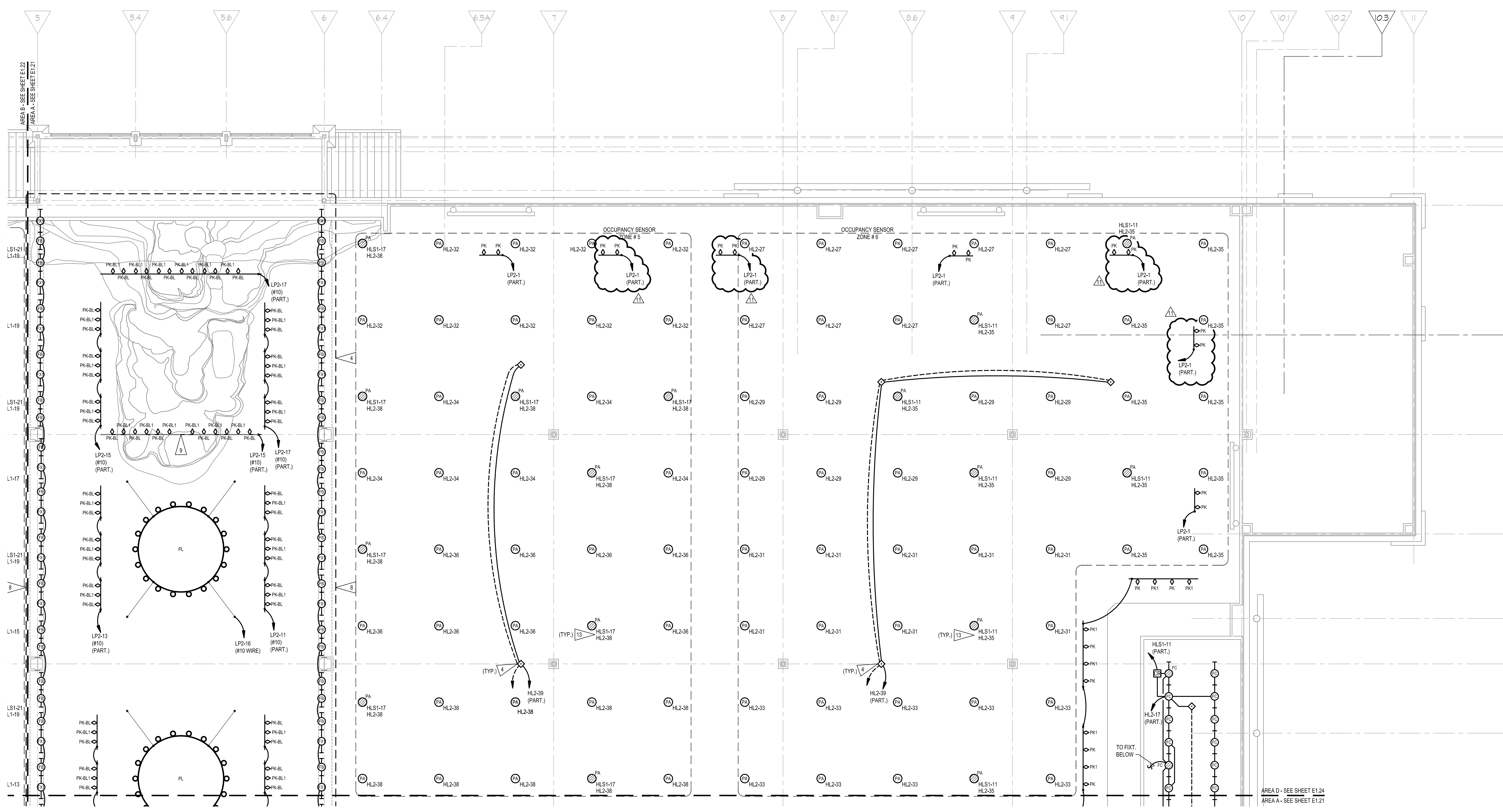
**GENERAL NOTES**

1. ALL LIGHT FIXTURES AND LAMPS ARE OWNER PROVIDED, INSTALLED BY ELECTRICAL CONTRACTOR.
2. ROUTE ALL CONDUIT AND WIRING AS HIGH AS ALLOWABLE AND CONCEAL FROM VIEW WHEN INSTALLED IN AREAS WITH EXPOSED STRUCTURE.
3. MINIMUM WIRE SIZE FOR 277V LIGHTING CIRCUITS SHALL BE #10 AWG.
4. PROVIDE A GREEN INSULATED GROUND WIRE IN ALL LIGHTING AND POWER BRANCH CIRCUITS.
5. PROVIDE A DEDICATED NEUTRAL CONDUCTOR FOR EACH BRANCH CIRCUIT. SHARED NEUTRALS ARE NOT ALLOWED UNLESS NOTED OTHERWISE.
6. SUBSCRIPT "N" INDICATES FIXTURE OR PORTION OF FIXTURE CONNECTED TO UNSWITCHED NIGHT LIGHTING CIRCUIT.
7. DO NOT MOUNT DEVICES BACK-TO-BACK.
8. EXPOSED BOX AND CONDUIT INSTALLATION SCHEDULE SHALL BE COORDINATED FOR PAINTING BY GENERAL CONTRACTOR. BOXES AND CONDUIT INSTALLED AFTER PAINTING BY GENERAL CONTRACTOR SHALL BE PAINTED BY ELECTRICIAN TO MATCH ADJACENT COLOR.

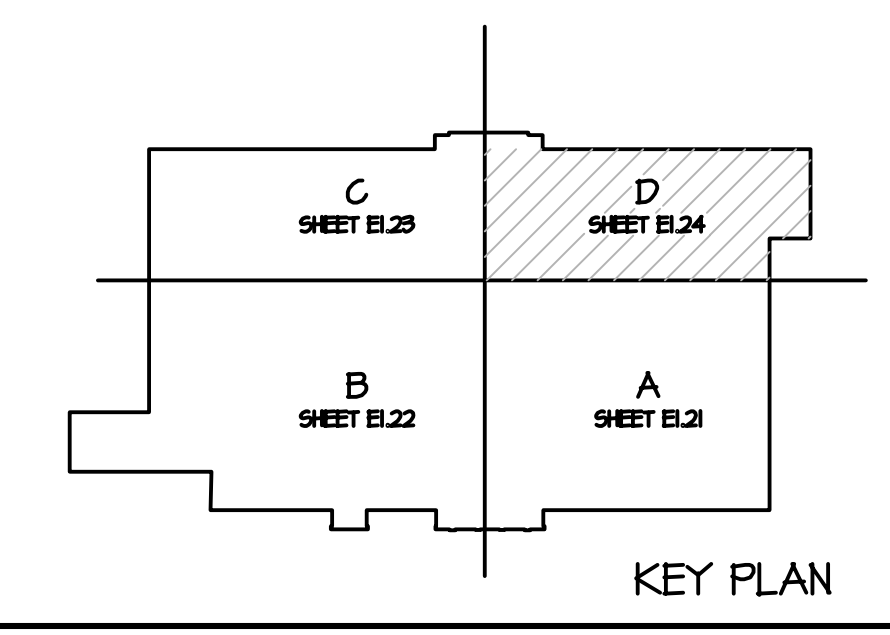
**FLAG NOTES**

NOTE: FLAG NOTES ARE COMMON TO SHEETS E1.21, E1.22, E1.23, E1.24  
ALL FLAG NOTES MAY NOT BE USED ON EACH SHEET.

1. EMERGENCY LIGHTING TRANSFER SWITCH (ERT), NINE 24, INC. CATALOG #BLT-CI-277 (OR EQUAL), MOUNT IN ACCESSIBLE LOCATION CONCEALED FROM VIEW. INSTALL PER MANUFACTURER'S INSTRUCTIONS. ASSOCIATED EMERGENCY LIGHT FIXTURES INDICATED BY HATCH SHALL TURN "ON/OFF" VIA CONTROLS SERVING THIS AREA UNDER NORMAL OPERATING CONDITIONS. UPON LOSS OF NORMAL POWER EMERGENCY FIXTURES SHALL TURN "ON" AUTOMATICALLY VIA EMERGENCY LIGHTING TRANSFER SWITCH.
2. CEILING MOUNTED DUAL TECHNOLOGY OCCUPANCY SENSOR, SQUARE D CATALOG #LSFWS1277AW. SET SENSITIVITY AND TIME DELAY ACCORDING TO OWNER'S REQUIREMENTS. SEE TYPICAL OCCUPANCY SENSOR CONNECTION DETAIL.
3. \*AUTO ON/AUTO OFF\* WALL SWITCH OCCUPANCY SENSOR, SQUARE D CATALOG #LSFWS1277AW. SET SENSITIVITY AND TIME DELAY ACCORDING TO OWNER'S REQUIREMENTS.
4. SQUARE D SLSFWS1347 OCCUPANCY SENSOR AND LVSPSU0037RRU POWER SUPPLY. CONNECT SENSORS TO UNSWITCHED CIRCUIT INDICATED. PROVIDE 3WIRE LOW VOLTAGE CONNECTION BETWEEN SENSORS AND FROM SENSORS TO POWERLINK BUS.
5. CONNECT EXIT LIGHTS TO DEDICATED LOCKABLE CIRCUIT BREAKER.
6. COORDINATE FINAL LOCATION OF LED DRIVERS SERVING ILLUMINATED SIGNAGE WITH ARCHITECTURAL PRIOR TO ROUGH-IN. COORDINATE ADDITIONAL CONNECTION REQUIREMENTS WITH SIGN PACKAGE. ROUTE ALL WIRING IN CONDUIT. CONCEAL ALL CONDUIT, WIREWAYS, AND JUNCTION BOXES FROM VIEW.
7. MOUNT LINEAR LED LIGHT FIXTURE WITH STOREFRONT DORMER WINDOW. COORDINATE FINAL LOCATION WITH ARCHITECTURAL ELEVATIONS AND SECTIONS.
8. EXPOSED BOXES AND CONDUITS ARE NOT PERMITTED WITHIN AREA INDICATED BY DASHED LINE.
9. MOUNT TRACK TO UNDERSIDE OF TRUSS. COORDINATE FINAL LOCATION WITH ARCHITECTURAL.
10. PLC SENSORS, CES SERIES OUTDOOR PHOTOSENSOR FOR LC-8 CONTROLLER. PROVIDE A ONE-HUB ALUMINUM FS STYLE BOX WITH A ONE-HUB WEATHER-PROOF COVER. INSTALL PHOTOSENSOR IN COVER. PROVIDE A BELDEN CABLE, 183 STRANDED, WIRGOUND FROM PHOTOSENSOR TO LC-8 CONTROLLER.
11. MOUNT BEACON BASE-UP, TO BOTTOM OF BAR JOIST.
12. REVOLVING AMBER BEACON, EDWARDS CAT. NO. 52A N5 40WH.
13. FOR EACH OCCUPANCY SENSOR ZONE, WHERE EMERGENCY AND NORMAL CIRCUITS ARE INDICATED TOGETHER, ROUTE EMERGENCY CIRCUIT VIA AN ALL C.R. IN CABINET IN ELECTRICAL ROOM. NORMAL LIGHTING CIRCUIT INDICATED SHALL PROVIDE THE "REGULAR SWITCH HOT" AND "REGULAR CONSTANT HOT" TO CONTROL THE A.L.C.R. REFER TO "SQUARE D" A.L.C.R. WIRING DIAGRAM FOR ADDITIONAL INFORMATION.



**PARTIAL MEZZANINE FLOOR PLAN - LIGHTING - AREA D**



Seat:

Revisions:

Rev 11, OCD 9 07-31-14

Drawing Name: PARTIAL MEZZANINE FLOOR PLAN - LIGHTING - AREA D

Project #: 12511  
Drawn By: SMF  
Date: 06 February 2014

Sheet Number:

**E1.24**



