



**CONSUMERS POWER INC.**

P.O. BOX 1180  
6990 WEST HILLS ROAD  
PHILOMATH, OR 97370

(541) 929-3124 • (800) 872-9036

2161 1 AB 0.416  
ALSEA RURAL HEALTH CARE  
PO BOX 579  
CORVALLIS OR 97339-0579

4 2161  
C-7 P-9

Account Number 5309701

Statement Date 01/04/2021

Due Date 01/25/2021

**Billing Summary**

LAST MONTH'S BILL	\$297.00
PAYMENTS - THANK YOU	<u>\$297.00</u> CR
BALANCE FORWARD	\$0.00
Current Charges	\$201.34
Low Income Assistance	\$0.05
Operation Round Up Amount	\$0.61

**Account Balance \$202.00**



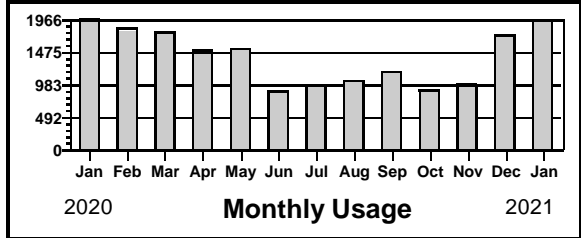
**Any BALANCE FORWARD is subject to DISCONNECTION of services.**

**Messages**

Winter is in full swing and the cold temperatures will be reflected in the costs needed to heat your home. One of the most effective ways to lower your bill is by insulating your house. Do you know how much insulation you have? CPI offers an insulation rebate program to help you stay on top of your energy costs. Give us a call or visit us online for more information.

**Location 435 E ALDER ST-MEDICAL FACILITY - GENERAL SERVICE**

Meter	From	Through	Days	Type	End Read	Start Read	Mult	Usage	Code	Rate
18363	11/25/20	12/25/20	30	KWH	39956	38001	1	1955		006
18363	11/25/20	12/25/20	30	KW	21.504		1	21.504		006



**Detail of Charges - Electric**

Basic Service Charge	\$25.00
KWH Revenue	<u>\$176.34</u>
<b>Total This Service</b>	<b>\$201.34</b>

Average KWH per Day: 65  
This Month Last Year: 66

Please Return This Stub With Your Payment Please do not staple or paperclip

Comments: \_\_\_\_\_

Cycle: 01

Account:	5309701
Due Date for Current Bill:	01/25/2021
Amount Due:	\$202.00
Amount Paying	_____



One-Time Operation Roundup Donation:

\$ \_\_\_\_\_

ALSEA RURAL HEALTH CARE  
PO BOX 579  
CORVALLIS OR 97339-0000

CONSUMERS POWER, INC.  
PO BOX 1180  
PHILOMATH OR 97370-1180



## INFORMATION ABOUT YOUR BILL

If you have a concern or question please call us at (541) 929-3124 or (800) 872-9036, 7 - 5:30 Monday thru Thursday, Closed on Friday. In case of emergencies, our 24 hour answering service will take your call.

### HOW YOU CAN PAY YOUR BILL:

- **AUTOMATIC BANK WITHDRAWAL** call for information
- **BY MAIL** to P.O. BOX 1180, Philomath, OR 97370
- **IN OUR OFFICE** in person, drive-up window, or use our night-deposit box at:  
6990 West Hills Road, Philomath  
1900 W Oak Street, Lebanon
- **BY PHONE - CHECKS OR CREDIT CARD** call our AUTOMATED SERVICE 24/7 or call our Business Office between 7 - 5:30 Monday thru Thursday, Closed on Friday
- **BY CREDIT CARD** use form on back of remittance stub or call
- **EBILL** receive and pay your bill online at [www.cpi.coop](http://www.cpi.coop)
- **IN PERSON** at our neighborhood drop boxes:

#### ALBANY

Postal Connections

#### ALSEA

John Boy's Alsea Mercantile

**IMPORTANT REMINDER! If your payment is late or past due, please pay at our CPI office in Philomath or Lebanon. Don't make payments in drop boxes if late or past due.**

**KWH - KILOWATT HOUR** - Your meter measures your electric usage in kilowatt hours. You will use 1 kilowatt hour when you use ten 100 watt light bulbs for one hour, or one 100 watt bulb for 10 hours.

**BASIC SERVICE CHARGE** - A monthly charge for costs of service that occur regardless of energy use. Includes the average cost for meter reading, billing and some maintenance on electric lines and meters.

#### CODES

A Annual	I Inactive	R Line Retention
E Estimate	N New Connect	T Meter Change
F Final	P Prorate	

***Consumers Power - committed to excellence in electric service.***

### Credit Card Payment Options:

Please charge this to:

Visa       MasterCard       Discover       American Express

--	--	--	--	--	--	--	--	--	--	--	--	--	--	--	--	--	--	--	--

Credit Card #

--	--	--	--

Validation Code  
(last 3 or 4 numbers on  
the signature side of card)

I would like to pay my bill by credit card each month.

Signature \_\_\_\_\_

Expiration Month/Year \_\_\_\_\_



CONSUMERS POWER INC.

Office Hours: Monday - Thursday 7:00 a.m. to 5:30 p.m.  
 Contact us: 541-929-3124 or 1-800-872-9036 Hours: 24/7  
[www.cpi.coop](http://www.cpi.coop)

**Member Name:** ALSEA RURAL HEALTH CARE  
**Account #:** 5309701  
**Statement Date:** 02/01/2021

**TOTAL AMOUNT DUE**

# \$230.00

**DUE DATE 02/25/21**

**Member Monthly Message**

Looking to pay your bill online, use your smart phone or tablet to check on your daily or monthly power usage, or send us a message? Check out SmartHub, CPI's online member customer portal, to access all of this information and more. You can download the app in the Apple App Store or in Google Play, or visit us online at [www.cpi.coop](http://www.cpi.coop).

**Previous Account Activity**

Previous Balance	\$202.00
Payments Received - Thank You	-\$202.00
<b>Balance Before Current Charges</b>	<b>\$0.00</b>
<b>Account Balance</b>	<b>\$230.00</b>

**YTD Round Up Amount: \$1.26**

Rate Description: **GENERAL SERVICE**

Service Address: **435 E ALDER ST-MEDICAL FACILITY**

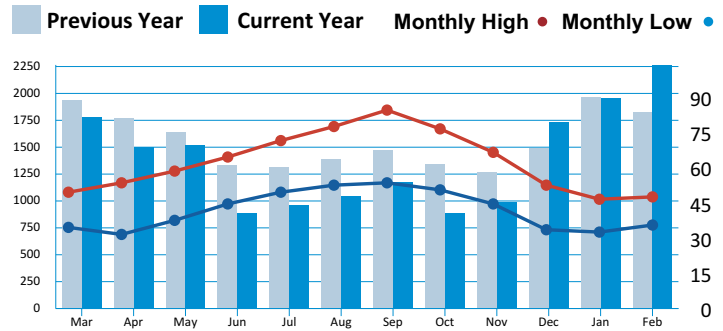
Meter #	Type	Days	Services		Readings		Metered Usage	Meter Multiplier	Rate
			From	To	Previous	Present			
18363	KWH	31	12/25/2020	01/25/2021	39956	42221	2265	1	006
18363	KW	31	12/25/2020	01/25/2021	0	21.388	21.388	1	006

**Current Activity**

Basic Service Charge		\$25.00
KWH Revenue	2,265 kWh @ .0902	\$204.30
Operation Round Up Amount		\$0.65
Low Income Assistance		\$0.05
<b>Total Current Activity</b>		<b>\$230.00</b>

**Usage History**

**Temp**



COMPARISONS	Days	kWh	Avg Temp	Avg kWh
Current Month	31	2265	43	73
Previous Month	30	1955	42	65
Same Last Year	31	1830	43	59

Avg Cost Per Day: \$7.40

**Any BALANCE FORWARD is subject to DISCONNECTION of services.**

Please return this stub with your payment. Please do not staple, paperclip, or tape.



CONSUMERS POWER INC.  
 P.O. BOX 1180  
 6990 WEST HILLS ROAD  
 PHILOMATH, OR 97370

**ACCOUNT #** 5309701  
**SERVICE ADDRESS:** 435 E ALDER ST-MEDICAL FACILITY

**Total Due: \$230.00**  
**Payment is due by 02/25/21**



**One-Time Operation Roundup Donation:**

\$ \_\_\_\_\_

1693 1 AB 0.425  
 ALSEA RURAL HEALTH CARE  
 PO BOX 579  
 CORVALLIS OR 97339-0579

5 1693  
 C-7 P-10

CONSUMERS POWER, INC.  
 PO BOX 1180  
 PHILOMATH OR 97370-1180



00000530970100000230003

## **DROP BOX LOCATIONS:**

**Philomath** - CPI Office

**Lebanon** - CPI Office

**Albany** - Postal Connections

**Alsea** - John Boy's Mercantile

## **POWER OUTAGES:**

Check your fuses and breakers to ensure the problem is not within your electrical system.

If you have determined there is an outage, report it by calling 541-929-3124, 1-800-872-9036, 24/7, by using CPI's SmartHub app, or your online account.

Stay away from downed power lines and **DO NOT TOUCH** them!



**CONSUMERS POWER INC.**

**YOUR CLEAN & RELIABLE POWER PROVIDER**

- 97% EMISSIONS-FREE POWER, ALL DAY EVERY DAY
- LOW COST, 100% RENEWABLE OPTION OFFERED
- ENERGY SAVING REBATE PROGRAMS AVAILABLE
- MULTIPLE BILL PAYMENT OPTIONS AVAILABLE

**SERVING OUR MEMBERS BY PROVIDING SAFE AND RELIABLE POWER**

### **Other Ways to Pay Your Bill**



#### **Online**

Pay your bill at  
[cpi.coop](http://cpi.coop)



#### **Phone**

Call 541-929-3124  
or 800-872-9036  
to speak with us



#### **Mobile App**

Download the SmartHub app  
on iTunes or Google Play Store



#### **In-Person**

6990 West Hills Rd  
Philomath, OR 97370

#### **Lebanon Office**

1900 Oak St  
Lebanon, OR 97355



CONSUMERS POWER INC.

Office Hours: Monday - Thursday 7:00 a.m. to 5:30 p.m.  
 Contact us: 541-929-3124 or 1-800-872-9036 Hours: 24/7  
[www.cpi.coop](http://www.cpi.coop)

**Member Name:** ALSEA RURAL HEALTH CARE  
**Account #:** 5309701  
**Statement Date:** 03/01/2021

**TOTAL AMOUNT DUE**

**\$466.00**

**BALANCE FORWARD \$230.00 DUE NOW**

**Member Monthly Message**

Spring is in the air! With nicer weather on the horizon you can focus on those outside projects. Be sure to look up while working with ladders or trees and before you start any digging call 811 for a free utility locate.

<b>Previous Account Activity</b>	
Previous Balance	\$230.00
No Payments Made	\$0.00
<b>Balance Before Current Charges</b>	<b>\$230.00</b>
<b>Account Balance</b>	<b>\$466.00</b>

**YTD Round Up Amount: \$1.95**

Rate Description: GENERAL SERVICE

Service Address: 435 E ALDER ST-MEDICAL FACILITY

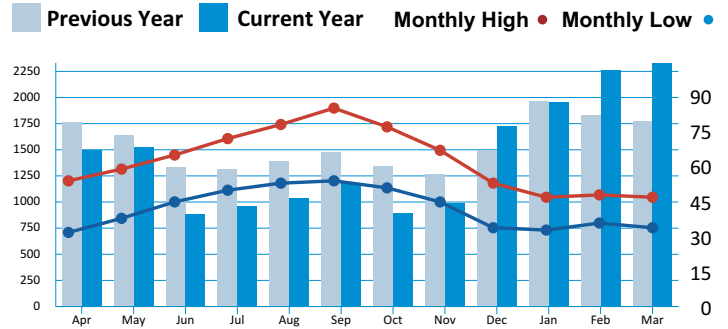
Meter #	Type	Days	Services		Readings		Metered Usage	Meter Multiplier	Rate
			From	To	Previous	Present			
18363	KWH	30	01/25/2021	02/24/2021	42221	44552	2331	1	006
18363	KW	30	01/25/2021	02/24/2021	0	17.26	17.260	1	006

**Current Activity**

Basic Service Charge		\$25.00
KWH Revenue	2,331 kWh @ .0902	\$210.26
Operation Round Up Amount		\$0.69
Low Income Assistance		\$0.05
<b>Total Current Activity</b>		<b>\$236.00</b>

**Usage History**

**Temp**



COMPARISONS	Days	kWh	Avg Temp	Avg kWh
Current Month	30	2331	42	78
Previous Month	31	2265	43	73
Same Last Year	31	1776	44	57

Avg Cost Per Day: \$7.84

**Any BALANCE FORWARD is subject to DISCONNECTION of services.**

Please return this stub with your payment. Please do not staple, paperclip, or tape.



CONSUMERS POWER INC.  
 P.O. BOX 1180  
 6990 WEST HILLS ROAD  
 PHILOMATH, OR 97370

**ACCOUNT #** 5309701  
**SERVICE ADDRESS:** 435 E ALDER ST-MEDICAL FACILITY

**Total Due: \$466.00**  
 Payment is due by 03/25/21



**One-Time Operation Roundup Donation:**

\$ \_\_\_\_\_

1675 1 AB 0.425  
 ALSEA RURAL HEALTH CARE  
 PO BOX 579  
 CORVALLIS OR 97339-0579

5 1675  
 C-5 P-11

CONSUMERS POWER, INC.  
 PO BOX 1180  
 PHILOMATH OR 97370-1180



00000530970100000466003

## **DROP BOX LOCATIONS:**

**Philomath** - CPI Office

**Lebanon** - CPI Office

**Albany** - Postal Connections

**Alsea** - John Boy's Mercantile

## **POWER OUTAGES:**

Check your fuses and breakers to ensure the problem is not within your electrical system.

If you have determined there is an outage, report it by calling 541-929-3124, 1-800-872-9036, 24/7, by using CPI's SmartHub app, or your online account.

Stay away from downed power lines and **DO NOT TOUCH** them!



**CONSUMERS POWER INC.**

**YOUR CLEAN & RELIABLE POWER PROVIDER**

- 97% EMISSIONS-FREE POWER, ALL DAY EVERY DAY
- LOW COST, 100% RENEWABLE OPTION OFFERED
- ENERGY SAVING REBATE PROGRAMS AVAILABLE
- MULTIPLE BILL PAYMENT OPTIONS AVAILABLE

**SERVING OUR MEMBERS BY PROVIDING SAFE AND RELIABLE POWER**

### **Other Ways to Pay Your Bill**



#### **Online**

Pay your bill at  
[cpi.coop](http://cpi.coop)



#### **Phone**

Call 541-929-3124  
or 800-872-9036  
to speak with us



#### **Mobile App**

Download the SmartHub app  
on iTunes or Google Play Store



#### **In-Person**

6990 West Hills Rd  
Philomath, OR 97370

#### **Lebanon Office**

1900 Oak St  
Lebanon, OR 97355



CONSUMERS POWER INC.

Office Hours: Monday - Thursday 7:00 a.m. to 5:30 p.m.  
 Contact us: 541-929-3124 or 1-800-872-9036 Hours: 24/7  
[www.cpi.coop](http://www.cpi.coop)

**Member Name:** ALSEA RURAL HEALTH CARE  
**Account #:** 5309701  
**Statement Date:** 04/01/2021

**TOTAL AMOUNT DUE**

# \$192.00

**DUE DATE 04/25/21**

**Member Monthly Message**

Did you know that about 20% of your average usage comes from your inefficient electric water heater? Time to stop wasting money and start saving with an electric heat pump water heater. Heat pump water heaters can use up to 60% less power than a standard electric water heater. Plus you can get a \$600 rebate for doing it! Visit us online or give us a call for more information.

Previous Account Activity	
Previous Balance	\$466.00
Payments Received - Thank You	-\$466.00
<b>Balance Before Current Charges</b>	<b>\$0.00</b>
<b>Account Balance</b>	<b>\$192.00</b>

**YTD Round Up Amount: \$2.66**

Rate Description: GENERAL SERVICE

Service Address: 435 E ALDER ST-MEDICAL FACILITY

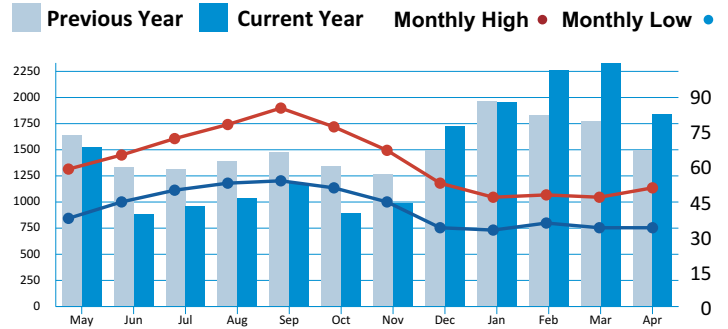
Meter #	Type	Days	Services		Readings		Metered Usage	Meter Multiplier	Rate
			From	To	Previous	Present			
18363	KWH	29	02/24/2021	03/25/2021	44552	46395	1843	1	006
18363	KW	29	02/24/2021	03/25/2021	0	20.745	20.745	1	006

**Current Activity**

Basic Service Charge		\$25.00
KWH Revenue	1,843 kWh @ .0902	\$166.24
Operation Round Up Amount		\$0.71
Low Income Assistance		\$0.05
<b>Total Current Activity</b>		<b>\$192.00</b>

**Usage History**

**Temp**



COMPARISONS	Days	kWh	Avg Temp	Avg kWh
Current Month	29	1843	44	64
Previous Month	30	2331	42	78
Same Last Year	25	1501	44	60

Avg Cost Per Day: \$6.59

**Any BALANCE FORWARD is subject to DISCONNECTION of services.**

Please return this stub with your payment. Please do not staple, paperclip, or tape.



CONSUMERS POWER INC.  
 P.O. BOX 1180  
 6990 WEST HILLS ROAD  
 PHILOMATH, OR 97370

**ACCOUNT #** 5309701  
**SERVICE ADDRESS:** 435 E ALDER ST-MEDICAL FACILITY

**Total Due: \$192.00**  
**Payment is due by 04/25/21**



**One-Time Operation Roundup Donation:**

\$ \_\_\_\_\_

1681 1 AB 0.425  
 ALSEA RURAL HEALTH CARE  
 PO BOX 579  
 CORVALLIS OR 97339-0579

5 1681  
 C-5 P-11

CONSUMERS POWER, INC.  
 PO BOX 1180  
 PHILOMATH OR 97370-1180



00000530970100000192005

## **DROP BOX LOCATIONS:**

**Philomath** - CPI Office

**Lebanon** - CPI Office

**Albany** - Postal Connections

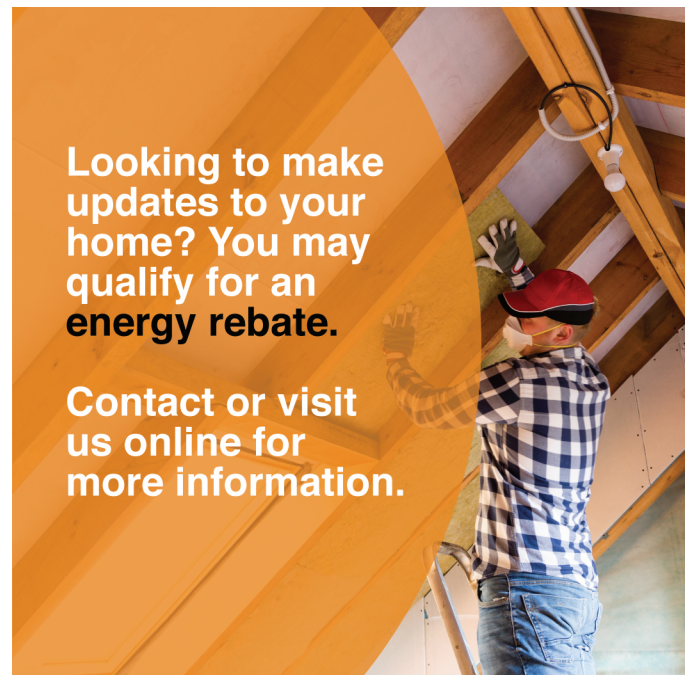
**Alsea** - John Boy's Mercantile

## **POWER OUTAGES:**

Check your fuses and breakers to ensure the problem is not within your electrical system.

If you have determined there is an outage, report it by calling 541-929-3124, 1-800-872-9036, 24/7, by using CPI's SmartHub app, or your online account.

Stay away from downed power lines and **DO NOT TOUCH** them!



Looking to make updates to your home? You may qualify for an energy rebate.

Contact or visit us online for more information.

### **Other Ways to Pay Your Bill**



#### **Online**

Pay your bill at [cpi.coop](http://cpi.coop)



#### **Phone**

Call 541-929-3124 or 800-872-9036 to speak with us



#### **Mobile App**

Download the SmartHub app on iTunes or Google Play Store



#### **In-Person**

6990 West Hills Rd  
Philomath, OR 97370

#### **Lebanon Office**

1900 Oak St  
Lebanon, OR 97355





CONSUMERS POWER INC.

Office Hours: Monday - Thursday 7:00 a.m. to 5:30 p.m.  
 Contact us: 541-929-3124 or 1-800-872-9036 Hours: 24/7  
[www.cpi.coop](http://www.cpi.coop)

Member Name: **ALSEA RURAL HEALTH CARE**  
 Account #: **5309701**  
 Statement Date: **05/03/2021**

**TOTAL AMOUNT DUE**

**\$353.00**

**BALANCE FORWARD \$192.00 DUE NOW**

**Member Monthly Message**

May is Electric Safety Month. As a reminder as your work on some outdoor chores be sure to look up. The leading cause of accidental power line contact in Oregon is tree trimming and removal. Rather than risk serious injury or death please give us a call at 800-872-9036 so we can come take a look for free. CPI's office will be closed May 31 for Memorial Day.

Previous Account Activity	
Previous Balance	\$192.00
No Payments Made	\$0.00
<b>Balance Before Current Charges</b>	<b>\$192.00</b>
<b>Account Balance</b>	<b>\$353.00</b>

**YTD Round Up Amount: \$3.31**

Rate Description: **GENERAL SERVICE**

Service Address: **435 E ALDER ST-MEDICAL FACILITY**

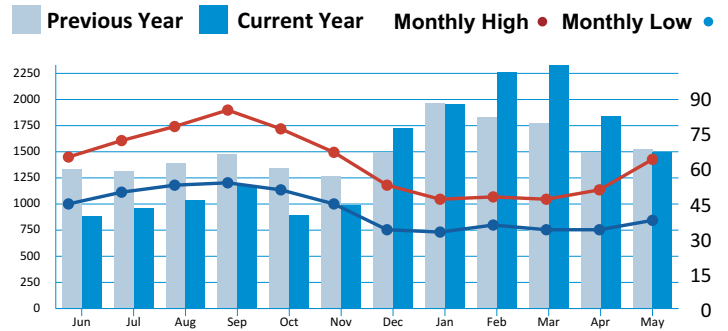
Meter #	Type	Days	Services		Readings		Metered Usage	Meter Multiplier	Rate
			From	To	Previous	Present			
18363	KWH	31	03/25/2021	04/25/2021	46395	47895	1500	1	006
18363	KW	31	03/25/2021	04/25/2021	0	16.886	16.886	1	006

**Current Activity**

Basic Service Charge		\$25.00
KWH Revenue	1,500 kWh @ .0902	\$135.30
Operation Round Up Amount		\$0.65
Low Income Assistance		\$0.05
<b>Total Current Activity</b>		<b>\$161.00</b>

**Usage History**

**Temp**



COMPARISONS	Days	kWh	Avg Temp	Avg kWh
Current Month	31	1500	52	48
Previous Month	29	1843	44	64
Same Last Year	35	1523	50	44

Avg Cost Per Day: \$5.17

**Any BALANCE FORWARD is subject to DISCONNECTION of services.**

Please return this stub with your payment. Please do not staple, paperclip, or tape.



CONSUMERS POWER INC.  
 P.O. BOX 1180  
 6990 WEST HILLS ROAD  
 PHILOMATH, OR 97370

**ACCOUNT # 5309701**  
**SERVICE ADDRESS: 435 E ALDER ST-MEDICAL FACILITY**

**Total Due: \$353.00**  
**Payment is due by 05/25/21**



**One-Time Operation Roundup Donation:**

\$ \_\_\_\_\_

1684 1 AB 0.425  
 ALSEA RURAL HEALTH CARE  
 PO BOX 579  
 CORVALLIS OR 97339-0579

5 1684  
 C-5 P-11

CONSUMERS POWER, INC.  
 PO BOX 1180  
 PHILOMATH OR 97370-1180



00000530970100000353003

## **DROP BOX LOCATIONS:**

**Philomath** - CPI Office

**Lebanon** - CPI Office

**Albany** - Postal Connections

**Alsea** - John Boy's Mercantile

## **POWER OUTAGES:**

Check your fuses and breakers to ensure the problem is not within your electrical system.

If you have determined there is an outage, report it by calling 541-929-3124, 1-800-872-9036, 24/7, by using CPI's SmartHub app, or your online account.

Stay away from downed power lines and **DO NOT TOUCH** them!



**811** KNOW WHAT'S BELOW.  
CALL BEFORE YOU DIG.

### **Other Ways to Pay Your Bill**



#### **Online**

Pay your bill at  
[cpi.coop](http://cpi.coop)



#### **Phone**

Call 541-929-3124  
or 800-872-9036  
to speak with us



#### **Mobile App**

Download the SmartHub app  
on iTunes or Google Play Store



#### **In-Person**

6990 West Hills Rd  
Philomath, OR 97370

#### **Lebanon Office**

1900 Oak St  
Lebanon, OR 97355



CONSUMERS POWER INC.

Office Hours: Monday - Thursday 7:00 a.m. to 5:30 p.m.  
 Contact us: 541-929-3124 or 1-800-872-9036 Hours: 24/7  
[www.cpi.coop](http://www.cpi.coop)

**Member Name:** ALSEA RURAL HEALTH CARE  
**Account #:** 5309701  
**Statement Date:** 06/01/2021

**TOTAL AMOUNT DUE**

**\$112.00**

**DUE DATE 06/25/21**

**Member Monthly Message**

If you are working on a home improvement project be sure to give us a call or visit us online to see if we offer a rebate. CPI offers rebates on everything from new windows to heat pumps and water heaters.  
[www.cpi.coop/rebates](http://www.cpi.coop/rebates)

**Previous Account Activity**

Previous Balance	\$353.00
Payments Received - Thank You	-\$353.00
<b>Balance Before Current Charges</b>	<b>\$0.00</b>
<b>Account Balance</b>	<b>\$112.00</b>

**YTD Round Up Amount: \$4.12**

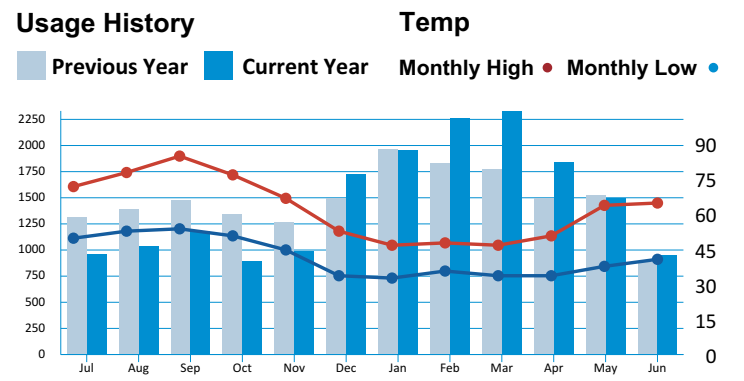
Rate Description: **GENERAL SERVICE**

Service Address: **435 E ALDER ST-MEDICAL FACILITY**

Meter #	Type	Days	Services		Readings		Metered Usage	Meter Multiplier	Rate
			From	To	Previous	Present			
18363	KWH	29	04/25/2021	05/24/2021	47895	48850	955	1	006
18363	KW	29	04/25/2021	05/24/2021	0	20.534	20.534	1	006

**Current Activity**

Basic Service Charge		\$25.00
KWH Revenue	955 kWh @ .0902	\$86.14
Operation Round Up Amount		\$0.81
Low Income Assistance		\$0.05
<b>Total Current Activity</b>		<b>\$112.00</b>



COMPARISONS	Days	kWh	Avg Temp	Avg kWh
Current Month	29	955	54	33
Previous Month	31	1500	52	48
Same Last Year	30	888	56	30

Avg Cost Per Day: \$3.83

**Any BALANCE FORWARD is subject to DISCONNECTION of services.**

Please return this stub with your payment. Please do not staple, paperclip, or tape.



CONSUMERS POWER INC.  
 P.O. BOX 1180  
 6990 WEST HILLS ROAD  
 PHILOMATH, OR 97370

**ACCOUNT #** 5309701  
**SERVICE ADDRESS:** 435 E ALDER ST-MEDICAL FACILITY

**Total Due: \$112.00**  
**Payment is due by 06/25/21**



**One-Time Operation Roundup Donation:**

\$ \_\_\_\_\_

1672 1 AB 0.425  
 ALSEA RURAL HEALTH CARE  
 PO BOX 579  
 CORVALLIS OR 97339-0579

5 1672  
 C-5 P-10

CONSUMERS POWER, INC.  
 PO BOX 1180  
 PHILOMATH OR 97370-1180



00000530970100000112003

## **DROP BOX LOCATIONS:**

**Philomath** - CPI Office

**Lebanon** - CPI Office

**Albany** - Postal Connections

**Alsea** - John Boy's Mercantile

## **POWER OUTAGES:**

Check your fuses and breakers to ensure the problem is not within your electrical system.

If you have determined there is an outage, report it by calling 541-929-3124, 1-800-872-9036, 24/7, by using CPI's SmartHub app, or your online account.

Stay away from downed power lines and **DO NOT TOUCH** them!



Help the local community by donating through **AmazonSmile** to Consumers Power Charitable Trust. All donated money is given to organizations that help improve the areas where we live and help those in need.



### **Other Ways to Pay Your Bill**



#### **Online**

Pay your bill at  
[cpi.coop](http://cpi.coop)



#### **Phone**

Call 541-929-3124  
or 800-872-9036  
to speak with us



#### **Mobile App**

Download the SmartHub app  
on iTunes or Google Play Store



#### **In-Person**

6990 West Hills Rd  
Philomath, OR 97370

#### **Lebanon Office**

1900 Oak St  
Lebanon, OR 97355



CONSUMERS POWER INC.

Office Hours: Monday - Thursday 7:00 a.m. to 5:30 p.m.  
 Contact us: 541-929-3124 or 1-800-872-9036 Hours: 24/7  
[www.cpi.coop](http://www.cpi.coop)

Member Name: **ALSEA RURAL HEALTH CARE**  
 Account #: **5309701**  
 Statement Date: **07/01/2021**

**TOTAL AMOUNT DUE**

# \$122.00

**DUE DATE 07/25/21**

**Member Monthly Message**

Wildfire season is upon us. Creating a defensive space around your home, assembling a "go-bag," and developing an evacuation plan are just a few of the ways you can prepare. For more tips and information please visit: [cpi.coop/safety/wildfire-safety](http://cpi.coop/safety/wildfire-safety)

Previous Account Activity	
Previous Balance	\$112.00
Payments Received - Thank You	-\$112.00
<b>Balance Before Current Charges</b>	<b>\$0.00</b>
<b>Account Balance</b>	<b>\$122.00</b>

**YTD Round Up Amount: \$4.74**

Rate Description: **GENERAL SERVICE**

Service Address: **435 E ALDER ST-MEDICAL FACILITY**

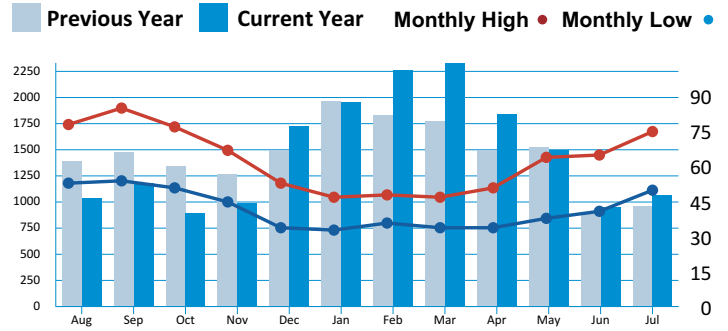
Meter #	Type	Days	Services		Readings		Metered Usage	Meter Multiplier	Rate
			From	To	Previous	Present			
18363	KWH	32	05/24/2021	06/25/2021	48850	49918	1068	1	006
18363	KW	32	05/24/2021	06/25/2021	0	20.534	20.534	1	006

**Current Activity**

Basic Service Charge	\$25.00
KWH Revenue	1,068 kWh @ .0902 \$96.33
Operation Round Up Amount	\$0.62
Low Income Assistance	\$0.05
<b>Total Current Activity</b>	<b>\$122.00</b>

**Usage History**

**Temp**



COMPARISONS	Days	kWh	Avg Temp	Avg kWh
Current Month	32	1068	64	33
Previous Month	29	955	54	33
Same Last Year	31	963	62	31

Avg Cost Per Day: \$3.79

**Any BALANCE FORWARD is subject to DISCONNECTION of services.**

Please return this stub with your payment. Please do not staple, paperclip, or tape.



CONSUMERS POWER INC.  
 P.O. BOX 1180  
 6990 WEST HILLS ROAD  
 PHILOMATH, OR 97370

**ACCOUNT # 5309701**  
**SERVICE ADDRESS: 435 E ALDER ST-MEDICAL FACILITY**

**Total Due: \$122.00**  
**Payment is due by 07/25/21**



**One-Time Operation Roundup Donation:**

\$ \_\_\_\_\_

1687 1 AB 0.428  
 ALSEA RURAL HEALTH CARE  
 PO BOX 579  
 CORVALLIS OR 97339-0579

5 1687  
 C-5

CONSUMERS POWER, INC.  
 PO BOX 1180  
 PHILOMATH OR 97370-1180



00000530970100000122002

## **DROP BOX LOCATIONS:**

**Philomath** - CPI Office

**Lebanon** - CPI Office

**Albany** - Postal Connections

**Alsea** - John Boy's Mercantile

## **POWER OUTAGES:**

Check your fuses and breakers to ensure the problem is not within your electrical system.

If you have determined there is an outage, report it by calling 541-929-3124, 1-800-872-9036, 24/7, by using CPI's SmartHub app, or your online account.

Stay away from downed power lines and DO NOT TOUCH them!

## **PAYMENT ASSISTANCE:**

If you are having problems paying your bill our partner organizations, Community Services Consortium, Mid-Willamette Valley Community Action and Lane County Human Services, might be able to help. They can help with rental and utility bill assistance. Please call, email or visit them online to learn if you can qualify. Please be sure to notify CPI for any payment arrangements.

### **For those in Benton, Lincoln and Linn counties:**

#### **Community Services Consortium**

Website: [www.communityservices.us](http://www.communityservices.us)

Email: [info@communityservices.us](mailto:info@communityservices.us)

Benton: 541-752-2840

Linn: 541-926-7163

Lincoln: 541-265-3293

### **For those in Marion and Polk counties:**

#### **Mid-Willamette Valley Community Action**

Website: [mwvcaa.org/programs/energy-services/](http://mwvcaa.org/programs/energy-services/)

Email: [info@mwvcaa.org](mailto:info@mwvcaa.org)

Phone: 503-585-6232

### **For those in Lane county:**

#### **Lane County Human Services**

Website: [www.lanecounty.org](http://www.lanecounty.org)

Email: [ENERGY@co.lane.or.us](mailto:ENERGY@co.lane.or.us)

Phone: 541-682-3378



Help the local community by donating through **AmazonSmile** to Consumers Power Charitable Trust. All donated money is given to organizations that help improve the areas where we live and help those in need.



## **Other Ways to Pay Your Bill**



### **Online**

Pay your bill at [cpi.coop](http://cpi.coop)



### **Phone**

Call 541-929-3124 or 800-872-9036 to speak with us



### **Mobile App**

Download the SmartHub app on iTunes or Google Play Store



### **In-Person**

6990 West Hills Rd  
Philomath, OR 97370

### **Lebanon Office**

1900 Oak St  
Lebanon, OR 97355



CONSUMERS POWER INC.

Office Hours: Monday - Thursday 7:00 a.m. to 5:30 p.m.  
 Contact us: 541-929-3124 or 1-800-872-9036 Hours: 24/7  
[www.cpi.coop](http://www.cpi.coop)

Member Name: **ALSEA RURAL HEALTH CARE**  
 Account #: **5309701**  
 Statement Date: **08/02/2021**

**TOTAL AMOUNT DUE**

# \$125.00

**DUE DATE 08/25/21**

**Member Monthly Message**

The annual meeting is coming up. Join us Saturday, September 11th. Doors open at 9 AM. To RSVP please call 541-929-3124. For more information see the August Ruralite.

Previous Account Activity	
Previous Balance	\$122.00
Payments Received - Thank You	-\$122.00
<b>Balance Before Current Charges</b>	<b>\$0.00</b>
<b>Account Balance</b>	<b>\$125.00</b>

**YTD Round Up Amount: \$4.93**

Rate Description: **GENERAL SERVICE**

Service Address: **435 E ALDER ST-MEDICAL FACILITY**

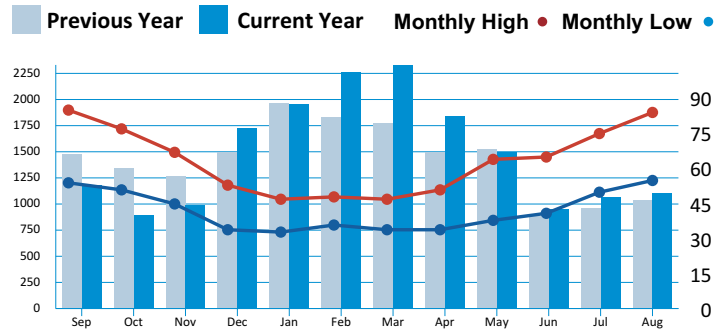
Meter #	Type	Days	Services		Readings		Metered Usage	Meter Multiplier	Rate
			From	To	Previous	Present			
18363	KWH	30	06/25/2021	07/25/2021	49918	51024	1106	1	006
18363	KW	30	06/25/2021	07/25/2021	0	10.185	10.185	1	006

**Current Activity**

Basic Service Charge	\$25.00
KWH Revenue	1,106 kWh @ .0902 \$99.76
Operation Round Up Amount	\$0.19
Low Income Assistance	\$0.05
<b>Total Current Activity</b>	<b>\$125.00</b>

**Usage History**

**Temp**



COMPARISONS	Days	kWh	Avg Temp	Avg kWh
Current Month	30	1106	71	37
Previous Month	32	1068	64	33
Same Last Year	30	1042	67	35

Avg Cost Per Day: \$4.16

**Any BALANCE FORWARD is subject to DISCONNECTION of services.**

Please return this stub with your payment. Please do not staple, paperclip, or tape.



CONSUMERS POWER INC.  
 P.O. BOX 1180  
 6990 WEST HILLS ROAD  
 PHILOMATH, OR 97370

**ACCOUNT # 5309701**  
**SERVICE ADDRESS: 435 E ALDER ST-MEDICAL FACILITY**

**Total Due: \$125.00**  
**Payment is due by 08/25/21**



**One-Time Operation Roundup Donation:**

\$ \_\_\_\_\_

1673 1 AB 0.428  
 ALSEA RURAL HEALTH CARE  
 PO BOX 579  
 CORVALLIS OR 97339-0579

5 1673  
 C-5

CONSUMERS POWER, INC.  
 PO BOX 1180  
 PHILOMATH OR 97370-1180



00000530970100000125005

## **DROP BOX LOCATIONS:**

**Philomath** - CPI Office

**Lebanon** - CPI Office

**Albany** - Postal Connections

**Alsea** - John Boy's Mercantile

## **POWER OUTAGES:**

Check your fuses and breakers to ensure the problem is not within your electrical system.

If you have determined there is an outage, report it by calling 541-929-3124, 1-800-872-9036, 24/7, by using CPI's SmartHub app, or your online account.

Stay away from downed power lines and DO NOT TOUCH them!

## **PAYMENT ASSISTANCE:**

If you are having problems paying your bill our partner organizations, Community Services Consortium, Mid-Willamette Valley Community Action and Lane County Human Services, might be able to help. They can help with rental and utility bill assistance. Please call, email or visit them online to learn if you can qualify. Please be sure to notify CPI for any payment arrangements.

### **For those in Benton, Lincoln and Linn counties:**

#### **Community Services Consortium**

Website: [www.communityservices.us](http://www.communityservices.us)

Email: [info@communityservices.us](mailto:info@communityservices.us)

Benton: 541-752-2840

Linn: 541-926-7163

Lincoln: 541-265-3293

### **For those in Marion and Polk counties:**

#### **Mid-Willamette Valley Community Action**

Website: [mwvcaa.org/programs/energy-services/](http://mwvcaa.org/programs/energy-services/)

Email: [info@mwvcaa.org](mailto:info@mwvcaa.org)

Phone: 503-585-6232

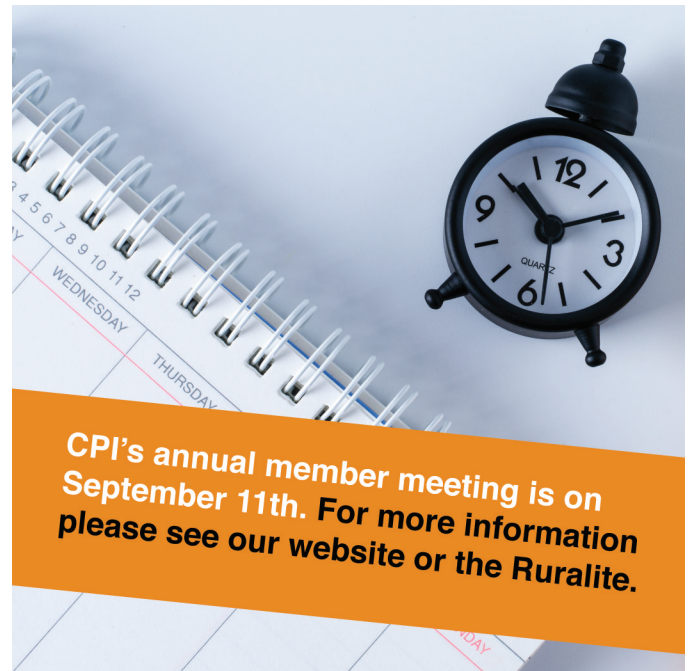
### **For those in Lane county:**

#### **Lane County Human Services**

Website: [www.lanecounty.org](http://www.lanecounty.org)

Email: [ENERGY@co.lane.or.us](mailto:ENERGY@co.lane.or.us)

Phone: 541-682-3378



## **Other Ways to Pay Your Bill**



### **Online**

Pay your bill at  
[cpi.coop](http://cpi.coop)



### **Phone**

Call 541-929-3124  
or 800-872-9036  
to speak with us



### **Mobile App**

Download the SmartHub app  
on iTunes or Google Play Store



### **In-Person**

6990 West Hills Rd  
Philomath, OR 97370

### **Lebanon Office**

1900 Oak St  
Lebanon, OR 97355





CONSUMERS POWER INC.

Office Hours: Monday - Thursday 7:00 a.m. to 5:30 p.m.  
 Contact us: 541-929-3124 or 1-800-872-9036 Hours: 24/7  
[www.cpi.coop](http://www.cpi.coop)

**Member Name:** ALSEA RURAL HEALTH CARE  
**Account #:** 5309701  
**Statement Date:** 09/01/2021

**TOTAL AMOUNT DUE**

# \$179.00

**DUE DATE 09/25/21**

**Member Monthly Message**

Welcome back to school! As the days get shorter help us keep our children safe by reporting any burned out streetlights to 800-872-9036.

Previous Account Activity	
Previous Balance	\$125.00
Payments Received - Thank You	-\$125.00
<b>Balance Before Current Charges</b>	<b>\$0.00</b>
<b>Account Balance</b>	<b>\$179.00</b>

**YTD Round Up Amount: \$5.00**

Rate Description: **GENERAL SERVICE**

Service Address: **435 E ALDER ST-MEDICAL FACILITY**

Meter #	Type	Days	Services		Readings		Metered Usage	Meter Multiplier	Rate
			From	To	Previous	Present			
18363	KWH	31	07/25/2021	08/25/2021	51024	52730	1706	1	006
18363	KW	31	07/25/2021	08/25/2021	0	9.427	9.427	1	006

**Current Activity**

Basic Service Charge		\$25.00
KWH Revenue	1,706 kWh @ .0902	\$153.88
Operation Round Up Amount		\$0.07
Low Income Assistance		\$0.05
<b>Total Current Activity</b>		<b>\$179.00</b>

**Any BALANCE FORWARD is subject to DISCONNECTION of services.**

**Usage History**      **Temp**

■ Previous Year   ■ Current Year   ● Monthly High   ● Monthly Low

COMPARISONS	Days	kWh	Avg Temp	Avg kWh
Current Month	31	1706	72	55
Previous Month	30	1106	71	37
Same Last Year	31	1180	71	38

Avg Cost Per Day: \$5.77

Please return this stub with your payment. Please do not staple, paperclip, or tape.



CONSUMERS POWER INC.  
 P.O. BOX 1180  
 6990 WEST HILLS ROAD  
 PHILOMATH, OR 97370

**ACCOUNT #** 5309701  
**SERVICE ADDRESS:** 435 E ALDER ST-MEDICAL FACILITY

**Total Due: \$179.00**  
**Payment is due by 09/25/21**



**One-Time Operation Roundup Donation:**  
 \$ \_\_\_\_\_

1677 1 AB 0.461  
 ALSEA RURAL HEALTH CARE  
 PO BOX 579  
 CORVALLIS OR 97339-0579

5 1677  
 C-5

CONSUMERS POWER, INC.  
 PO BOX 1180  
 PHILOMATH OR 97370-1180



00000530970100000179002

## **DROP BOX LOCATIONS:**

**Philomath** - CPI Office

**Lebanon** - CPI Office

**Albany** - Postal Connections

**Alsea** - John Boy's Mercantile

## **POWER OUTAGES:**

Check your fuses and breakers to ensure the problem is not within your electrical system.

If you have determined there is an outage, report it by calling 541-929-3124, 1-800-872-9036, 24/7, by using CPI's SmartHub app, or your online account.

Stay away from downed power lines and DO NOT TOUCH them!

## **PAYMENT ASSISTANCE:**

If you are having problems paying your bill our partner organizations, Community Services Consortium, Mid-Willamette Valley Community Action and Lane County Human Services, might be able to help. They can help with rental and utility bill assistance. Please call, email or visit them online to learn if you can qualify. Please be sure to notify CPI for any payment arrangements.

### **For those in Benton, Lincoln and Linn counties:**

#### **Community Services Consortium**

Website: [www.communityservices.us](http://www.communityservices.us)

Email: [info@communityservices.us](mailto:info@communityservices.us)

Benton: 541-752-2840

Linn: 541-926-7163

Lincoln: 541-265-3293

### **For those in Marion and Polk counties:**

#### **Mid-Willamette Valley Community Action**

Website: [mwvcaa.org/programs/energy-services/](http://mwvcaa.org/programs/energy-services/)

Email: [info@mwvcaa.org](mailto:info@mwvcaa.org)

Phone: 503-585-6232

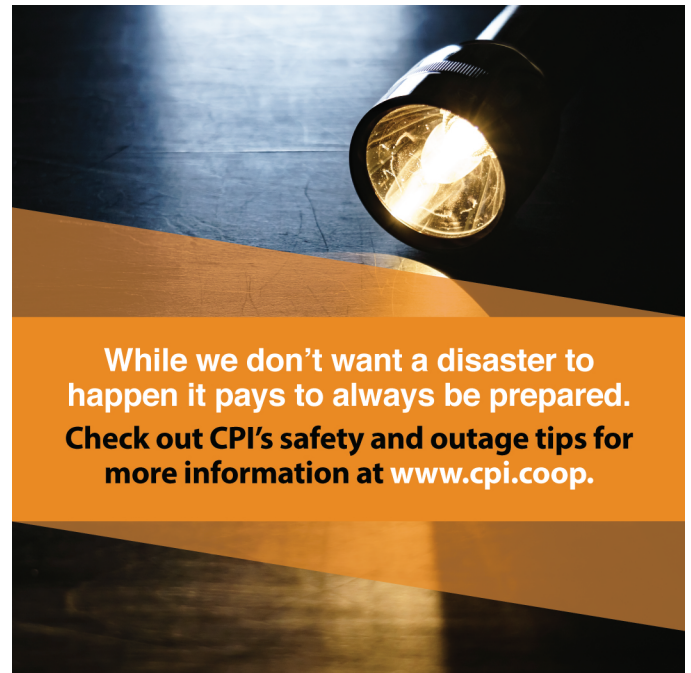
### **For those in Lane county:**

#### **Lane County Human Services**

Website: [www.lanecounty.org](http://www.lanecounty.org)

Email: [ENERGY@co.lane.or.us](mailto:ENERGY@co.lane.or.us)

Phone: 541-682-3378



**While we don't want a disaster to happen it pays to always be prepared. Check out CPI's safety and outage tips for more information at [www.cpi.coop](http://www.cpi.coop).**

## **Other Ways to Pay Your Bill**



### **Online**

Pay your bill at [cpi.coop](http://cpi.coop)



### **Phone**

Call 541-929-3124 or 800-872-9036 to speak with us



### **Mobile App**

Download the SmartHub app on iTunes or Google Play Store



### **In-Person**

6990 West Hills Rd  
Philomath, OR 97370

### **Lebanon Office**

1900 Oak St  
Lebanon, OR 97355



CONSUMERS POWER INC.

Office Hours: Monday - Thursday 7:00 a.m. to 5:30 p.m.  
 Contact us: 541-929-3124 or 1-800-872-9036 Hours: 24/7  
[www.cpi.coop](http://www.cpi.coop)

Member Name: **ALSEA RURAL HEALTH CARE**  
 Account #: **5309701**  
 Statement Date: **10/04/2021**

**TOTAL AMOUNT DUE**

**\$326.00**

**BALANCE FORWARD \$179.00 DUE NOW**

**Member Monthly Message**  
 October is National Co-Op Month! All this month we are celebrating you, the members we serve. Without you we wouldn't be where we are today.

<b>Previous Account Activity</b>	
Previous Balance	\$179.00
No Payments Made	\$0.00
<b>Balance Before Current Charges</b>	<b>\$179.00</b>
<b>Account Balance</b>	<b>\$326.00</b>

**YTD Round Up Amount: \$5.29**

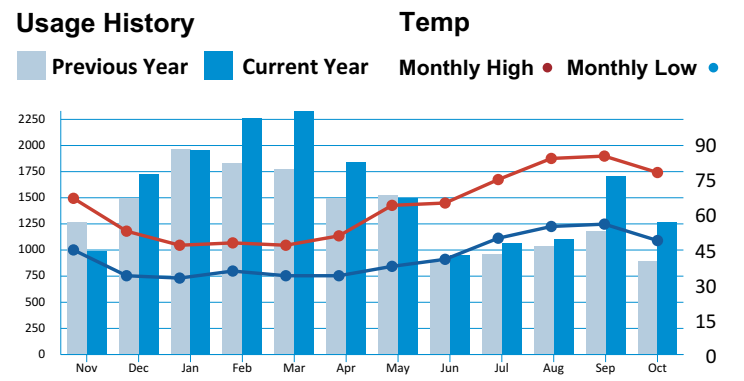
Rate Description: **GENERAL SERVICE**

Service Address: **435 E ALDER ST-MEDICAL FACILITY**

Meter #	Type	Days	Services		Readings		Metered Usage	Meter Multiplier	Rate
			From	To	Previous	Present			
18363	KWH	31	08/25/2021	09/25/2021	52730	53998	1268	1	006
18363	KW	31	08/25/2021	09/25/2021	0	11.011	11.011	1	006

**Current Activity**

Basic Service Charge	\$30.00
KWH Revenue	1,268 kWh @ .0920 \$116.66
Operation Round Up Amount	\$0.29
Low Income Assistance	\$0.05
<b>Total Current Activity</b>	<b>\$147.00</b>



COMPARISONS	Days	kWh	Avg Temp	Avg kWh
Current Month	31	1268	65	41
Previous Month	31	1706	72	55
Same Last Year	31	892	65	29

Avg Cost Per Day: \$4.73

**Any BALANCE FORWARD is subject to DISCONNECTION of services.**

Please return this stub with your payment. Please do not staple, paperclip, or tape.



CONSUMERS POWER INC.  
 P.O. BOX 1180  
 6990 WEST HILLS ROAD  
 PHILOMATH, OR 97370

**ACCOUNT # 5309701**  
**SERVICE ADDRESS: 435 E ALDER ST-MEDICAL FACILITY**

**Total Due: \$326.00**  
**Payment is due by 10/25/21**



**One-Time Operation Roundup Donation:**

\$ \_\_\_\_\_

1666 1 AB 0.461  
 ALSEA RURAL HEALTH CARE  
 PO BOX 579  
 CORVALLIS OR 97339-0579

5 1666  
 C-5

CONSUMERS POWER, INC.  
 PO BOX 1180  
 PHILOMATH OR 97370-1180



00000530970100000326009

## **DROP BOX LOCATIONS:**

**Philomath** - CPI Office

**Lebanon** - CPI Office

**Albany** - Postal Connections

**Alsea** - John Boy's Mercantile

## **POWER OUTAGES:**

Check your fuses and breakers to ensure the problem is not within your electrical system.

If you have determined there is an outage, report it by calling 541-929-3124, 1-800-872-9036, 24/7, by using CPI's SmartHub app, or your online account.

Stay away from downed power lines and DO NOT TOUCH them!

## **PAYMENT ASSISTANCE:**

If you are having problems paying your bill our partner organizations, Community Services Consortium, Mid-Willamette Valley Community Action and Lane County Human Services, might be able to help. They can help with rental and utility bill assistance. Please call, email or visit them online to learn if you can qualify. Please be sure to notify CPI for any payment arrangements.

### **For those in Benton, Lincoln and Linn counties:**

#### **Community Services Consortium**

Website: [www.communityservices.us](http://www.communityservices.us)

Email: [info@communityservices.us](mailto:info@communityservices.us)

Benton: 541-752-2840

Linn: 541-926-7163

Lincoln: 541-265-3293

### **For those in Marion and Polk counties:**

#### **Mid-Willamette Valley Community Action**

Website: [mwvcaa.org/programs/energy-services/](http://mwvcaa.org/programs/energy-services/)

Email: [info@mwvcaa.org](mailto:info@mwvcaa.org)

Phone: 503-585-6232

### **For those in Lane county:**

#### **Lane County Human Services**

Website: [www.lanecounty.org](http://www.lanecounty.org)

Email: [ENERGY@co.lane.or.us](mailto:ENERGY@co.lane.or.us)

Phone: 541-682-3378



## **WE CAN'T SEE YOU!**

In case of an outage, can we get a hold of you? You can check or update your phone number with CPI by giving us a call or visiting us online.

### **Other Ways to Pay Your Bill**



#### **Online**

Pay your bill at  
[cpi.coop](http://cpi.coop)



#### **Phone**

Call 541-929-3124  
or 800-872-9036  
to speak with us



#### **Mobile App**

Download the SmartHub app  
on iTunes or Google Play Store



#### **In-Person**

6990 West Hills Rd  
Philomath, OR 97370

#### **Lebanon Office**

1900 Oak St  
Lebanon, OR 97355



CONSUMERS POWER INC.

Office Hours: Monday - Thursday 7:00 a.m. to 5:30 p.m.  
 Contact us: 541-929-3124 or 1-800-872-9036 Hours: 24/7  
[www.cpi.coop](http://www.cpi.coop)

Member Name: **ALSEA RURAL HEALTH CARE**  
 Account #: **5309701**  
 Statement Date: **11/01/2021**

**TOTAL AMOUNT DUE**

# \$122.00

**DUE DATE 11/25/21**

**Member Monthly Message**  
 November is a time for reflection and giving thanks! From our table to yours, happy Thanksgiving. In honor of Veterans Day, we would also like to express our appreciation to all who have served our country.

Previous Account Activity	
Previous Balance	\$326.00
Payments Received - Thank You	-\$326.00
<b>Balance Before Current Charges</b>	<b>\$0.00</b>
<b>Account Balance</b>	<b>\$122.00</b>

**YTD Round Up Amount: \$5.79**

Rate Description: **GENERAL SERVICE**

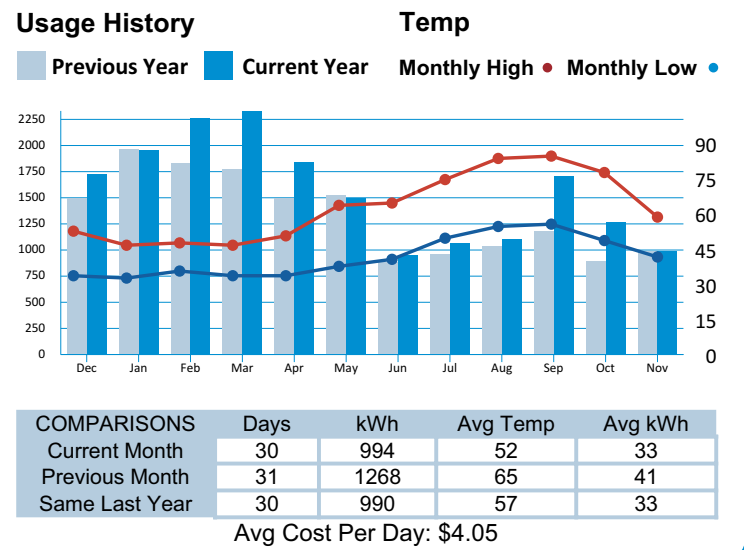
Service Address: **435 E ALDER ST-MEDICAL FACILITY**

Meter #	Type	Days	Services		Readings		Metered Usage	Meter Multiplier	Rate
			From	To	Previous	Present			
18363	KWH	30	09/25/2021	10/25/2021	53998	54992	994	1	006
18363	KW	30	09/25/2021	10/25/2021	0	16.339	16.339	1	006

**Current Activity**

Basic Service Charge	\$30.00
KWH Revenue	994 kWh @ .0920 \$91.45
Operation Round Up Amount	\$0.50
Low Income Assistance	\$0.05
<b>Total Current Activity</b>	<b>\$122.00</b>

**Any BALANCE FORWARD is subject to DISCONNECTION of services.**



Please return this stub with your payment. Please do not staple, paperclip, or tape.



CONSUMERS POWER INC.  
 P.O. BOX 1180  
 6990 WEST HILLS ROAD  
 PHILOMATH, OR 97370

**ACCOUNT # 5309701**  
**SERVICE ADDRESS: 435 E ALDER ST-MEDICAL FACILITY**

**Total Due: \$122.00**  
**Payment is due by 11/25/21**



**One-Time Operation Roundup Donation:**

\$ \_\_\_\_\_

1656 1 AB 0.461  
 ALSEA RURAL HEALTH CARE  
 PO BOX 579  
 CORVALLIS OR 97339-0579

5 1656  
 C-6

CONSUMERS POWER, INC.  
 PO BOX 1180  
 PHILOMATH OR 97370-1180



00000530970100000122002

## **DROP BOX LOCATIONS:**

**Philomath** - CPI Office

**Lebanon** - CPI Office

**Albany** - Postal Connections

**Alsea** - John Boy's Mercantile

## **POWER OUTAGES:**

Check your fuses and breakers to ensure the problem is not within your electrical system.

If you have determined there is an outage, report it by calling 541-929-3124, 1-800-872-9036, 24/7, by using CPI's SmartHub app, or your online account.

Stay away from downed power lines and DO NOT TOUCH them!

## **PAYMENT ASSISTANCE:**

If you are having problems paying your bill our partner organizations, Community Services Consortium, Mid-Willamette Valley Community Action and Lane County Human Services, might be able to help. They can help with rental and utility bill assistance. Please call, email or visit them online to learn if you can qualify. Please be sure to notify CPI for any payment arrangements.

**For those in Benton, Lincoln and Linn counties:**

**Community Services Consortium**

Website: [www.communityservices.us](http://www.communityservices.us)

Email: [info@communityservices.us](mailto:info@communityservices.us)

Benton: 541-752-2840

Linn: 541-926-7163

Lincoln: 541-265-3293

**For those in Marion and Polk counties:**

**Mid-Willamette Valley Community Action**

Website: [mwvcaa.org/programs/energy-services/](http://mwvcaa.org/programs/energy-services/)

Email: [info@mwvcaa.org](mailto:info@mwvcaa.org)

Phone: 503-585-6232

**For those in Lane county:**

**Lane County Human Services**

Website: [www.lanecounty.org](http://www.lanecounty.org)

Email: [ENERGY@co.lane.or.us](mailto:ENERGY@co.lane.or.us)

Phone: 541-682-3378



Quit wasting money on your old water heater. Save over \$200 a year in operating costs for switching over to a heat pump water heater. Contact or visit us online for more information.

### **Other Ways to Pay Your Bill**



**Online**

Pay your bill at [cpi.coop](http://cpi.coop)



**Phone**

Call 541-929-3124 or 800-872-9036 to speak with us



**Mobile App**

Download the SmartHub app on iTunes or Google Play Store



**In-Person**

6990 West Hills Rd  
Philomath, OR 97370

**Lebanon Office**

1900 Oak St  
Lebanon, OR 97355



CONSUMERS POWER INC.

Office Hours: Monday - Thursday 7:00 a.m. to 5:30 p.m.  
 Contact us: 541-929-3124 or 1-800-872-9036 Hours: 24/7  
[www.cpi.coop](http://www.cpi.coop)

Member Name: **ALSEA RURAL HEALTH CARE**  
 Account #: **5309701**  
 Statement Date: **12/01/2021**

**TOTAL AMOUNT DUE**

# \$134.00

**DUE DATE 12/25/21**

**Member Monthly Message**

YTD RoundUp Amount: \$6.33

Check out December's Ruralite for two exciting opportunities available exclusively to CPI members. Submit your photo's for the Ruralite cover contest, and encourage your high school junior to apply for the D.C. Youth Tour. See Ruralite for deadlines and details. Have a fun and festive holiday season. Merry Christmas!

Previous Account Activity	
Previous Balance	\$122.00
Payments Received - Thank You	-\$122.00
<b>Balance Before Current Charges</b>	<b>\$0.00</b>
<b>Account Balance</b>	<b>\$134.00</b>

**YTD Round Up Amount: \$6.33**

Rate Description: **GENERAL SERVICE**

Service Address: **435 E ALDER ST-MEDICAL FACILITY**

Meter #	Type	Days	Services		Readings		Metered Usage	Meter Multiplier	Rate
			From	To	Previous	Present			
18363	KWH	31	10/25/2021	11/25/2021	54992	56116	1124	1	006
18363	KW	31	10/25/2021	11/25/2021	0	23.27	23.270	1	006

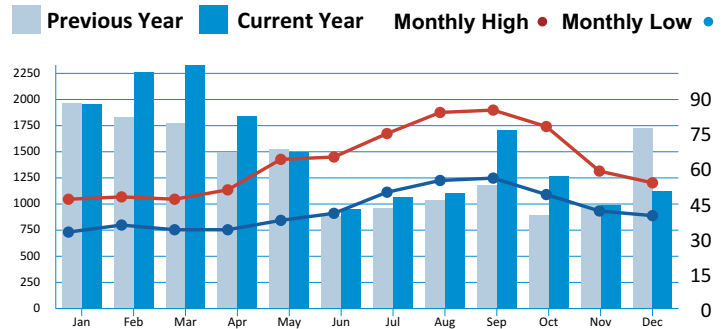
**Current Activity**

Basic Service Charge		\$30.00
KWH Revenue	1,124 kWh @ .0920	\$103.41
Operation Round Up Amount		\$0.54
Low Income Assistance		\$0.05
<b>Total Current Activity</b>		<b>\$134.00</b>

**Any BALANCE FORWARD is subject to DISCONNECTION of services.**

**Usage History**

**Temp**



COMPARISONS	Days	kWh	Avg Temp	Avg kWh
Current Month	31	1124	48	36
Previous Month	30	994	52	33
Same Last Year	31	1730	45	56

Avg Cost Per Day: \$4.30

Please return this stub with your payment. Please do not staple, paperclip, or tape.



CONSUMERS POWER INC.  
 P.O. BOX 1180  
 6990 WEST HILLS ROAD  
 PHILOMATH, OR 97370

**ACCOUNT # 5309701**  
**SERVICE ADDRESS: 435 E ALDER ST-MEDICAL FACILITY**

**Total Due: \$134.00**  
**Payment is due by 12/25/21**



**One-Time Operation Roundup Donation:**

\$ \_\_\_\_\_

1642 1 AB 0.461  
 ALSEA RURAL HEALTH CARE  
 PO BOX 579  
 CORVALLIS OR 97339-0579

5 1642  
 C-5

CONSUMERS POWER, INC.  
 PO BOX 1180  
 PHILOMATH OR 97370-1180



00000530970100000134007

## **DROP BOX LOCATIONS:**

**Philomath** - CPI Office

**Lebanon** - CPI Office

**Albany** - Postal Connections

**Alsea** - John Boy's Mercantile

## **POWER OUTAGES:**

Check your fuses and breakers to ensure the problem is not within your electrical system.

If you have determined there is an outage, report it by calling 541-929-3124, 1-800-872-9036, 24/7, by using CPI's SmartHub app, or your online account.

Stay away from downed power lines and DO NOT TOUCH them!

## **PAYMENT ASSISTANCE:**

If you are having problems paying your bill our partner organizations, Community Services Consortium, Mid-Willamette Valley Community Action and Lane County Human Services, might be able to help. They can help with rental and utility bill assistance. Please call, email or visit them online to learn if you can qualify. Please be sure to notify CPI for any payment arrangements.

### **For those in Benton, Lincoln and Linn counties:**

#### **Community Services Consortium**

Website: [www.communityservices.us](http://www.communityservices.us)

Email: [info@communityservices.us](mailto:info@communityservices.us)

Benton: 541-752-2840

Linn: 541-926-7163

Lincoln: 541-265-3293

### **For those in Marion and Polk counties:**

#### **Mid-Willamette Valley Community Action**

Website: [mwvcaa.org/programs/energy-services/](http://mwvcaa.org/programs/energy-services/)

Email: [info@mwvcaa.org](mailto:info@mwvcaa.org)

Phone: 503-585-6232

### **For those in Lane county:**

#### **Lane County Human Services**

Website: [www.lanecounty.org](http://www.lanecounty.org)

Email: [ENERGY@co.lane.or.us](mailto:ENERGY@co.lane.or.us)

Phone: 541-682-3378



**Quit wasting money on your old water heater. Save over \$200 a year in operating costs for switching over to a heat pump water heater. Contact or visit us online for more information.**

## **Other Ways to Pay Your Bill**



### **Online**

Pay your bill at  
[cpi.coop](http://cpi.coop)



### **Phone**

Call 541-929-3124  
or 800-872-9036  
to speak with us



### **Mobile App**

Download the SmartHub app  
on iTunes or Google Play Store



### **In-Person**

6990 West Hills Rd  
Philomath, OR 97370

### **Lebanon Office**

1900 Oak St  
Lebanon, OR 97355





CONSUMERS POWER INC.

Office Hours: Monday - Thursday 7:00 a.m. to 5:30 p.m.  
 Contact us: 541-929-3124 or 1-800-872-9036 Hours: 24/7  
[www.cpi.coop](http://www.cpi.coop)

**Member Name:** ALSEA RURAL HEALTH CENTER  
**Account #:** 5309701  
**Statement Date:** 01/03/2022

**TOTAL AMOUNT DUE**

# \$167.00

**DUE DATE 01/25/22**

**Member Monthly Message**  
 With the New Year comes new changes to CPI's energy services. Regrettably, CPI will no longer have light bulbs available for purchase. We have increased our rebate for EV home chargers, and have a special promotion on Heat Pump Water Heaters. Visit us online or see next months Ruralite for more details.

**Previous Account Activity**

Previous Balance	\$134.00
Payments Received - Thank You	-\$134.00
<b>Balance Before Current Charges</b>	<b>\$0.00</b>
<b>Account Balance</b>	<b>\$167.00</b>

**YTD Round Up Amount: \$0.51**

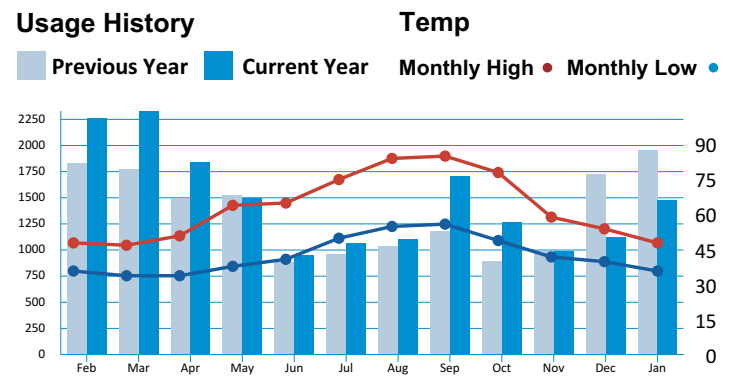
**Rate Description: GENERAL SERVICE**

**Service Address: 435 E ALDER ST-MEDICAL FACILITY**

Meter #	Type	Days	Services		Readings		Metered Usage	Meter Multiplier	Rate
			From	To	Previous	Present			
18363	KWH	30	11/25/2021	12/25/2021	56116	57599	1483	1	006
18363	KW	30	11/25/2021	12/25/2021	0	24.028	24.028	1	006

**Current Activity**

Basic Service Charge	\$30.00
KWH Revenue	1,483 kWh @ .0920 \$136.44
Operation Round Up Amount	\$0.51
Low Income Assistance	\$0.05
<b>Total Current Activity</b>	<b>\$167.00</b>



COMPARISONS	Days	kWh	Avg Temp	Avg kWh
Current Month	30	1483	44	49
Previous Month	31	1124	48	36
Same Last Year	30	1955	42	65

Avg Cost Per Day: \$5.55

**Any BALANCE FORWARD is subject to DISCONNECTION of services.**

Please return this stub with your payment. Please do not staple, paperclip, or tape.



CONSUMERS POWER INC.  
 P.O. BOX 1180  
 6990 WEST HILLS ROAD  
 PHILOMATH, OR 97370

**ACCOUNT #** 5309701  
**SERVICE ADDRESS:** 435 E ALDER ST-MEDICAL FACILITY

**Total Due: \$167.00**  
**Payment is due by 01/25/22**



**One-Time Operation Roundup Donation:**  
 \$ \_\_\_\_\_

1619 1 AB 0.461  
 ALSEA RURAL HEALTH CENTER  
 % BENTON CO HEALTH DEPT  
 360 SW AVERY AVE  
 CORVALLIS OR 97333-1139

5 1619  
 C-5

CONSUMERS POWER, INC.  
 PO BOX 1180  
 PHILOMATH OR 97370-1180



00000530970100000167007

## **DROP BOX LOCATIONS:**

**Philomath** - CPI Office

**Lebanon** - CPI Office

**Albany** - Postal Connections

**Alsea** - John Boy's Mercantile

## **POWER OUTAGES:**

Check your fuses and breakers to ensure the problem is not within your electrical system.

If you have determined there is an outage, report it by calling 541-929-3124, 1-800-872-9036, 24/7, by using CPI's SmartHub app, or your online account.

Stay away from downed power lines and DO NOT TOUCH them!

## **PAYMENT ASSISTANCE:**

If you are having problems paying your bill our partner organizations, Community Services Consortium, Mid-Willamette Valley Community Action and Lane County Human Services, might be able to help. They can help with rental and utility bill assistance. Please call, email or visit them online to learn if you can qualify. Please be sure to notify CPI for any payment arrangements.

### **For those in Benton, Lincoln and Linn counties:**

#### **Community Services Consortium**

Website: [www.communityservices.us](http://www.communityservices.us)

Email: [info@communityservices.us](mailto:info@communityservices.us)

Benton: 541-752-2840

Linn: 541-926-7163

Lincoln: 541-265-3293

### **For those in Marion and Polk counties:**

#### **Mid-Willamette Valley Community Action**

Website: [mwvcaa.org/programs/energy-services/](http://mwvcaa.org/programs/energy-services/)

Email: [info@mwvcaa.org](mailto:info@mwvcaa.org)

Phone: 503-585-6232

### **For those in Lane county:**

#### **Lane County Human Services**

Website: [www.lanecounty.org](http://www.lanecounty.org)

Email: [ENERGY@co.lane.or.us](mailto:ENERGY@co.lane.or.us)

Phone: 541-682-3378



**We want you! Are you a high school junior?  
If so apply for an all-expense paid trip to  
see Washington D.C. For more information  
visit us online or give us a call.**

## **Other Ways to Pay Your Bill**



### **Online**

Pay your bill at  
[cpi.coop](http://cpi.coop)



### **Phone**

Call 541-929-3124  
or 800-872-9036  
to speak with us



### **Mobile App**

Download the SmartHub app  
on iTunes or Google Play Store



### **In-Person**

6990 West Hills Rd  
Philomath, OR 97370

### **Lebanon Office**

1900 Oak St  
Lebanon, OR 97355



CONSUMERS POWER INC.

Office Hours: Monday - Thursday 7:00 a.m. to 5:30 p.m.  
 Contact us: 541-929-3124 or 1-800-872-9036 Hours: 24/7  
[www.cpi.coop](http://www.cpi.coop)

**Member Name:** ALSEA RURAL HEALTH CENTER  
**Account #:** 5309701  
**Statement Date:** 02/01/2022

**TOTAL AMOUNT DUE**

# \$229.00

**DUE DATE 02/25/22**

**Member Monthly Message**

Looking to pay your bill online, use your smart phone or tablet to check on your daily or monthly power usage, or send us a message? Check out SmartHub, CPI's online member portal, to access all of this information and more. You can download the app in the Apple Store or in Google Play, or visit us online at [www.cpi.coop](http://www.cpi.coop)

Previous Account Activity	
Previous Balance	\$167.00
Payments Received - Thank You	-\$167.00
<b>Balance Before Current Charges</b>	<b>\$0.00</b>
<b>Account Balance</b>	<b>\$229.00</b>

**YTD Round Up Amount: \$1.20**

Rate Description: GENERAL SERVICE

Service Address: 435 E ALDER ST-MEDICAL FACILITY

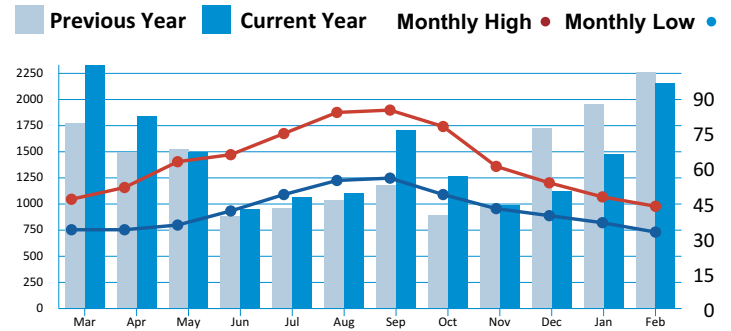
Meter #	Type	Days	Services		Readings		Metered Usage	Meter Multiplier	Rate
			From	To	Previous	Present			
18363	KWH	30	12/25/2021	01/24/2022	57599	59754	2155	1	006
18363	KW	30	12/25/2021	01/24/2022	0	20.361	20.361	1	006

**Current Activity**

Basic Service Charge		\$30.00
KWH Revenue	2,155 kWh @ .0920	\$198.26
Operation Round Up Amount		\$0.69
Low Income Assistance		\$0.05
<b>Total Current Activity</b>		<b>\$229.00</b>

**Usage History**

**Temp**



COMPARISONS	Days	kWh	Avg Temp	Avg kWh
Current Month	30	2155	40	72
Previous Month	30	1483	44	49
Same Last Year	31	2265	43	73

Avg Cost Per Day: \$7.61

Any BALANCE FORWARD is subject to DISCONNECTION of services.

Please return this stub with your payment. Please do not staple, paperclip, or tape.



CONSUMERS POWER INC.  
 P.O. BOX 1180  
 6990 WEST HILLS ROAD  
 PHILOMATH, OR 97370

**ACCOUNT #** 5309701  
**SERVICE ADDRESS:** 435 E ALDER ST-MEDICAL FACILITY

**Total Due: \$229.00**  
**Payment is due by 02/25/22**



**One-Time Operation Roundup Donation:**

\$ \_\_\_\_\_

1606 1 AB 0.461  
 ALSEA RURAL HEALTH CENTER  
 % BENTON CO HEALTH DEPT  
 360 SW AVERY AVE  
 CORVALLIS OR 97333-1139

5 1606  
 C-5

CONSUMERS POWER, INC.  
 PO BOX 1180  
 PHILOMATH OR 97370-1180



00000530970100000229005

## **DROP BOX LOCATIONS:**

**Philomath** - CPI Office

**Lebanon** - CPI Office

**Albany** - Postal Connections

**Alsea** - John Boy's Mercantile

## **POWER OUTAGES:**

Check your fuses and breakers to ensure the problem is not within your electrical system.

If you have determined there is an outage, report it by calling 541-929-3124, 1-800-872-9036, 24/7, by using CPI's SmartHub app, or your online account.

Stay away from downed power lines and DO NOT TOUCH them!

## **PAYMENT ASSISTANCE:**

If you are having problems paying your bill our partner organizations, Community Services Consortium, Mid-Willamette Valley Community Action and Lane County Human Services, might be able to help. They can help with rental and utility bill assistance. Please call, email or visit them online to learn if you can qualify. Please be sure to notify CPI for any payment arrangements.

### **For those in Benton, Lincoln and Linn counties:**

#### **Community Services Consortium**

Website: [www.communityservices.us](http://www.communityservices.us)

Email: [info@communityservices.us](mailto:info@communityservices.us)

Benton: 541-752-2840

Linn: 541-926-7163

Lincoln: 541-265-3293

### **For those in Marion and Polk counties:**

#### **Mid-Willamette Valley Community Action**

Website: [mwvcaa.org/programs/energy-services/](http://mwvcaa.org/programs/energy-services/)

Email: [info@mwvcaa.org](mailto:info@mwvcaa.org)

Phone: 503-585-6232

### **For those in Lane county:**

#### **Lane County Human Services**

Website: [www.lanecounty.org](http://www.lanecounty.org)

Email: [ENERGY@co.lane.or.us](mailto:ENERGY@co.lane.or.us)

Phone: 541-682-3378



**Over 80% of CPI's power comes from hydroelectricity with over 97% of our power as emissions free!**

## **Other Ways to Pay Your Bill**



### **Online**

Pay your bill at [cpi.coop](http://cpi.coop)



### **Phone**

Call 541-929-3124 or 800-872-9036 to speak with us



### **Mobile App**

Download the SmartHub app on iTunes or Google Play Store



### **In-Person**

6990 West Hills Rd  
Philomath, OR 97370

### **Lebanon Office**

1900 Oak St  
Lebanon, OR 97355



CONSUMERS POWER INC.

Office Hours: Monday - Thursday 7:00 a.m. to 5:30 p.m.  
 Contact us: 541-929-3124 or 1-800-872-9036 Hours: 24/7  
[www.cpi.coop](http://www.cpi.coop)

Member Name: **ALSEA RURAL HEALTH CENTER**  
 Account #: **5309701**  
 Statement Date: **03/01/2022**

**TOTAL AMOUNT DUE**

# \$231.00

**DUE DATE 03/25/22**

**Member Monthly Message**

Scam alerts are on the rise. CPI has been receiving reports of scammers calling our members and demanding payment or they will have their power shut off. This is not CPI. If you ever receive a phone call like this, do not give out any personal information over the phone. Hang up and call CPI to verify at 541-929-3124

Previous Account Activity	
Previous Balance	\$229.00
Payments Received - Thank You	-\$229.00
<b>Balance Before Current Charges</b>	<b>\$0.00</b>
<b>Account Balance</b>	<b>\$231.00</b>

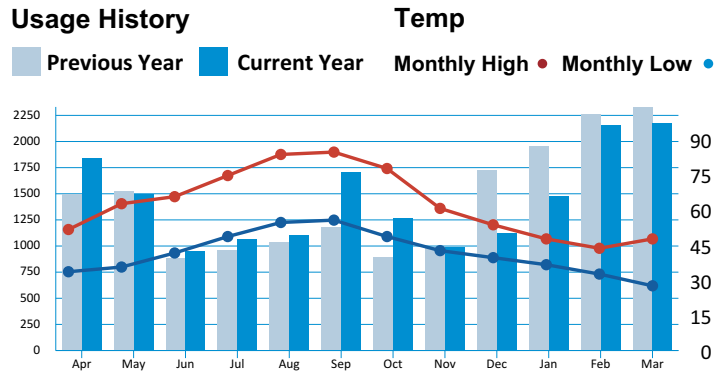
**YTD Round Up Amount: \$2.14**

Rate Description: **GENERAL SERVICE**

Service Address: **435 E ALDER ST-MEDICAL FACILITY**

Meter #	Type	Days	Services		Readings		Metered Usage	Meter Multiplier	Rate
			From	To	Previous	Present			
18363	KWH	32	01/24/2022	02/25/2022	59754	61928	2174	1	006
18363	KW	32	01/24/2022	02/25/2022	0	22.041	22.041	1	006

Current Activity	
Basic Service Charge	\$30.00
KWH Revenue	2,174 kWh @ .0920 \$200.01
Operation Round Up Amount	\$0.94
Low Income Assistance	\$0.05
<b>Total Current Activity</b>	<b>\$231.00</b>



COMPARISONS	Days	kWh	Avg Temp	Avg kWh
Current Month	32	2174	39	68
Previous Month	30	2155	40	72
Same Last Year	30	2331	42	78

Avg Cost Per Day: \$7.19

**Any BALANCE FORWARD is subject to DISCONNECTION of services.**

Please return this stub with your payment. Please do not staple, paperclip, or tape.



CONSUMERS POWER INC.  
 P.O. BOX 1180  
 6990 WEST HILLS ROAD  
 PHILOMATH, OR 97370

**ACCOUNT # 5309701**  
**SERVICE ADDRESS: 435 E ALDER ST-MEDICAL FACILITY**

**Total Due: \$231.00**  
**Payment is due by 03/25/22**



**One-Time Operation Roundup Donation:**

\$ \_\_\_\_\_

1608 1 AB 0.461  
 ALSEA RURAL HEALTH CENTER  
 % BENTON CO HEALTH DEPT  
 360 SW AVERY AVE  
 CORVALLIS OR 97333-1139

5 1608  
 C-5

CONSUMERS POWER, INC.  
 PO BOX 1180  
 PHILOMATH OR 97370-1180



00000530970100000231001

## **DROP BOX LOCATIONS:**

**Philomath** - CPI Office

**Lebanon** - CPI Office

**Albany** - Postal Connections

**Alsea** - John Boy's Mercantile

## **POWER OUTAGES:**

Check your fuses and breakers to ensure the problem is not within your electrical system.

If you have determined there is an outage, report it by calling 541-929-3124, 1-800-872-9036, 24/7, by using CPI's SmartHub app, or your online account.

Stay away from downed power lines and DO NOT TOUCH them!

## **PAYMENT ASSISTANCE:**

If you are having problems paying your bill our partner organizations, Community Services Consortium, Mid-Willamette Valley Community Action and Lane County Human Services, might be able to help. They can help with rental and utility bill assistance. Please call, email or visit them online to learn if you can qualify. Please be sure to notify CPI for any payment arrangements.

### **For those in Benton, Lincoln and Linn counties:**

#### **Community Services Consortium**

Website: [www.communityservices.us](http://www.communityservices.us)

Email: [info@communityservices.us](mailto:info@communityservices.us)

Benton: 541-752-2840

Linn: 541-926-7163

Lincoln: 541-265-3293

### **For those in Marion and Polk counties:**

#### **Mid-Willamette Valley Community Action**

Website: [mwvcaa.org/programs/energy-services/](http://mwvcaa.org/programs/energy-services/)

Email: [info@mwvcaa.org](mailto:info@mwvcaa.org)

Phone: 503-585-6232

### **For those in Lane county:**

#### **Lane County Human Services**

Website: [www.lanecounty.org](http://www.lanecounty.org)

Email: [ENERGY@co.lane.or.us](mailto:ENERGY@co.lane.or.us)

Phone: 541-682-3378



## **Other Ways to Pay Your Bill**



### **Online**

Pay your bill at [cpi.coop](http://cpi.coop)



### **Phone**

Call 541-929-3124 or 800-872-9036 to speak with us



### **Mobile App**

Download the SmartHub app on iTunes or Google Play Store



### **In-Person**

6990 West Hills Rd  
Philomath, OR 97370

### **Lebanon Office**

1900 Oak St  
Lebanon, OR 97355



CONSUMERS POWER INC.

Office Hours: Monday - Thursday 7:00 a.m. to 5:30 p.m.
Contact us: 541-929-3124 or 1-800-872-9036 Hours: 24/7
www.cpi.coop

Member Name: ALSEA RURAL HEALTH CENTER
Account #: 5309701
Statement Date: 04/04/2022

TOTAL AMOUNT DUE
\$194.00
DUE DATE 04/25/22

Member Monthly Message
In time for spring gardening and home improvement projects we would like to remind our members about Oregon 811- call before you dig. CPI partners with the Oregon Utility Notification Center to offer this free program. Simply dial 811 or visit digsafelyoregon.com to call for locates at least two days before you plan to dig or start your outdoor project. Stay safe this spring!

Table with Previous Account Activity: Previous Balance \$231.00, Payments Received - Thank You -\$231.00, Balance Before Current Charges \$0.00, Account Balance \$194.00

YTD Round Up Amount: \$2.79

Rate Description: GENERAL SERVICE

Service Address: 435 E ALDER ST-MEDICAL FACILITY

Table with columns: Meter #, Type, Days, Services (From, To), Readings (Previous, Present), Metered Usage, Meter Multiplier, Rate

Current Activity

Table with Current Activity items: Basic Service Charge \$30.00, KWH Revenue 1,775 kWh @ .0920 \$163.30, Operation Round Up Amount \$0.65, Low Income Assistance \$0.05, Total Current Activity \$194.00

Usage History

Temp

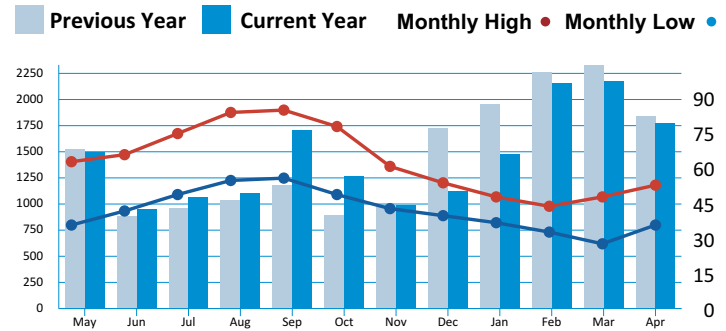


Table with Comparisons: Days, kWh, Avg Temp, Avg kWh for Current Month, Previous Month, Same Last Year

Any BALANCE FORWARD is subject to DISCONNECTION of services.

Avg Cost Per Day: \$6.90

Please return this stub with your payment. Please do not staple, paperclip, or tape.



CONSUMERS POWER INC.
P.O. BOX 1180
6990 WEST HILLS ROAD
PHILOMATH, OR 97370

ACCOUNT # 5309701
SERVICE ADDRESS: 435 E ALDER ST-MEDICAL FACILITY

Total Due: \$194.00
Payment is due by 04/25/22



One-Time Operation Roundup Donation:

\$ \_\_\_\_\_

1603 1 AB 0.461
ALSEA RURAL HEALTH CENTER
% BENTON CO HEALTH DEPT
360 SW AVERY AVE
CORVALLIS OR 97333-1139

5 1603
C-5

CONSUMERS POWER, INC.
PO BOX 1180
PHILOMATH OR 97370-1180



00000530970100000194001

## **DROP BOX LOCATIONS:**

**Philomath** - CPI Office

**Lebanon** - CPI Office

**Albany** - Postal Connections

**Alsea** - John Boy's Mercantile

## **POWER OUTAGES:**

Check your fuses and breakers to ensure the problem is not within your electrical system.

If you have determined there is an outage, report it by calling 541-929-3124, 1-800-872-9036, 24/7, by using CPI's SmartHub app, or your online account.

Stay away from downed power lines and DO NOT TOUCH them!

## **PAYMENT ASSISTANCE:**

If you are having problems paying your bill our partner organizations, Community Services Consortium, Mid-Willamette Valley Community Action and Lane County Human Services, might be able to help. They can help with rental and utility bill assistance. Please call, email or visit them online to learn if you can qualify. Please be sure to notify CPI for any payment arrangements.

### **For those in Benton, Lincoln and Linn counties:**

#### **Community Services Consortium**

Website: [www.communityservices.us](http://www.communityservices.us)

Email: [info@communityservices.us](mailto:info@communityservices.us)

Benton: 541-752-2840

Linn: 541-926-7163

Lincoln: 541-265-3293

### **For those in Marion and Polk counties:**

#### **Mid-Willamette Valley Community Action**

Website: [mwvcaa.org/programs/energy-services/](http://mwvcaa.org/programs/energy-services/)

Email: [info@mwvcaa.org](mailto:info@mwvcaa.org)

Phone: 503-585-6232

### **For those in Lane county:**

#### **Lane County Human Services**

Website: [www.lanecounty.org](http://www.lanecounty.org)

Email: [ENERGY@co.lane.or.us](mailto:ENERGY@co.lane.or.us)

Phone: 541-682-3378



**811** KNOW WHAT'S BELOW.  
CALL BEFORE YOU DIG.

### **Other Ways to Pay Your Bill**



#### **Online**

Pay your bill at  
[cpi.coop](http://cpi.coop)



#### **Phone**

Call 541-929-3124  
or 800-872-9036  
to speak with us



#### **Mobile App**

Download the SmartHub app  
on iTunes or Google Play Store



#### **In-Person**

6990 West Hills Rd  
Philomath, OR 97370

#### **Lebanon Office**

1900 Oak St  
Lebanon, OR 97355





CONSUMERS POWER INC.

Office Hours: Monday - Thursday 7:00 a.m. to 5:30 p.m.  
 Contact us: 541-929-3124 or 1-800-872-9036 Hours: 24/7  
[www.cpi.coop](http://www.cpi.coop)

**Member Name:** ALSEA RURAL HEALTH CENTER  
**Account #:** 5309701  
**Statement Date:** 05/02/2022

**TOTAL AMOUNT DUE**

# \$173.00

**DUE DATE 05/25/22**

**Member Monthly Message**

All this month, CPI joins with ESFI and electric utilities across the nation to celebrate National Electric Safety Month. ESFI's annual campaign includes electrical safety resources for organizations, schools, and families. We invite you to visit [esfi.org](http://esfi.org) to learn more.

<b>Previous Account Activity</b>	
Previous Balance	\$194.00
Payments Received - Thank You	-\$194.00
<b>Balance Before Current Charges</b>	<b>\$0.00</b>
<b>Account Balance</b>	<b>\$173.00</b>

**YTD Round Up Amount: \$2.96**

Rate Description: **GENERAL SERVICE**

Service Address: **435 E ALDER ST-MEDICAL FACILITY**

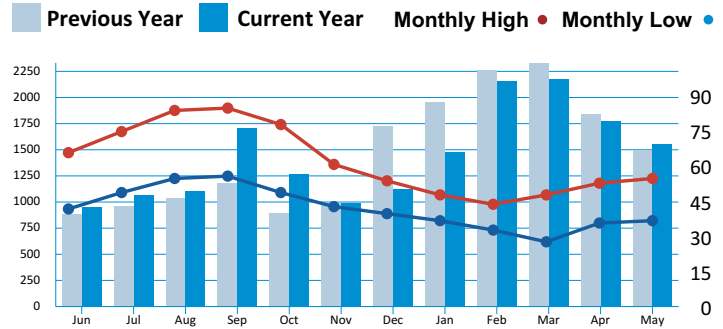
Meter #	Type	Days	Services		Readings		Metered Usage	Meter Multiplier	Rate
			From	To	Previous	Present			
18363	KWH	31	03/25/2022	04/25/2022	63703	65255	1552	1	006
18363	KW	31	03/25/2022	04/25/2022	0	17.971	17.971	1	006

**Current Activity**

Basic Service Charge	\$30.00
KWH Revenue	1,552 kWh @ .0920 \$142.78
Operation Round Up Amount	\$0.17
Low Income Assistance	\$0.05
<b>Total Current Activity</b>	<b>\$173.00</b>

**Usage History**

**Temp**



COMPARISONS	Days	kWh	Avg Temp	Avg kWh
Current Month	31	1552	47	50
Previous Month	28	1775	46	63
Same Last Year	31	1500	51	48

Avg Cost Per Day: \$5.57

**Any BALANCE FORWARD is subject to DISCONNECTION of services.**

Please return this stub with your payment. Please do not staple, paperclip, or tape.



CONSUMERS POWER INC.  
 P.O. BOX 1180  
 6990 WEST HILLS ROAD  
 PHILOMATH, OR 97370

**ACCOUNT #** 5309701  
**SERVICE ADDRESS:** 435 E ALDER ST-MEDICAL FACILITY

**Total Due: \$173.00**  
**Payment is due by 05/25/22**



**One-Time Operation Roundup Donation:**

\$ \_\_\_\_\_

1595 1 AB 0.461  
 ALSEA RURAL HEALTH CENTER  
 % BENTON CO HEALTH DEPT  
 360 SW AVERY AVE  
 CORVALLIS OR 97333-1139

5 1595  
 C-7

CONSUMERS POWER, INC.  
 PO BOX 1180  
 PHILOMATH OR 97370-1180



00000530970100000173005

## **DROP BOX LOCATIONS:**

**Philomath** - CPI Office

**Lebanon** - CPI Office

**Albany** - Postal Connections

**Alsea** - John Boy's Mercantile

## **POWER OUTAGES:**

Check your fuses and breakers to ensure the problem is not within your electrical system.

If you have determined there is an outage, report it by calling 541-929-3124, 1-800-872-9036, 24/7, by using CPI's SmartHub app, or your online account.

Stay away from downed power lines and DO NOT TOUCH them!

## **PAYMENT ASSISTANCE:**

If you are having problems paying your bill our partner organizations, Community Services Consortium, Mid-Willamette Valley Community Action and Lane County Human Services, might be able to help. They can help with rental and utility bill assistance. Please call, email or visit them online to learn if you can qualify. Please be sure to notify CPI for any payment arrangements.

### **For those in Benton, Lincoln and Linn counties:**

#### **Community Services Consortium**

Website: [www.communityservices.us](http://www.communityservices.us)

Email: [info@communityservices.us](mailto:info@communityservices.us)

Benton: 541-752-2840

Linn: 541-926-7163

Lincoln: 541-265-3293

### **For those in Marion and Polk counties:**

#### **Mid-Willamette Valley Community Action**

Website: [mwvcaa.org/programs/energy-services/](http://mwvcaa.org/programs/energy-services/)

Email: [info@mwvcaa.org](mailto:info@mwvcaa.org)

Phone: 503-585-6232

### **For those in Lane county:**

#### **Lane County Human Services**

Website: [www.lanecounty.org](http://www.lanecounty.org)

Email: [ENERGY@co.lane.or.us](mailto:ENERGY@co.lane.or.us)

Phone: 541-682-3378

**Observe Electrical Safety Month  
with us by making sure you look up,  
down and around before starting  
any house or yard projects.  
For more advice visit us online.**



## **Other Ways to Pay Your Bill**



### **Online**

Pay your bill at  
[cpi.coop](http://cpi.coop)



### **Phone**

Call 541-929-3124  
or 800-872-9036  
to speak with us



### **Mobile App**

Download the SmartHub app  
on iTunes or Google Play Store



### **In-Person**

6990 West Hills Rd  
Philomath, OR 97370

### **Lebanon Office**

1900 Oak St  
Lebanon, OR 97355



CONSUMERS POWER INC.

Office Hours: Monday - Thursday 7:00 a.m. to 5:30 p.m.  
 Contact us: 541-929-3124 or 1-800-872-9036 Hours: 24/7  
[www.cpi.coop](http://www.cpi.coop)

Member Name: **ALSEA RURAL HEALTH CENTER**  
 Account #: **5309701**  
 Statement Date: **06/01/2022**

**TOTAL AMOUNT DUE**

# \$138.00

**DUE DATE 06/25/22**

**Member Monthly Message**

Wildfire season is upon us. Creating a defensive space around your home, assembling an emergency kit, and developing an evacuation plan are just a few of the ways you can prepare. For more tips and information please visit [cpi.coop/safety/wildfire-safety](http://cpi.coop/safety/wildfire-safety)

**Previous Account Activity**

Previous Balance	\$173.00
Payments Received - Thank You	-\$173.00
<b>Balance Before Current Charges</b>	<b>\$0.00</b>
<b>Account Balance</b>	<b>\$138.00</b>

**YTD Round Up Amount: \$3.64**

Rate Description: **GENERAL SERVICE**

Service Address: **435 E ALDER ST-MEDICAL FACILITY**

Meter #	Type	Days	Services		Readings		Metered Usage	Meter Multiplier	Rate
			From	To	Previous	Present			
18363	KWH	30	04/25/2022	05/25/2022	65255	66421	1166	1	006
18363	KW	30	04/25/2022	05/25/2022	0	16.032	16.032	1	006

**Current Activity**

Basic Service Charge	\$30.00
KWH Revenue	1,166 kWh @ .0920 \$107.27
Operation Round Up Amount	\$0.68
Low Income Assistance	\$0.05
<b>Total Current Activity</b>	<b>\$138.00</b>

**Any BALANCE FORWARD is subject to DISCONNECTION of services.**

**Usage History**

■ Previous Year ■ Current Year ● Monthly High ● Monthly Low

COMPARISONS	Days	kWh	Avg Temp	Avg kWh
Current Month	30	1166	52	39
Previous Month	31	1552	47	50
Same Last Year	29	955	55	33

Avg Cost Per Day: \$4.58

Please return this stub with your payment. Please do not staple, paperclip, or tape.



CONSUMERS POWER INC.  
 P.O. BOX 1180  
 6990 WEST HILLS ROAD  
 PHILOMATH, OR 97370

**ACCOUNT # 5309701**  
**SERVICE ADDRESS: 435 E ALDER ST-MEDICAL FACILITY**

**Total Due: \$138.00**  
**Payment is due by 06/25/22**



**One-Time Operation Roundup Donation:**  
 \$ \_\_\_\_\_

1587 1 AB 0.461  
 ALSEA RURAL HEALTH CENTER  
 % BENTON CO HEALTH DEPT  
 360 SW AVERY AVE  
 CORVALLIS OR 97333-1139

5 1587  
 C-5

CONSUMERS POWER, INC.  
 PO BOX 1180  
 PHILOMATH OR 97370-1180



00000530970100000138008

## **DROP BOX LOCATIONS:**

**Philomath** - CPI Office

**Lebanon** - CPI Office

**Albany** - Postal Connections

**Alsea** - John Boy's Mercantile

## **POWER OUTAGES:**

Check your fuses and breakers to ensure the problem is not within your electrical system.

If you have determined there is an outage, report it by calling 541-929-3124, 1-800-872-9036, 24/7, by using CPI's SmartHub app, or your online account.

Stay away from downed power lines and DO NOT TOUCH them!

## **PAYMENT ASSISTANCE:**

If you are having problems paying your bill our partner organizations, Community Services Consortium, Mid-Willamette Valley Community Action and Lane County Human Services, might be able to help. They can help with rental and utility bill assistance. Please call, email or visit them online to learn if you can qualify. Please be sure to notify CPI for any payment arrangements.

### **For those in Benton, Lincoln and Linn counties:**

#### **Community Services Consortium**

Website: [www.communityservices.us](http://www.communityservices.us)

Email: [info@communityservices.us](mailto:info@communityservices.us)

Benton: 541-752-2840

Linn: 541-926-7163

Lincoln: 541-265-3293

### **For those in Marion and Polk counties:**

#### **Mid-Willamette Valley Community Action**

Website: [mwvcaa.org/programs/energy-services/](http://mwvcaa.org/programs/energy-services/)

Email: [info@mwvcaa.org](mailto:info@mwvcaa.org)

Phone: 503-585-6232

### **For those in Lane county:**

#### **Lane County Human Services**

Website: [www.lanecounty.org](http://www.lanecounty.org)

Email: [ENERGY@co.lane.or.us](mailto:ENERGY@co.lane.or.us)

Phone: 541-682-3378



**CPI is committed to keeping you safe during wildfire season.**

Learn about **Public Safety Power Shutoff** at [cpi.coop/safety](http://cpi.coop/safety)



## **Other Ways to Pay Your Bill**



### **Online**

Pay your bill at [cpi.coop](http://cpi.coop)



### **Phone**

Call 541-929-3124 or 800-872-9036 to speak with us



### **Mobile App**

Download the SmartHub app on iTunes or Google Play Store



### **In-Person**

6990 West Hills Rd  
Philomath, OR 97370

### **Lebanon Office**

1900 Oak St  
Lebanon, OR 97355



CONSUMERS POWER INC.

Office Hours: Monday - Thursday 7:00 a.m. to 5:30 p.m.  
 Contact us: 541-929-3124 or 1-800-872-9036 Hours: 24/7  
[www.cpi.coop](http://www.cpi.coop)

Member Name: **ALSEA RURAL HEALTH CENTER**  
 Account #: **5309701**  
 Statement Date: **07/05/2022**

**TOTAL AMOUNT DUE**

# \$129.00

**DUE DATE 07/25/22**

**Member Monthly Message**

If you are working on a home improvement project this summer be sure to visit us online to see if you qualify for a energy efficiency rebate. CPI offers rebates on everything from new windows to heat pumps and and water heaters. [www.cpi.coop/rebates](http://www.cpi.coop/rebates)

Previous Account Activity	
Previous Balance	\$138.00
Payments Received - Thank You	-\$138.00
<b>Balance Before Current Charges</b>	<b>\$0.00</b>
<b>Account Balance</b>	<b>\$129.00</b>

**YTD Round Up Amount: \$4.06**

Rate Description: **GENERAL SERVICE**

Service Address: **435 E ALDER ST-MEDICAL FACILITY**

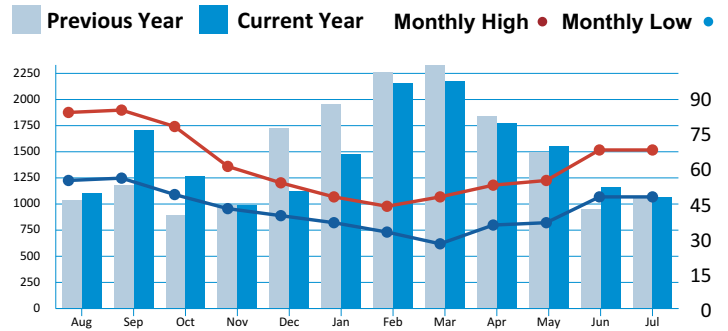
Meter #	Type	Days	Services		Readings		Metered Usage	Meter Multiplier	Rate
			From	To	Previous	Present			
18363	KWH	31	05/25/2022	06/25/2022	66421	67492	1071	1	006
18363	KW	31	05/25/2022	06/25/2022	0	13.209	13.209	1	006

**Current Activity**

Basic Service Charge	\$30.00
KWH Revenue	1,071 kWh @ .0920 \$98.53
Operation Round Up Amount	\$0.42
Low Income Assistance	\$0.05
<b>Total Current Activity</b>	<b>\$129.00</b>

**Usage History**

**Temp**



COMPARISONS	Days	kWh	Avg Temp	Avg kWh
Current Month	31	1071	59	35
Previous Month	30	1166	59	39
Same Last Year	32	1068	63	33

Avg Cost Per Day: \$4.15

**Any BALANCE FORWARD is subject to DISCONNECTION of services.**

Please return this stub with your payment. Please do not staple, paperclip, or tape.



CONSUMERS POWER INC.  
 P.O. BOX 1180  
 6990 WEST HILLS ROAD  
 PHILOMATH, OR 97370

**ACCOUNT # 5309701**  
**SERVICE ADDRESS: 435 E ALDER ST-MEDICAL FACILITY**

**Total Due: \$129.00**  
**Payment is due by 07/25/22**



**One-Time Operation Roundup Donation:**

\$ \_\_\_\_\_

1604 1 AB 0.461  
 ALSEA RURAL HEALTH CENTER  
 % BENTON CO HEALTH DEPT  
 360 SW AVERY AVE  
 CORVALLIS OR 97333-1139

5 1604  
 C-5

CONSUMERS POWER, INC.  
 PO BOX 1180  
 PHILOMATH OR 97370-1180



00000530970100000129007

## **DROP BOX LOCATIONS:**

**Philomath** - CPI Office

**Lebanon** - CPI Office

**Albany** - Postal Connections

**Alsea** - John Boy's Mercantile

## **POWER OUTAGES:**

Check your fuses and breakers to ensure the problem is not within your electrical system.

If you have determined there is an outage, report it by calling 541-929-3124, 1-800-872-9036, 24/7, by using CPI's SmartHub app, or your online account.

Stay away from downed power lines and DO NOT TOUCH them!

## **PAYMENT ASSISTANCE:**

If you are having problems paying your bill our partner organizations, Community Services Consortium, Mid-Willamette Valley Community Action and Lane County Human Services, might be able to help. They can help with rental and utility bill assistance. Please call, email or visit them online to learn if you can qualify. Please be sure to notify CPI for any payment arrangements.

### **For those in Benton, Lincoln and Linn counties:**

#### **Community Services Consortium**

Website: [www.communityservices.us](http://www.communityservices.us)

Email: [info@communityservices.us](mailto:info@communityservices.us)

Benton: 541-752-2840

Linn: 541-926-7163

Lincoln: 541-265-3293

### **For those in Marion and Polk counties:**

#### **Mid-Willamette Valley Community Action**

Website: [mwvcaa.org/programs/energy-services/](http://mwvcaa.org/programs/energy-services/)

Email: [info@mwvcaa.org](mailto:info@mwvcaa.org)

Phone: 503-585-6232

### **For those in Lane county:**

#### **Lane County Human Services**

Website: [www.lanecounty.org](http://www.lanecounty.org)

Email: [ENERGY@co.lane.or.us](mailto:ENERGY@co.lane.or.us)

Phone: 541-682-3378

**SHARE PEAK WITH A FRIEND AND SHARE IN THE SAVINGS!**

-  YOU GET A **FREE MONTH OF SERVICE**
-  THEY GET A **FREE MONTH OF SERVICE**

VISIT [PEAKINTERNET.COM/RAF](http://PEAKINTERNET.COM/RAF) TO REFER A FRIEND

**PEAK**  
INTERNET

## **Other Ways to Pay Your Bill**



### **Online**

Pay your bill at [cpi.coop](http://cpi.coop)



### **Phone**

Call 541-929-3124 or 800-872-9036 to speak with us



### **Mobile App**

Download the SmartHub app on iTunes or Google Play Store



### **In-Person**

6990 West Hills Rd  
Philomath, OR 97370

### **Lebanon Office**

1900 Oak St  
Lebanon, OR 97355