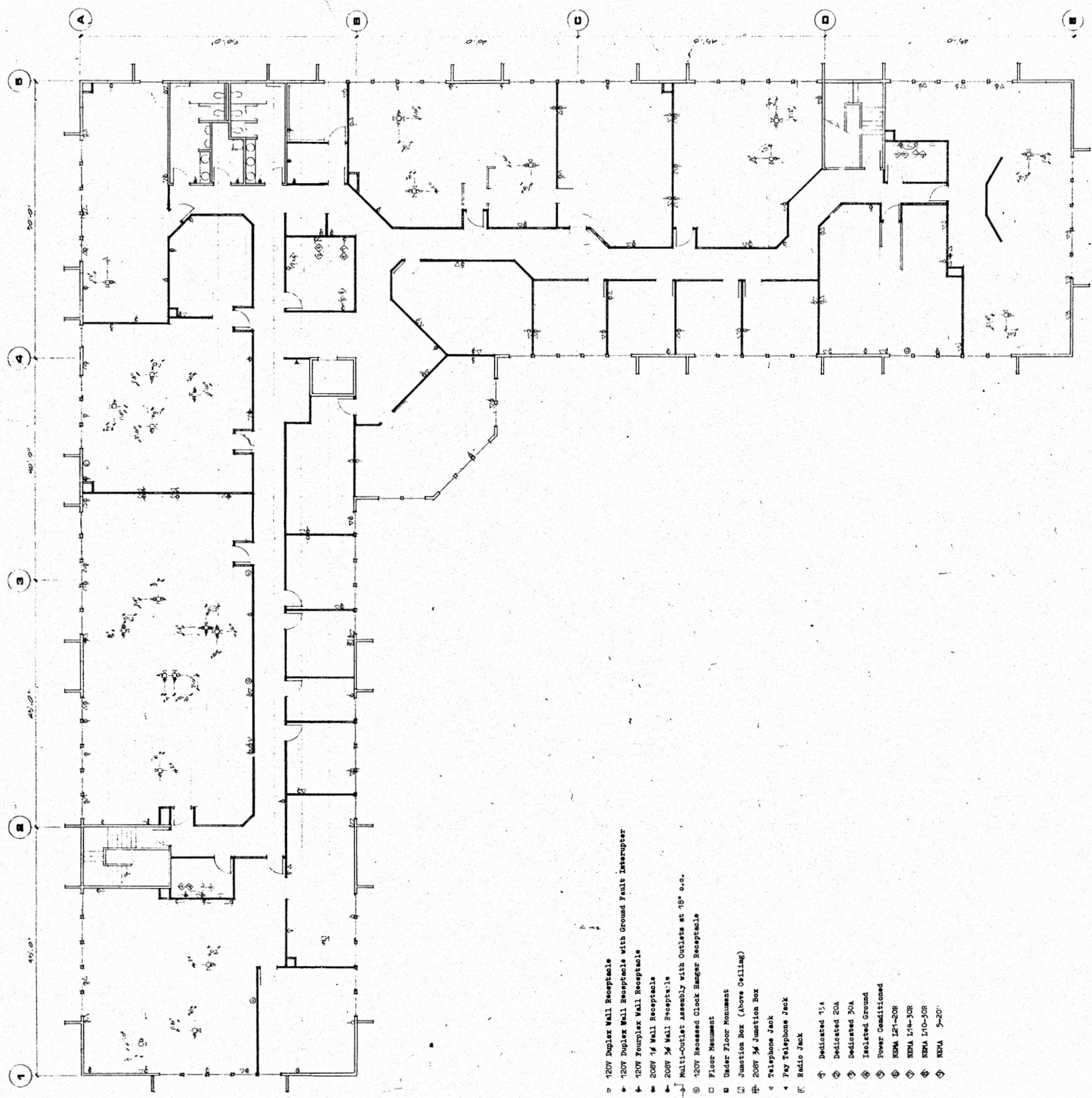




RAYMOND J. BARTEL A.I.A.
 ARCHITECT & PLANNER
 8075 S.E. HARRISON ST. MILWAUKEE, OREGON 97138-3888
 503/253-1111

UPPER LEVEL ELECTRICAL
 CORVALLIS, OREGON
U. S. FOREST SERVICE
 BUREAU SUPERVISOR'S OFFICE

A 9



APPROVED
 DATE 5/1/84
 SUPERVISOR'S OFFICE
 U.S. FOREST SERVICE
 CORVALLIS, OREGON

Permit
 4844
 6790
 6808
 5446

- ▷ 120V Duplex Wall Receptacle
- ◀ 120V Duplex Wall Receptacle with Ground Fault Interrupter
- ▶ 120V Fourplex Wall Receptacle
- ◀ 208V 3/4 Wall Receptacle
- ▶ 208V 3/4 Wall Receptacle
- ◀ Multi-Outlet Assembly with Outlets at 18" o.c.
- ⊙ 120V Recessed Clock Ringer Receptacle
- Floor Mount
- Under Floor Mount
- ⊞ Junction Box (Above Ceiling)
- ⊞ 208V 3/4 Junction Box
- Telephone Jack
- Pay Telephone Jack
- ⊞ Radio Jack
- ⊞ Dedicated 15A
- ⊞ Dedicated 20A
- ⊞ Dedicated 30A
- ⊞ Isolated Ground
- ⊞ Power Conditioned
- ⊞ NEMA 1P-1-COR
- ⊞ NEMA 1P-1-20R
- ⊞ NEMA 1P-0-20R
- ⊞ NEMA 5-20"