

0455-2



FACILITIES SERVICES

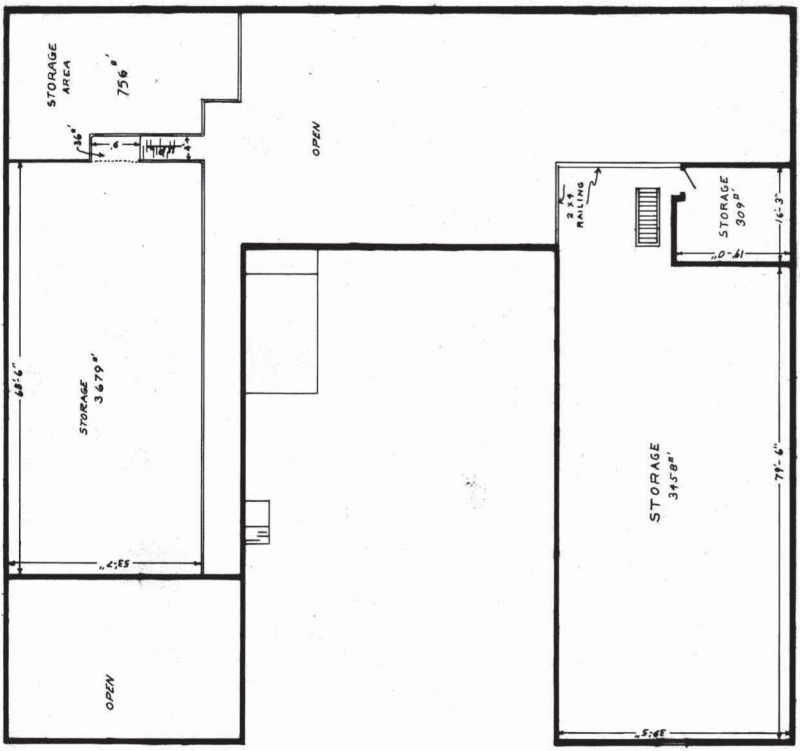
ADAMS HALL
1015 15th STREET
CORVALLIS, OREGON
97331-7001
(503)737-4921

OREGON STATE UNIVERSITY

HYSLOP FARM RESEARCH LAB

SECOND FLOOR

SO. FL. AREAS	
BUILDING NO. 0455	
GROSS 12,840	
NET USABLE 8,238	
NET ASSIGN.	
NET UNASSIGN.	
DATE: DWG. JAN 71	SHEET NO. 2
DATE: REV. REVISION	BR/PLU



OREGON STATE UNIVERSITY
HYSLOP FARM
FIELD RESEARCH LAB.
SECOND FLOOR
SCALE 1/16"=1'-0"
BLG. NO. 455
JAN 1971

Useable Sq Ft. 8,238
Gross Sq Ft. 12,840
NO CEILING