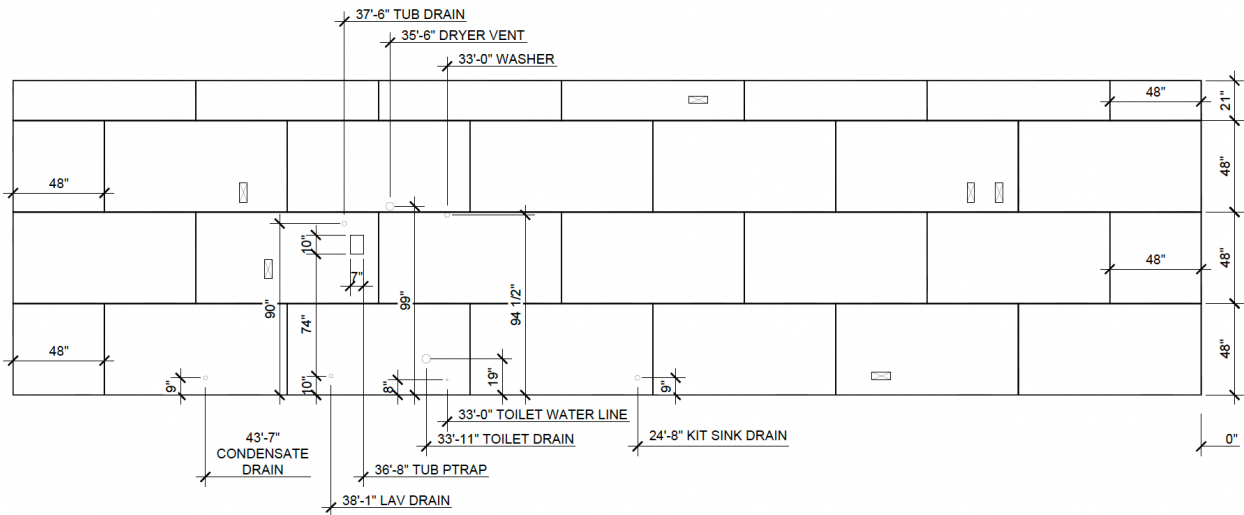
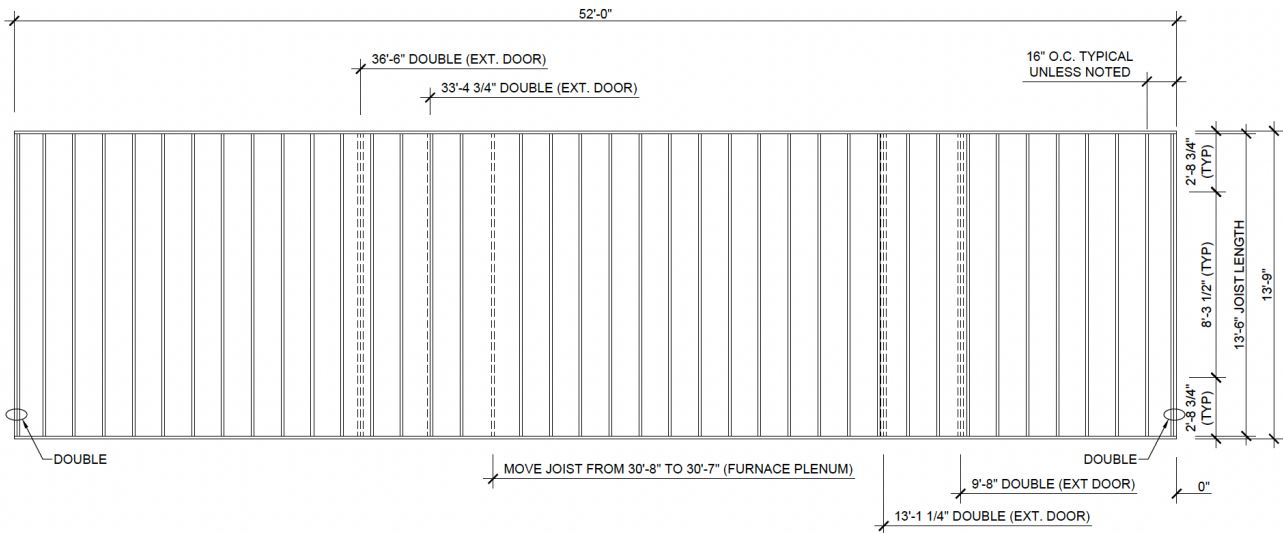


Floor Decking and estimations

In this activity, you will be finding the amount of decking material and the needed number of screws needed to attach the floor decking.



Using the diagram above for the floor plan, determine the total number of 4 ft by 8 ft sheets of decking that will be required for one home.



Given the above framing for the floor with the decking materials from other diagram, find the approximate number of screws needed to attach the decking. Screws are placed every 6 inches along edge of sheets and every 12 inches in the center of each sheet.  
Would the amount of decking needed change if the 4 ft by 8 ft sheets are tongue and groove sheets?